



A's Ballpark Update

May 19, 2026

The information in this presentation is proprietary and confidential.



Agenda

1 Executive Summary

2 Schedule Milestones

3 Progress Photos

4 Outside-the-Ballpark Update

5 SLB Participation / Workforce Diversity

6 Community Engagement

7 Sales Update





Executive Summary

Construction Update

- Lower Suite Level (Level 200) and Main Concourse (Level 300) elevated decks completed
- All buttress work completed
- Primary and bowl steel erection began in March and continues to progress from the south moving northeast and northwest
- LR 11000 (inner bowl crane) and MLC 650 (east exterior crane) cranes assembled onsite to support roof truss erection
- CT45 (eastern-most) roof truss steel assembly and detailing
- Shoring towers assembled and being erected to support roof truss installation
- Shallow underground utilities installing on Level 100, followed by slab on grade concrete
- Level 200 priority wall framing, MEP rough-in and installation
- Six escalators staged onsite for future install

Project Coordination

- MEP coordination continues for upper levels of the ballpark
- Permit packages approved by Clark County
- Escalators continue to arrive and be assembled offsite
- Precast upper concourse and upper deck stadia casting continues offsite
- Steel fabrication continues
- Design coordination ongoing

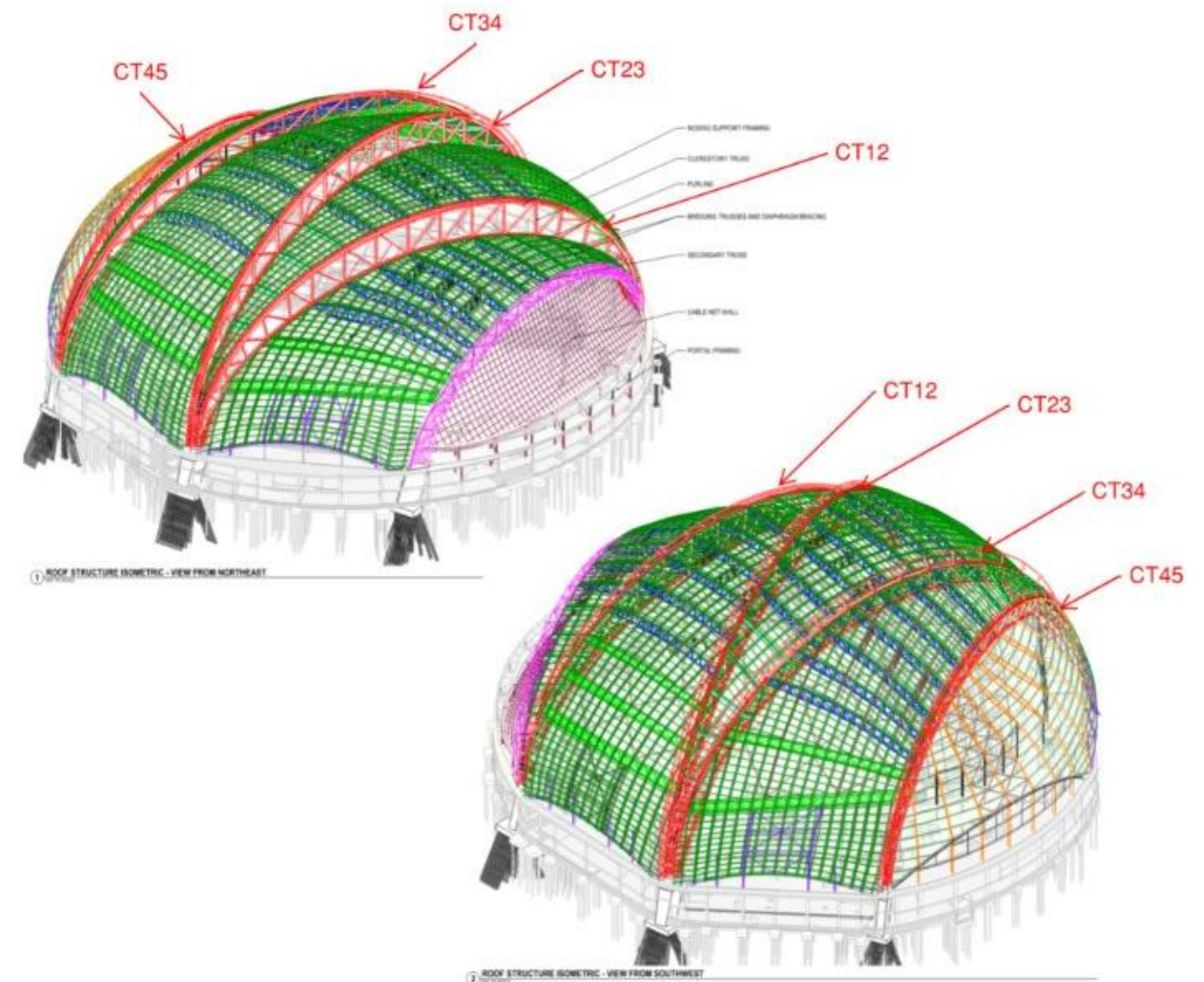


Schedule Milestones

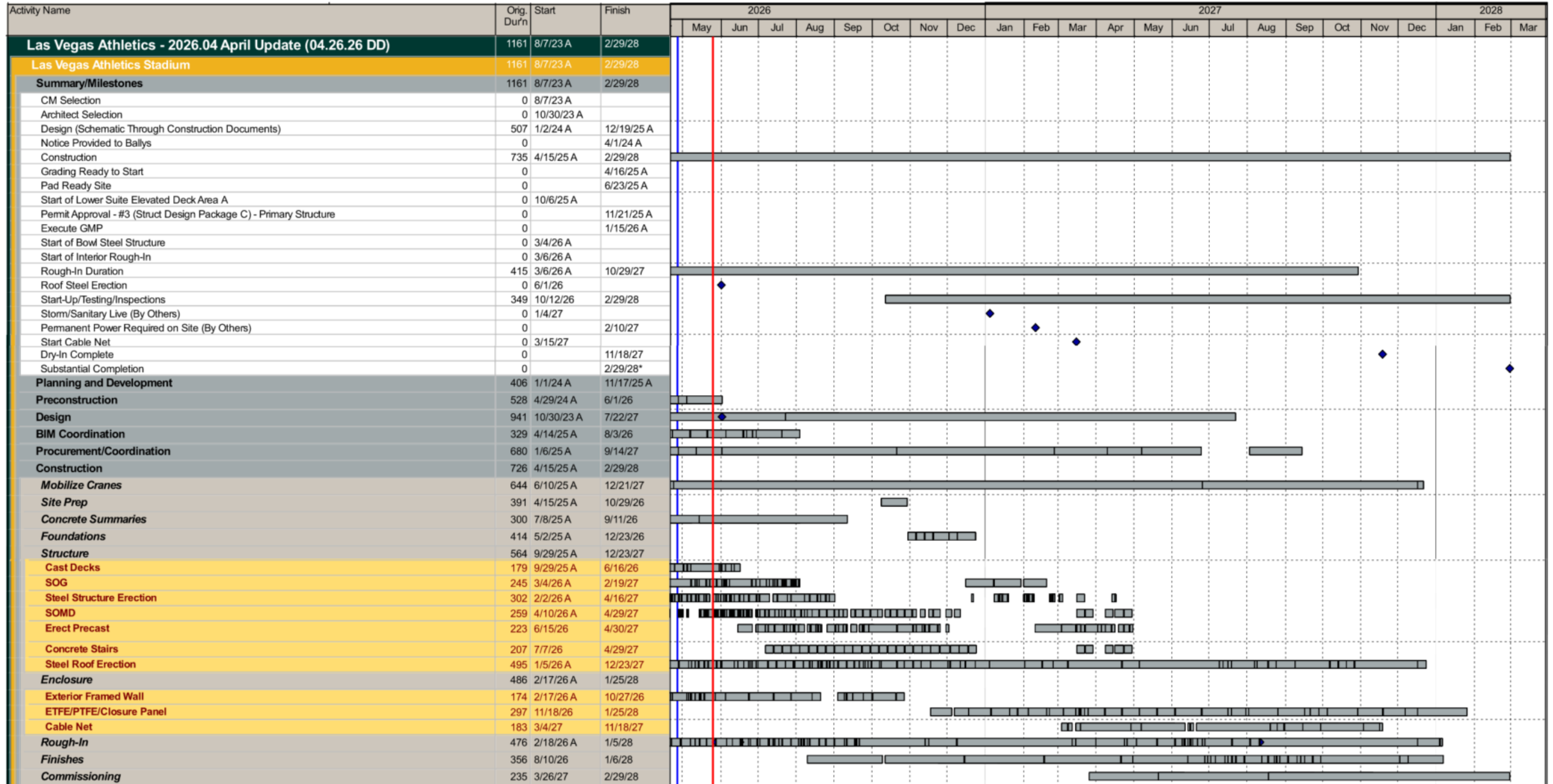
Upcoming Schedule Milestones

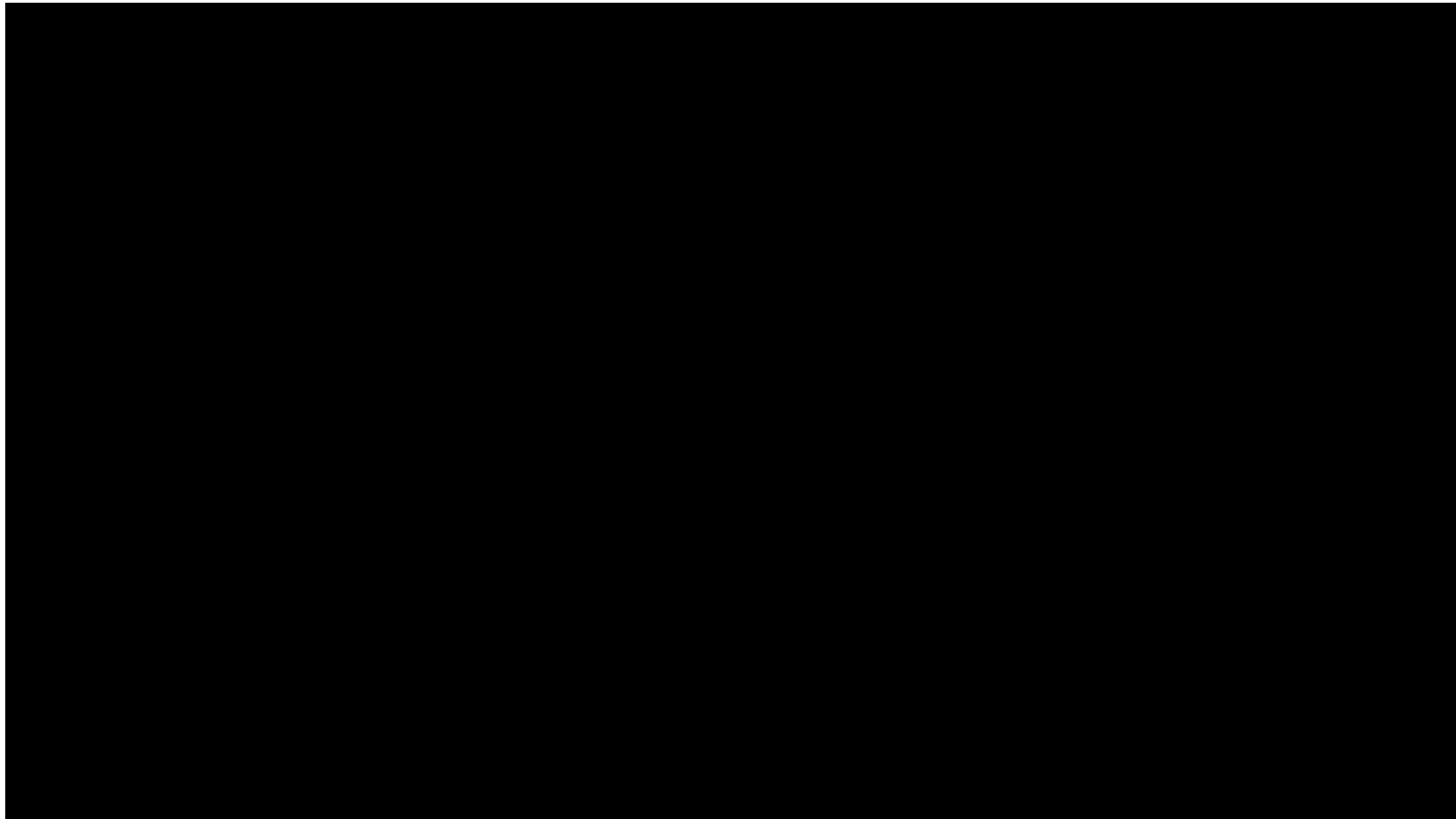
May 2026 - August 2026

- Shoring towers for CT45, CT34, and CT23 will be erected to support roof steel
- Second MLC 650 crane (west exterior crane) arrival onsite to support roof erection
- Roof steel trusses CT45, CT34, and CT23 erection
- Roof steel truss CT12 onsite assembly
- Infill steel erection at Roof Pennant 4
- Construction activities in the next **four months:**
 - Bowl and perimeter steel structure erection
 - Interior masonry on service level (Level 100)
 - Precast stadia erection at Main Concourse, Upper Suites, Upper Concourse and Upper Deck
 - MEP underground, rough-in and overhead
 - Interior framing and rough-in
 - Drywall hanging on Levels 100, 200, and 300
 - Slab on metal deck
 - Slab on grade at Service Level



Project Timeline

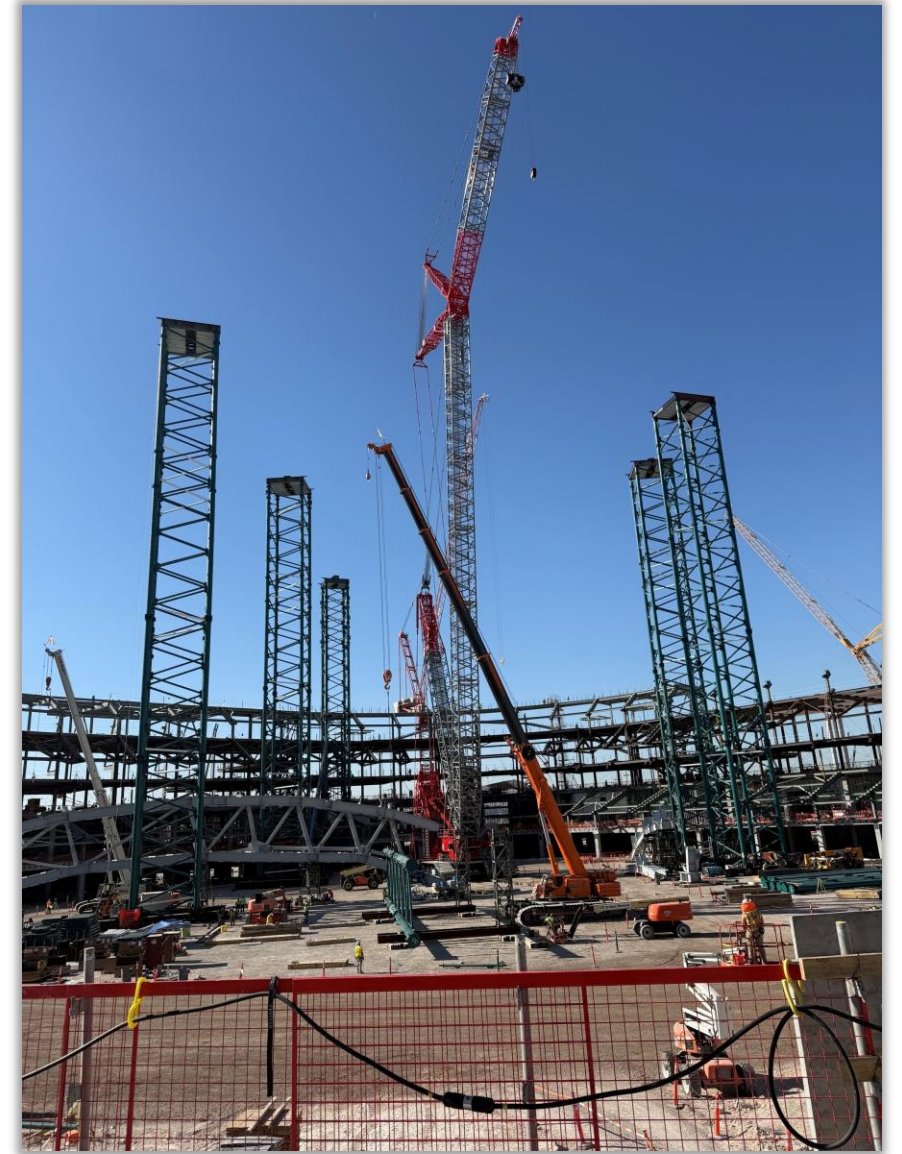




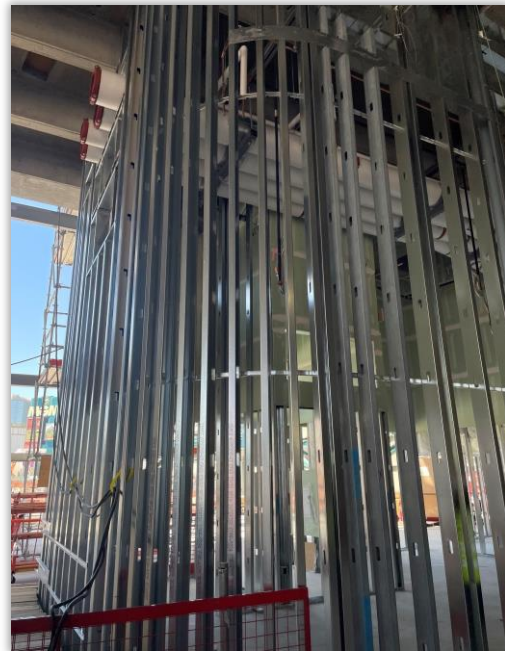
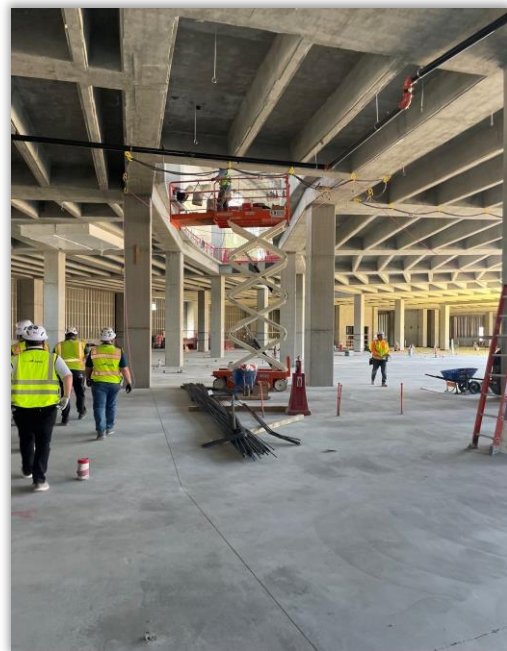
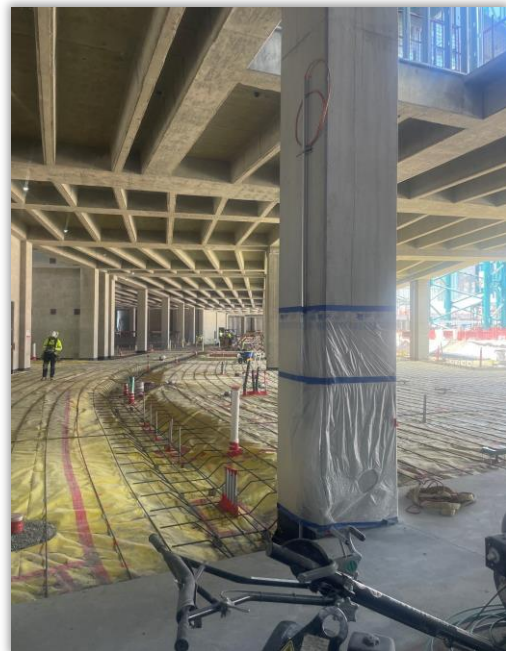
Progress Photos







Progress Photos (4 of 5)





February 2026

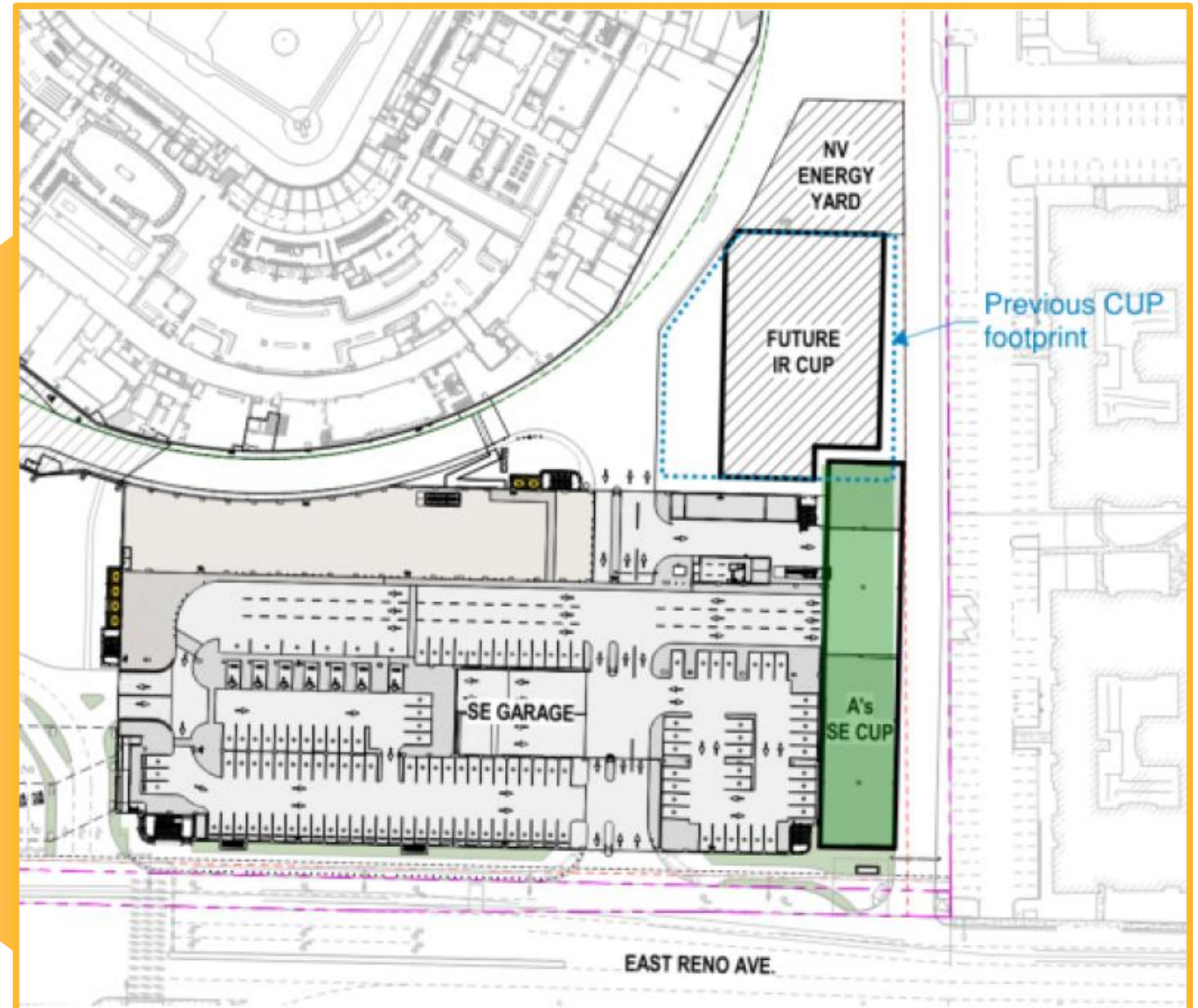
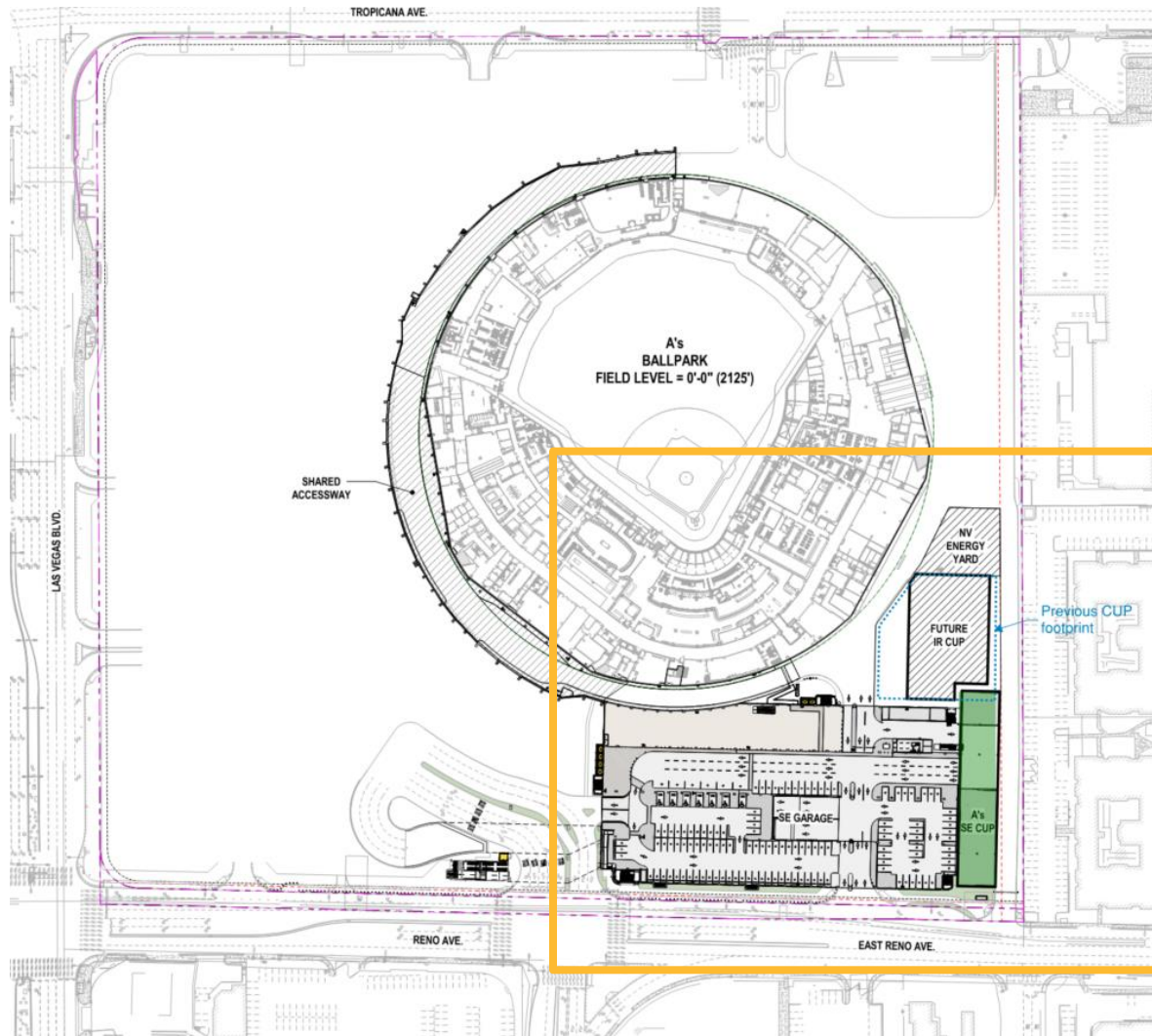


May 2026

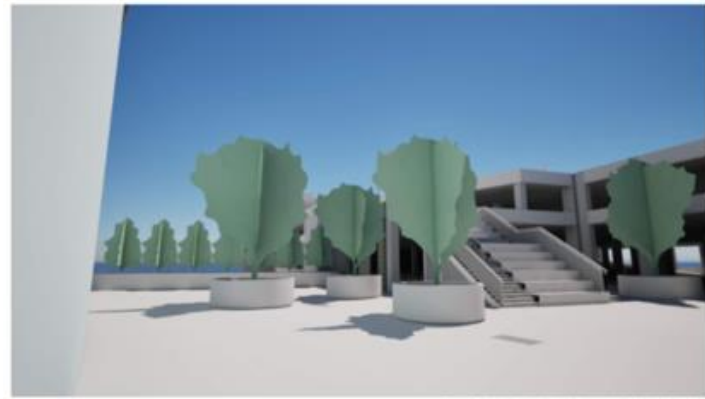


Outside-the-Ballpark

CUP Footprint: Before & After



Garage Renderings: 1,500 Stalls (Phase 1)



BALLPARK ENTRANCE - MAIN CONCOURSE

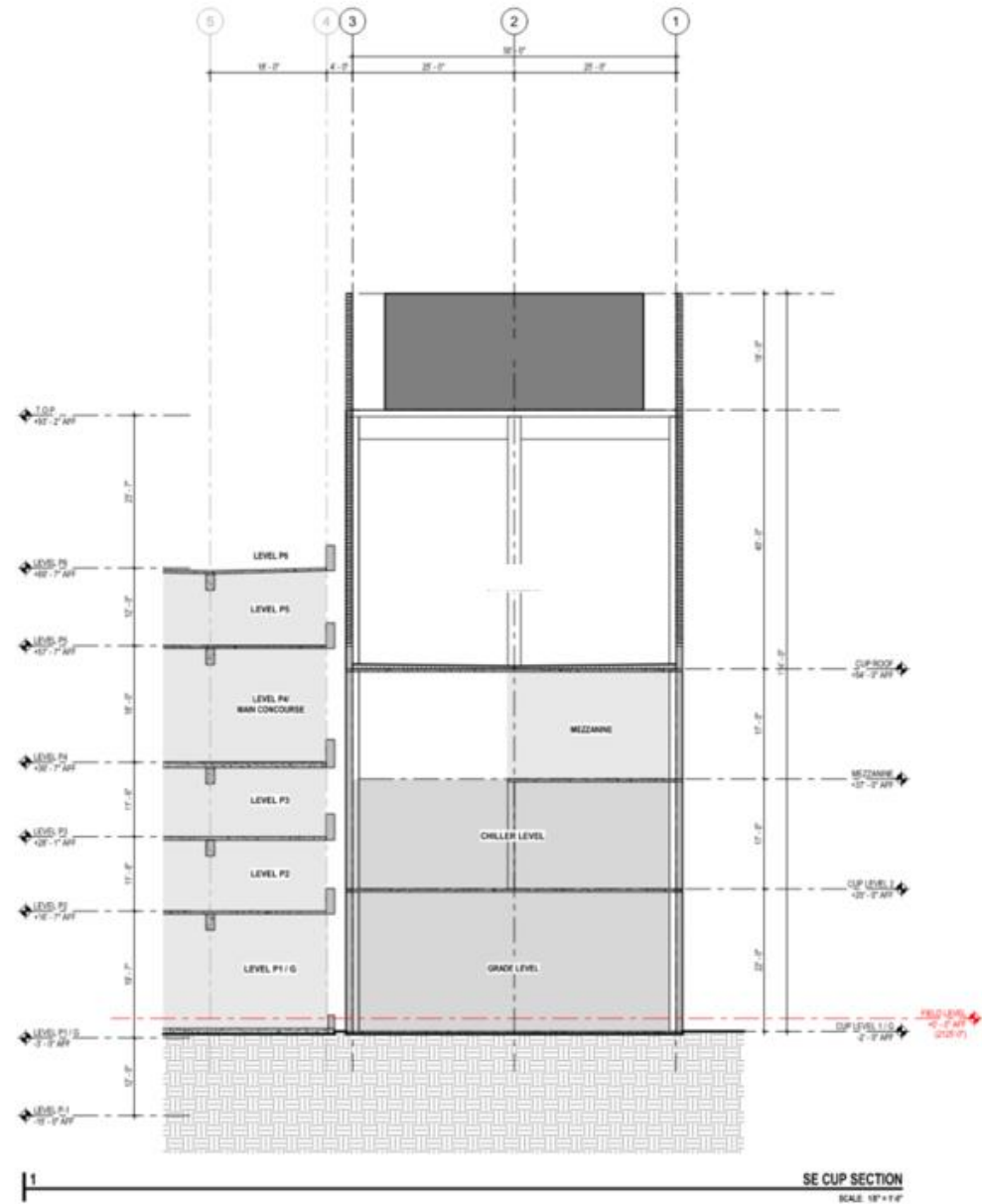


SE PERSPECTIVE - AERIAL

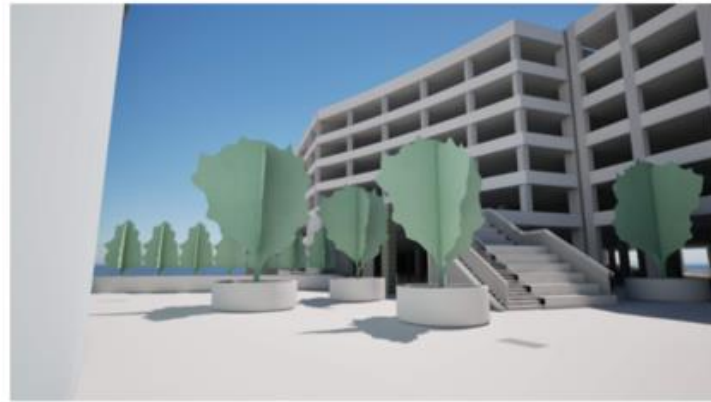


SE PERSPECTIVE - GROUND

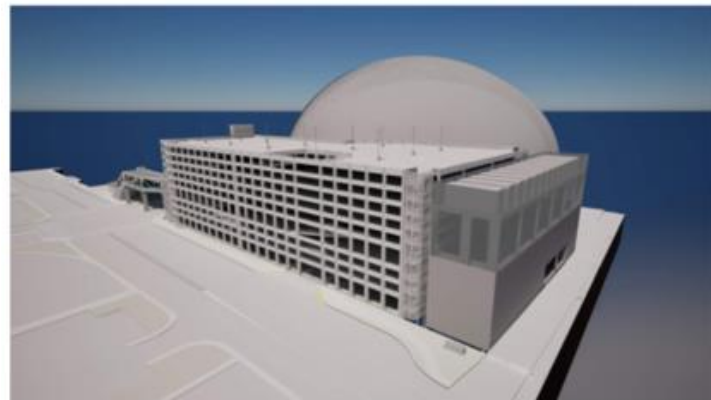
1500 stalls - P1 through P6



Garage Renderings: 2,500 Stalls (Final)



BALLPARK ENTRANCE - MAIN CONCOURSE

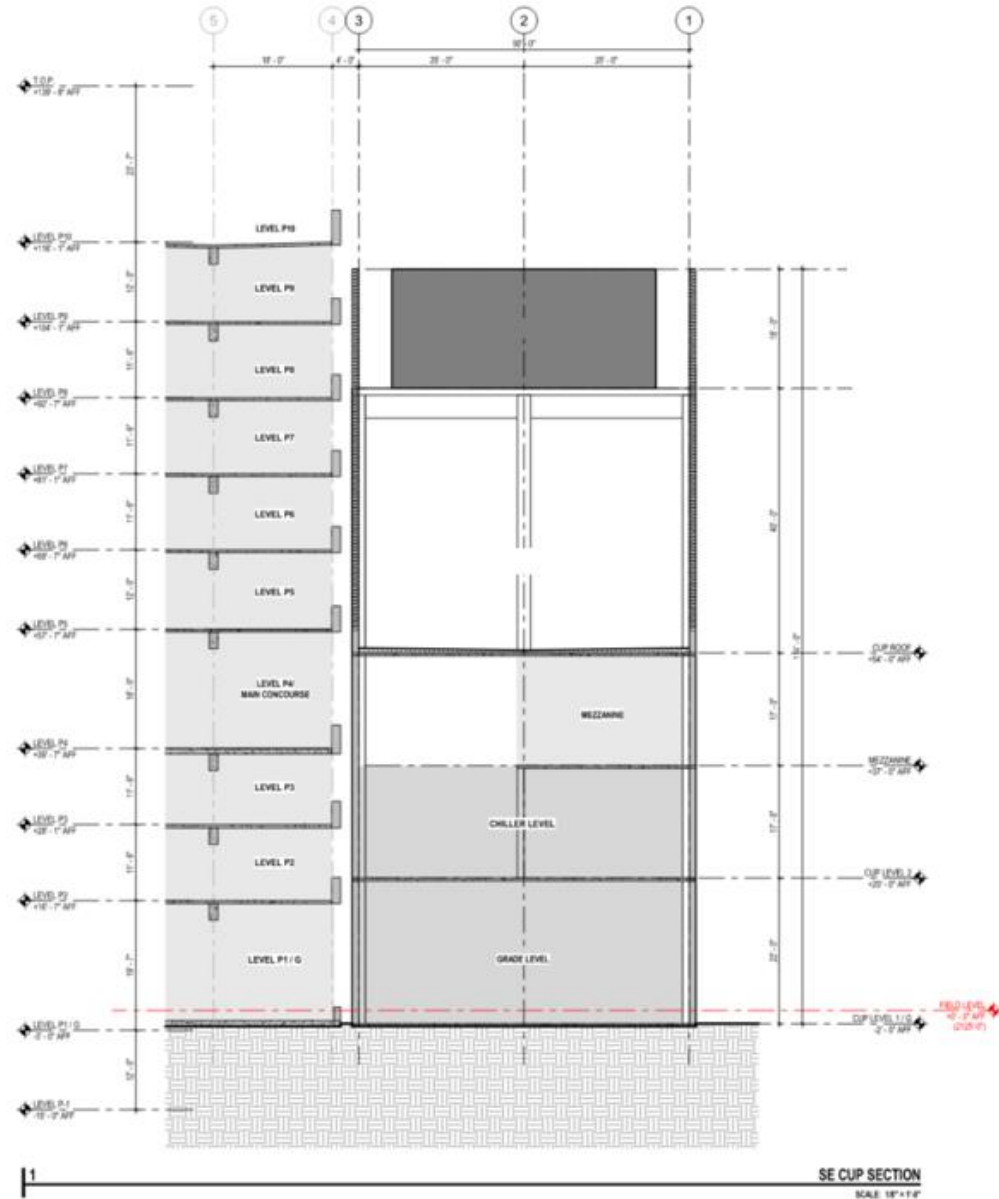


SE PERSPECTIVE - AERIAL



SE PERSPECTIVE - GROUND

2500 stalls - P1 through P10



SE CUP SECTION
SCALE 1/8"=1'-0"

SLB Participation / Workforce Diversity

SLB Participation

15%

Participation Goal

15.08%

Current Commitments

\$1.03B

Total Awarded
\$155.3M to SLB firms
\$89.7M to Diverse Firms

100+

NV-based Businesses
Committed

Workforce Diversity

51%

Targeted Worker Goal

78%

Current Targeted Worker Participation



Community Engagement

COMMUNITY AREAS OF FOCUS

Investment

Nonprofits, youth baseball & softball

Activations

Community outreach, civic engagement

Engagement

Fundraisers, partnerships, appearances

Integration

Civic leaders, boards, chambers

KEY METRICS

January - March 2026

104 Community appearances & events supported

67 Organizations engaged

5 Civic/community stakeholder tours hosted

56 Current A's & Legends employees based in Las Vegas



Q1 Community, Education & Civic Organizations Engaged (non-exhaustive list)





Experience Center Tours

- Engages civic leaders, nonprofits, educators, and business groups
- Showcases long-term vision and community impact

Ballpark Hard Hat Tours

- Grants early access for policymakers, civic, and business leaders
- Delivers firsthand view of development and impact

Q1 Signature Moments

- Big League Weekend / Big League Weekend Bash
- Little League Take the Field & Opening Day
- Community Suite with civic leaders
- Pitch, Hit & Run
- Experience Center Open House

Upcoming Events

Las Vegas Series (June 8-14)

- Youth & Education: Reading events, Boys & Girls Club engagement, educator recognition
- Service & Community Care: Volunteerism and hospital visits
- Military & First Responders: Ticket access and community engagement opportunities
- In-Game Integration: Nonprofit recognition and youth on-field experiences

Educator Engagement

- Teacher Appreciation Week partnership with CCSD & Fox 5
- Educator recognition and community investment





Sales Update



On-sale for select premium products



Public on-sale for season tickets



Dec 2025

Mar 2026

Jun 2026

A's Experience Center Opening



A's Las Vegas Series + on-sale for additional seat products



Thank You