

MEMORANDUM

Denis Cederburg
Director

Department of Public Works

TO: KEN DIAZ, COUNTY TREASURER

FROM: BRIDGET RUSSO, SID COORDINATOR



SUBJECT: SID NO. 121 – Southern Highlands

DATE: March 12, 2024

On November 30, 1999, Ordinance No. 2397 levying assessments for Special Improvement District No. 121 became effective. Amending Assessment Ordinance No. 3385 became effective May 2, 2006. A second Amending Assessment Ordinance No. 3748 became effective March 17, 2009. According to NRS 271.425, the County has the authority to apportion any uncollected amounts upon land divided in an equitable manner.

The reapportionments described will not increase the principal balance of any assessment to an amount such that the aggregate amount which is assessed against a tract exceeds the minimum benefit to the tract that is estimated to result from the Project which is financed by the assessment.

Please see attached spreadsheet for Reapportionment No. 130.

BAR

SID 121
District 7586 - Clark County Imp Dist No. 121
REAPPORTIONMENT NO 130

| | | ACRES | | | |
|----------------|----------|------------|---------------------|-------------|--|
| PREVIOUS APN | ASSESSED | UNASSESSED | ORIGINAL ASSESSMENT | DESCRIPTION | |
| 191-06-701-006 | 150.11 | | \$ 2,418,922.26 | PARCEL | |
| 191-06-411-001 | | 0.76 | N/A ⁽¹⁾ | LOT | |
| PREVIOUS APN | 150.11 | 0.76 | \$ 2,418,922.26 | | |
| TOTAL ACERAGE | 150.87 | | | | |

| | | ACRES | | | |
|-------------------------------|----------|------------|-----------------|-------------|--|
| NEW APN | ASSESSED | UNASSESSED | ASSESSMENT | DESCRIPTION | |
| 191-06-701-009 | 149.80 | | \$ 2,413,926.82 | PARCEL | |
| 191-06-401-010 ⁽²⁾ | 0.31 | 0.76 | \$ 4,995.44 | LOT | |
| APN TOTAL | 150.11 | 0.76 | \$ 2,418,922.26 | | |
| TOTAL | 150.87 | | | | |

Treasurer Notes:

Additional background and reference supporting SID 121 Reapportionment #130

Previous APN (191-06-701-006) as a result of SID 121 Reapportionment #111 1/17/2017

Previous APN (191-06-411-001) as a result of SID 121 Reapportionment #2 1/2/2001

⁽¹⁾ 191-06-411-001 Previously within SID 121/7524 - Assessment paid in full.

⁽²⁾ 0.31 Acre portion of 191-06-701-006 mapped to 191-06-401-010

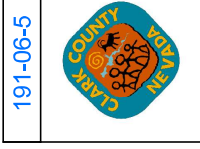
Per Assessment Ordinance No.2397 Section 6 (a) Should any lot, tract or parcel of land within the District be divided after the effective date of this Ordinance and before the collection of all the assessment installments, the Board may require the County Treasurer to apportion the uncollected amounts upon the several parts of land so divided on a net assessable area basis unless such land is divided into single-family residential lots, in which case the uncollected amounts will be divided on a per lot basis; provided that the applicant, at the time of such apportionment, may request that the: uncollected amounts be apportioned on a net area basis (rather than on a per lot basis). The County may consider such request and, in its sole discretion, apportion the uncollected assessments accordingly.

For purposes of such apportionment, the term "net assessable area" shall exclude (i) areas excluded from the definition of "assessable property" pursuant to NRS 271.040, (ii) areas designated on the assessment plat as being areas of non-assessment, and (iii) properties which are conveyed with restrictions limiting the uses of such properties to common areas, parks, landscaped areas and other permanent open space.

ASSESSOR'S PARCELS - CLARK COUNTY, NV.
 Briana Johnson - Assessor

723S R61E
 6
 191-06-5

| MA | 4 | 8 | 4 |
|----|---|---|---|
| 5 | 1 | 5 | 1 |
| 6 | 2 | 6 | 2 |
| 7 | 3 | 7 | 3 |
| 8 | 4 | 8 | 4 |
| 5 | 1 | 5 | 1 |

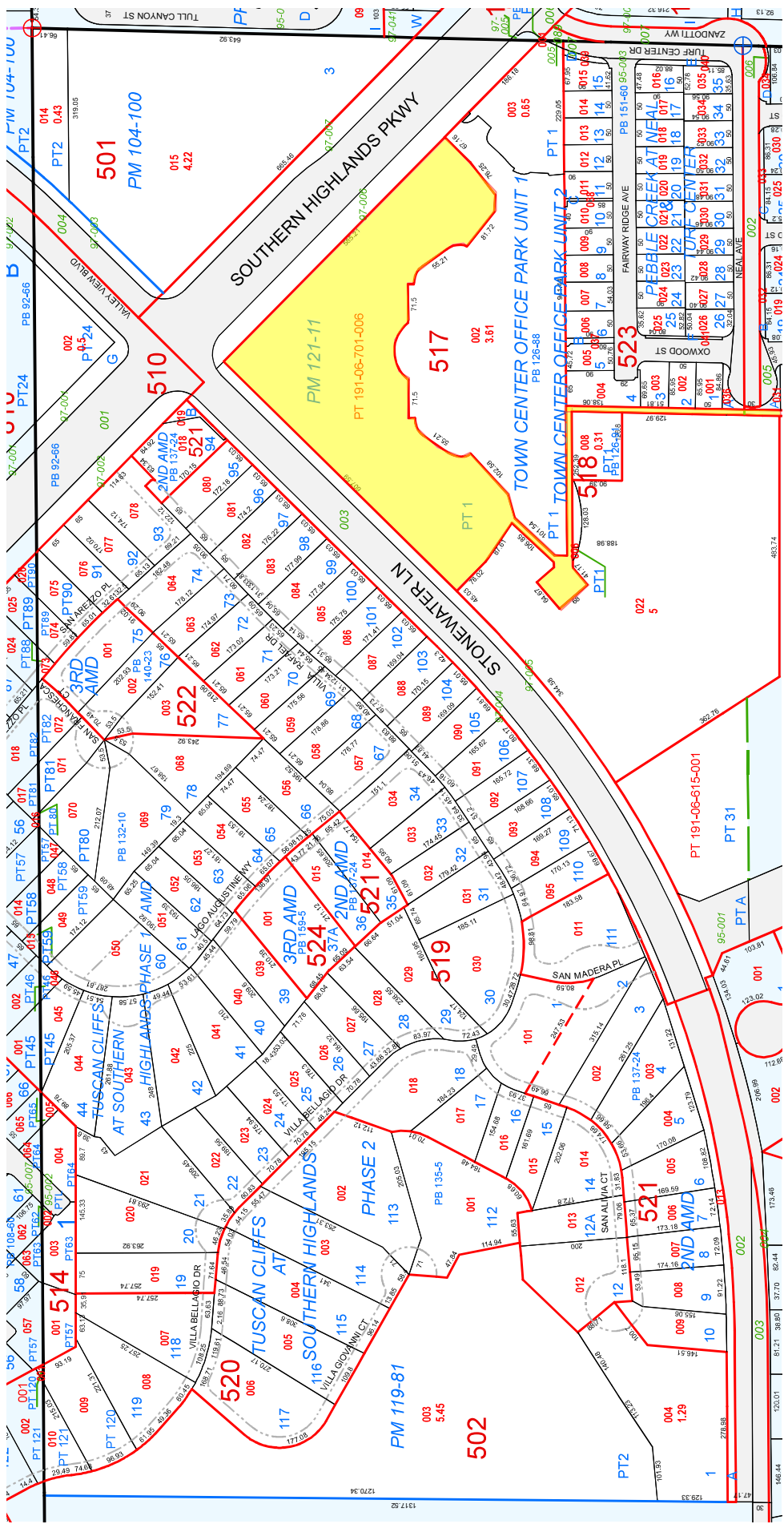


This map is for assessment use only and does NOT represent a survey.
 No liability is assumed for the accuracy of the data delineated herein.
 Information on roads and other non-assessed parcels may be obtained from the Road Document Listing in the Assessor's Office.
 This map is compiled from official records, including surveys and deeds, but only contains the information required for assessment. See the recorded documents for more detailed legal information.
 USE THIS SCALE(FEET) WHEN MAP REDUCED FROM 11X17 ORIGINAL.

MAP LEGEND

| | | |
|-----------------------|------------------------|-------------------------------|
| Parcel Boundary | Condominium Unit | Road Parcel Number |
| Sub Boundary | Air Space PCL | Parcel Number |
| PWLD Boundary | Right Of Way PCL | 1.00 Acreage |
| Road Easement | Sub-Surface PCL | 202 Parcel Sub/Sec Number |
| Match / Leader Line | Historic Lot Line | 2024-16 Plat Recording Number |
| Historic Sub Boundary | Historic PM/D Boundary | 5 Block Number |
| Section Line | | 63.5 Gov. Lot Number |

Scale: 1" = 200'
 Rev: 12/14/2022



This map is for assessment use only and does NOT represent a survey.
 No liability is assumed for the accuracy of the data delineated herein.
 Information on roads and other non-assessed parcels may be obtained from the Road Document Listing in the Assessor's Office.
 This map is compiled from official records, including surveys and deeds, but only contains the information required for assessment. See the recorded documents for more detailed legal information.

USE THIS SCALE (FEET) WHEN MAP REDUCED FROM 1:1X7 ORIGINAL

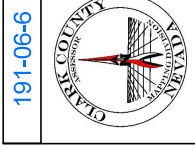
MAP LEGEND

- PARCEL BOUNDARY
- SUB BOUNDARY
- ROAD BOUNDARY
- ROAD EASEMENT
- HISTORIC LOT LINE
- HISTORIC SUB BOUNDARY
- HISTORIC PMLD BOUNDARY
- SECTION LINE
- CONDOMINIUM UNIT
- AIR SPACE PCL
- RIGHT OF WAY PCL
- SUB-SURFACE PCL
- PB 24-48 PLAT RECORDING NUMBER
- LOT NUMBER
- GOV. LOT NUMBER

| | |
|--------|---------|
| 64 163 | 162 161 |
| 75 176 | 177 178 |
| 93 192 | 191 190 |
| 03 204 | 205 206 |

| | | | | | | | | | | | | | | | | | | | | | | | | | | | | | | |
|---|---|---|---|----|----|----|----|----|----|----|----|----|----|----|----|----|----|----|----|----|----|----|----|----|----|----|----|----|----|----|
| 6 | 7 | 8 | 9 | 10 | 11 | 12 | 13 | 14 | 15 | 16 | 17 | 18 | 19 | 20 | 21 | 22 | 23 | 24 | 25 | 26 | 27 | 28 | 29 | 30 | 31 | 32 | 33 | 34 | 35 | 36 |
|---|---|---|---|----|----|----|----|----|----|----|----|----|----|----|----|----|----|----|----|----|----|----|----|----|----|----|----|----|----|----|

| | | | |
|---|---|---|---|
| 8 | 4 | 8 | 4 |
| 5 | 1 | 5 | 1 |
| 6 | 2 | 6 | 2 |
| 7 | 3 | 7 | 3 |
| 8 | 4 | 8 | 4 |
| 5 | 1 | 5 | 1 |



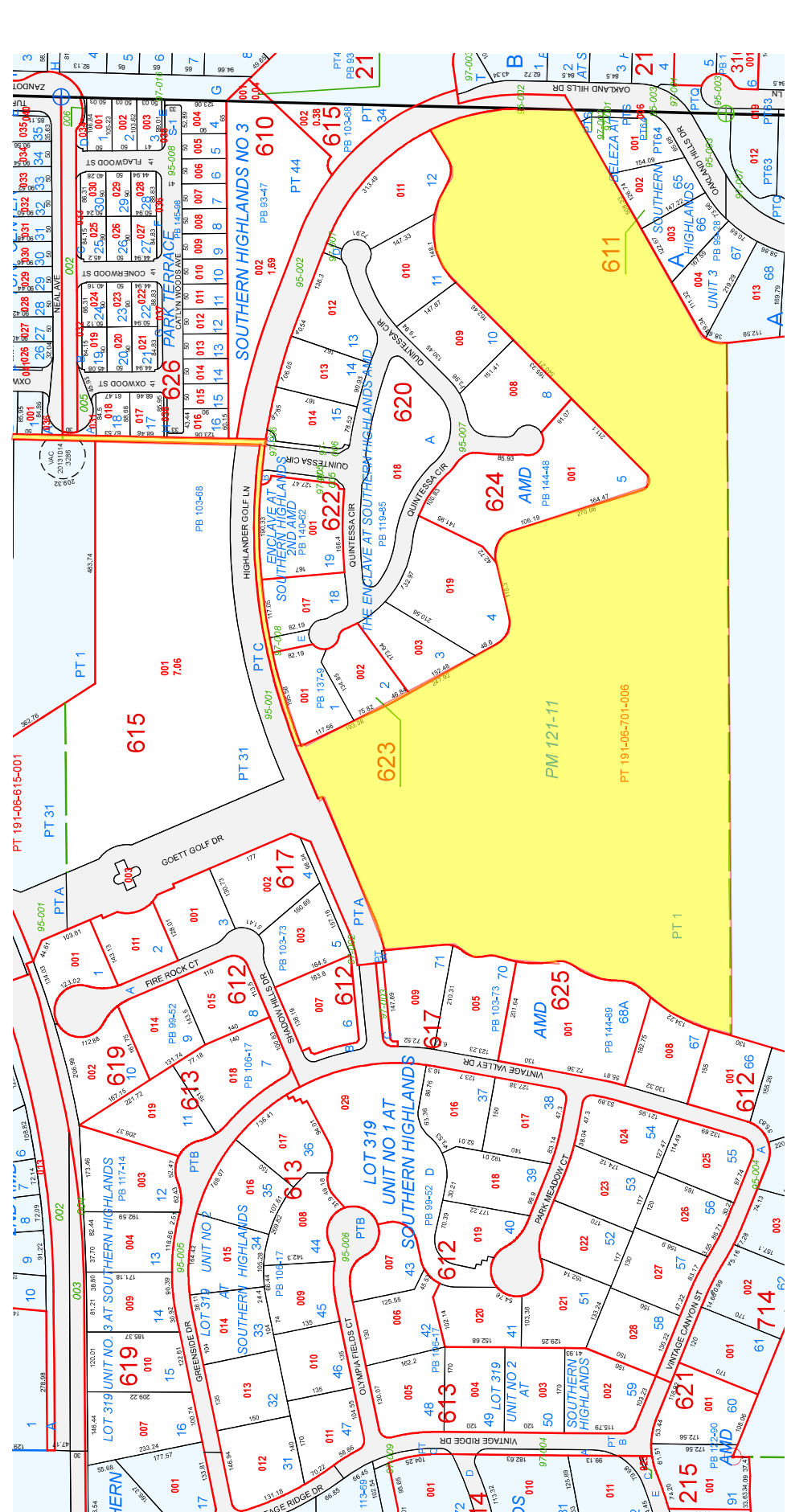
191-06-6

T23S R61E

6

S 2 NE 4

MAP



NOTES

This map is for assessment use only and does NOT represent a survey.
 No liability is assumed for the accuracy of the data delineated herein.
 Information on roads and other non-assessed parcels may be obtained from the Road Document Listing in the Assessor's Office.
 This map is compiled from official records, including surveys and deeds, but only contains the information required for assessment. See the recorded documents for more detailed legal information.
 USE THIS SCALE (FEET) WHEN MAP REDUCED FROM 1:117 ORIGINAL

MAP LEGEND

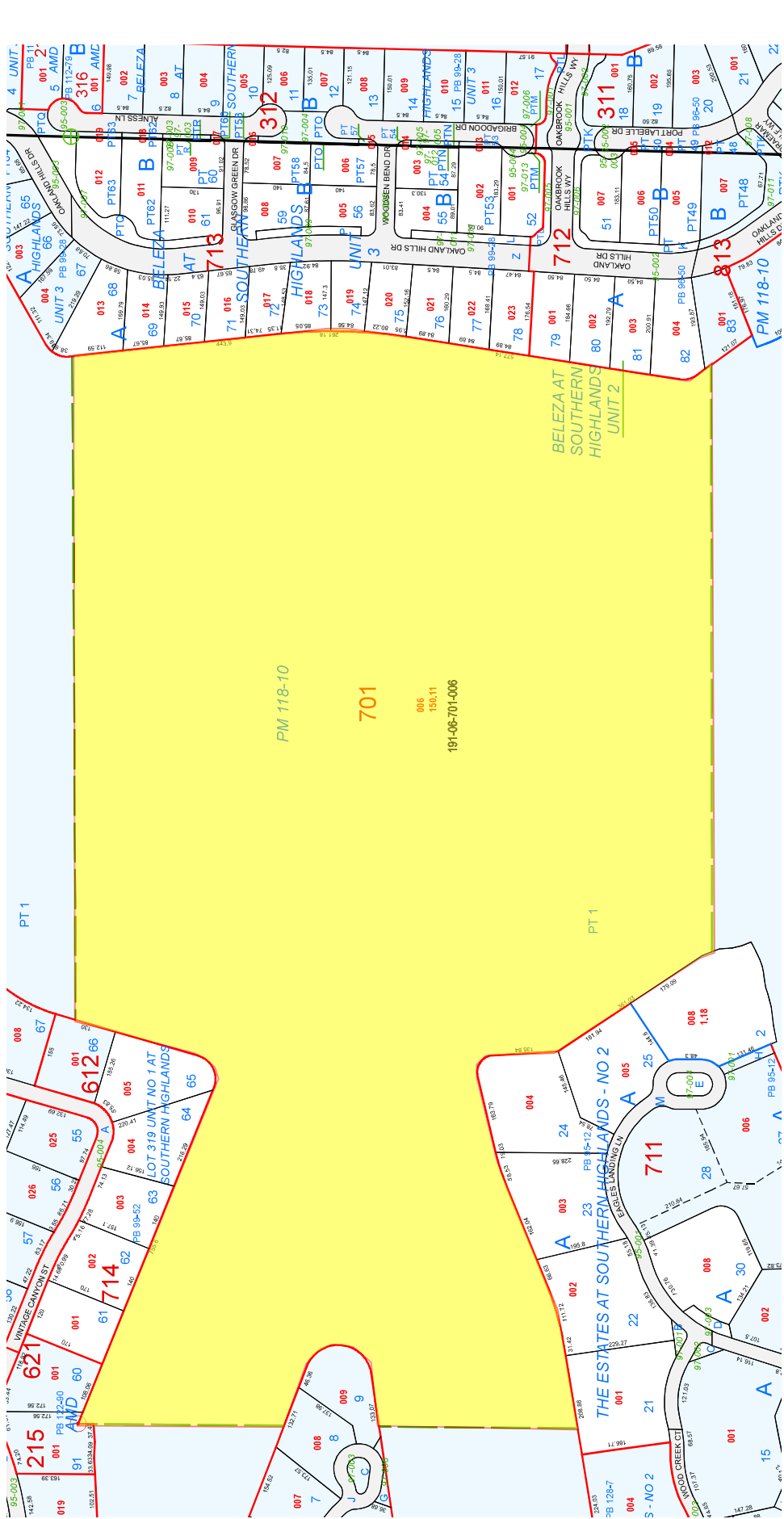
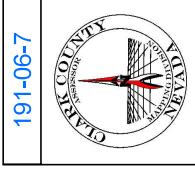
- Parcel Boundary
- Sub Boundary
- PMLD Boundary
- Road Easement
- Match / Leader Line
- Historic Lot Line
- Historic Sub Boundary
- Historic PMLD Boundary
- Section Line
- Condominium Unit
- Air Space PCL
- Right of Way PCL
- Sub-Surface PCL
- PB 24-48 Plat Recording Number
- Block Number
- Lot Number
- Gov. Lot Number

ASSESSOR'S PARCELS - CLARK CO., NV.
Michele W. Shafe - Assessor

BOOK T23S R61E
SEC 6
MAP N 2 SE 4

| | | | | | |
|----|----|----|----|----|----|
| 6 | 5 | 4 | 3 | 2 | 1 |
| 7 | 8 | 9 | 10 | 11 | 12 |
| 13 | 14 | 15 | 16 | 17 | 18 |
| 19 | 20 | 21 | 22 | 23 | 24 |
| 25 | 26 | 27 | 28 | 29 | 30 |
| 31 | 32 | 33 | 34 | 35 | 36 |

Scale: 1" = 200'
Rev: 9/13/2016



This map is for assessment use only and does NOT represent a survey.
 No liability is assumed for the accuracy of the data delineated herein.
 Information on roads and other non-assessed parcels may be obtained from the Road Document Listing in the Assessor's Office.
 This map is compiled from official records, including surveys and deeds, but only contains the information required for assessment. See the recorded documents for more detailed legal information.

NOTES

USE THIS SCALE (FEET) WHEN MAP REDUCED FROM 1:117 ORIGINAL
 0 100 200 300 400 500

MAP LEGEND

- PARCEL BOUNDARY
- SUB BOUNDARY
- PMLD BOUNDARY
- ROAD EASEMENT
- MATCH / LEADER LINE
- HISTORIC LOT LINE
- HISTORIC SUB BOUNDARY
- HISTORIC PMLD BOUNDARY
- SECTION LINE
- CONDOMINIUM UNIT
- AIR SPACE PCL
- RIGHT OF WAY PCL
- SUB-SURFACE PCL
- FB 24-48 PLAT RECORDING NUMBER
- LOT NUMBER
- CONV. LOT NUMBER

191-06-8

CLARK COUNTY
 NEVADA

191-06-8

S 2 SE 4

MAP

6

SEC

| | | | | | |
|----|----|----|----|----|----|
| 6 | 5 | 4 | 3 | 2 | 1 |
| 7 | 8 | 9 | 10 | 11 | 12 |
| 13 | 14 | 15 | 16 | 17 | 18 |
| 19 | 20 | 21 | 22 | 23 | 24 |
| 25 | 26 | 27 | 28 | 29 | 30 |
| 31 | 32 | 33 | 34 | 35 | 36 |

ROK

T23S R61E

64 163 162 161

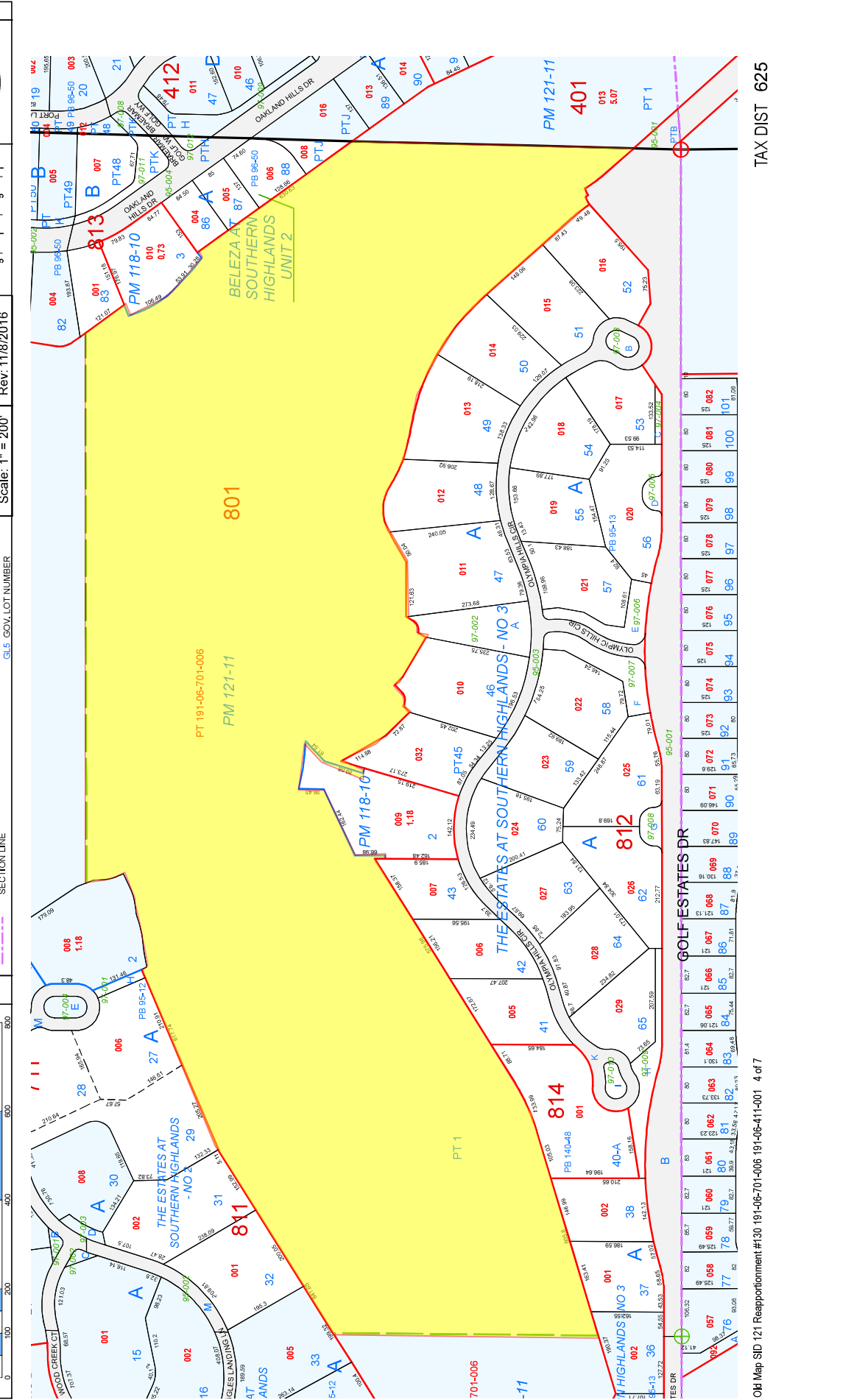
75 176 177 178

93 192 191 190

03 204 205 206

Scale: 1" = 200'

Rev. 11/8/2016



NOTES

This map is for assessment use only and does NOT represent a survey. No liability is assumed for the accuracy of the data delineated herein. Information on roads and other non-assessed parcels may be obtained from the Road Document Listing in the Assessor's Office.

This map is compiled from official records, including surveys and deeds, but only contains the information required for assessment. See the recorded documents for more detailed legal information.

USE THIS SCALE (FEET) WHEN MAP REDUCED FROM 1:117 ORIGINAL

MAP LEGEND

- Parcel Boundary
 - Sub Boundary
 - PMLD Boundary
 - Road Easement
 - Match / Leader Line
 - Historic Lot Line
 - Historic Sub Boundary
 - Historic PMLD Boundary
 - Section Line
- Condominium Unit
 - Air Space PCL
 - Right of Way PCL
 - Sub-Surface PCL
 - Block Number
 - Govt Lot Number

BOOK T23S R61E

SECTION 6

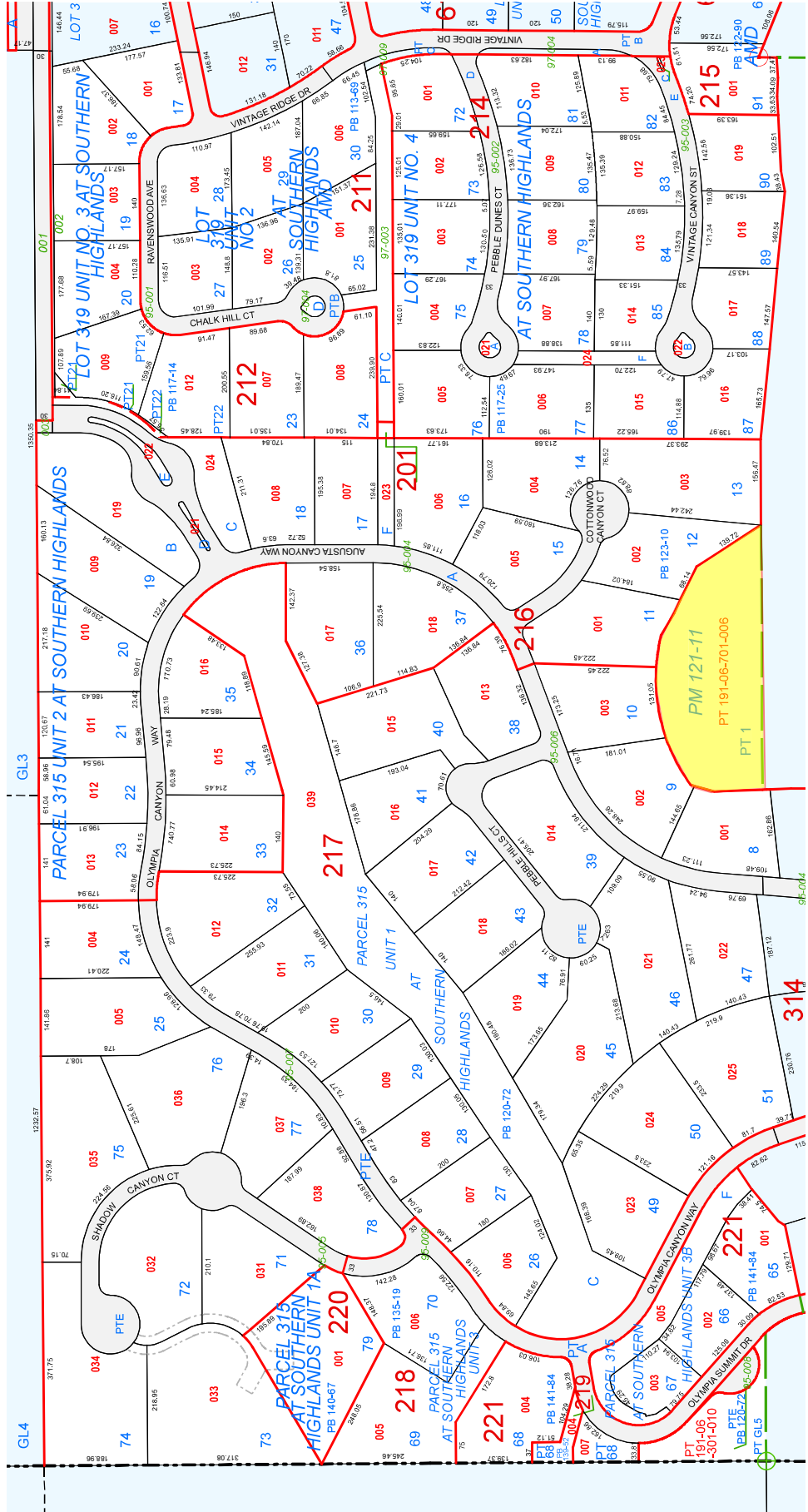
| | | | | | | | |
|----|----|----|----|----|----|----|----|
| 1 | 2 | 3 | 4 | 5 | 6 | 7 | 8 |
| 9 | 10 | 11 | 12 | 13 | 14 | 15 | 16 |
| 17 | 18 | 19 | 20 | 21 | 22 | 23 | 24 |
| 25 | 26 | 27 | 28 | 29 | 30 | 31 | 32 |
| 33 | 34 | 35 | 36 | 37 | 38 | 39 | 40 |

MAP S 2 NW 4

Scale: 1" = 200'

Rev. 10/7/2016

191-06-2



ASSESSOR'S PARCELS - CLARK CO., NV.
Briana Johnson - Assessor

191-06-3

N 2 SW 4

6

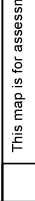
T23S R61E

BOOK 64 163 162 161
 75 176 177 178
 93 192 191 190
 103 204 205 206

MAP 8 4 8 4
 5 1 5 1
 6 2 6 2
 7 3 7 3
 8 4 8 4

REV. 7/11/2022

Scale: 1" = 200'



| | | | | | | | | | | | |
|----|----|----|----|----|----|----|----|----|----|----|----|
| 1 | 2 | 3 | 4 | 5 | 6 | 7 | 8 | 9 | 10 | 11 | 12 |
| 13 | 14 | 15 | 16 | 17 | 18 | 19 | 20 | 21 | 22 | 23 | 24 |
| 25 | 26 | 27 | 28 | 29 | 30 | 31 | 32 | 33 | 34 | 35 | 36 |

| | | | | | | | | | | | | | | | | | | | | | | | | | | | | | | | | | | | | | | | | | | | | | | | | | | | | | | | | | | | | | | | | | | | | | | | | | | | | | | | | | | | | | | | | | | | | | | | | | | | |
|-----|-----|-----|-----|-----|-----|-----|-----|-----|-----|-----|-----|-----|-----|-----|-----|-----|-----|-----|-----|-----|-----|-----|-----|-----|-----|-----|-----|-----|-----|-----|-----|-----|-----|-----|-----|-----|-----|-----|-----|-----|-----|-----|-----|-----|-----|-----|-----|-----|-----|-----|-----|-----|-----|-----|-----|-----|-----|-----|-----|-----|-----|-----|-----|-----|-----|-----|-----|-----|-----|-----|-----|-----|-----|-----|-----|-----|-----|-----|-----|-----|-----|-----|-----|-----|-----|-----|-----|-----|-----|-----|-----|-----|-----|-----|-----|-----|-----|-----|-----|
| 001 | 002 | 003 | 004 | 005 | 006 | 007 | 008 | 009 | 010 | 011 | 012 | 013 | 014 | 015 | 016 | 017 | 018 | 019 | 020 | 021 | 022 | 023 | 024 | 025 | 026 | 027 | 028 | 029 | 030 | 031 | 032 | 033 | 034 | 035 | 036 | 037 | 038 | 039 | 040 | 041 | 042 | 043 | 044 | 045 | 046 | 047 | 048 | 049 | 050 | 051 | 052 | 053 | 054 | 055 | 056 | 057 | 058 | 059 | 060 | 061 | 062 | 063 | 064 | 065 | 066 | 067 | 068 | 069 | 070 | 071 | 072 | 073 | 074 | 075 | 076 | 077 | 078 | 079 | 080 | 081 | 082 | 083 | 084 | 085 | 086 | 087 | 088 | 089 | 090 | 091 | 092 | 093 | 094 | 095 | 096 | 097 | 098 | 099 | 100 |
|-----|-----|-----|-----|-----|-----|-----|-----|-----|-----|-----|-----|-----|-----|-----|-----|-----|-----|-----|-----|-----|-----|-----|-----|-----|-----|-----|-----|-----|-----|-----|-----|-----|-----|-----|-----|-----|-----|-----|-----|-----|-----|-----|-----|-----|-----|-----|-----|-----|-----|-----|-----|-----|-----|-----|-----|-----|-----|-----|-----|-----|-----|-----|-----|-----|-----|-----|-----|-----|-----|-----|-----|-----|-----|-----|-----|-----|-----|-----|-----|-----|-----|-----|-----|-----|-----|-----|-----|-----|-----|-----|-----|-----|-----|-----|-----|-----|-----|-----|-----|

- MAP LEGEND**
- PARCEL BOUNDARY
 - SUB BOUNDARY
 - ROAD EASEMENT
 - HISTORIC LOT LINE
 - HISTORIC SUB BOUNDARY
 - HISTORIC PMLD BOUNDARY
 - CONDOMINIUM UNIT
 - AIR SPACE PCL
 - RIGHT OF WAY PCL
 - SUB-SURFACE PCL
 - PT 24-48 PLAT RECORDING NUMBER
 - LOT NUMBER
 - BLK NUMBER
 - GVLS LOT NUMBER

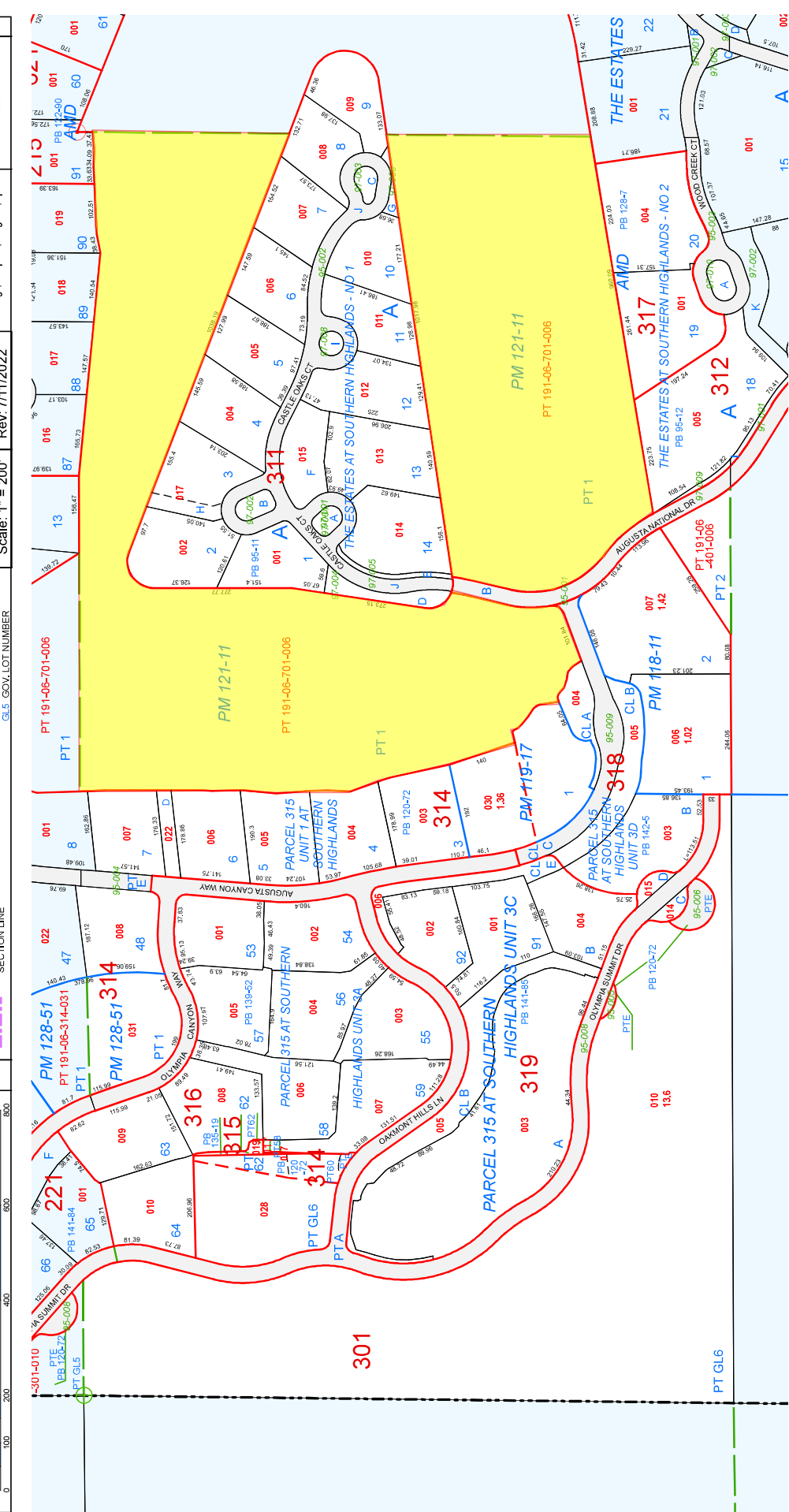
NOTES

This map is for assessment use only and does NOT represent a survey.

No liability is assumed for the accuracy of the data delineated herein. Information on roads and other non-assessed parcels may be obtained from the Road Document Listing in the Assessor's Office.

This map is compiled from official records, including surveys and deeds, but only contains the information required for assessment. See the recorded documents for more detailed legal information.

USE THIS SCALE (FEET) WHEN MAP REDUCED FROM 1:117 ORIGINAL



ASSESSOR'S PARCELS - CLARK COUNTY, NV.
Briana Johnson - Assessor

723S R61E
 6
 S 2 SW 4
 191-06-4



| | | | | | | | | | | | | | | | | | | | | | | | | | | | | | | | | | | | |
|---|---|---|---|---|---|---|---|---|----|----|----|----|----|----|----|----|----|----|----|----|----|----|----|----|----|----|----|----|----|----|----|----|----|----|----|
| 1 | 2 | 3 | 4 | 5 | 6 | 7 | 8 | 9 | 10 | 11 | 12 | 13 | 14 | 15 | 16 | 17 | 18 | 19 | 20 | 21 | 22 | 23 | 24 | 25 | 26 | 27 | 28 | 29 | 30 | 31 | 32 | 33 | 34 | 35 | 36 |
| 1 | 2 | 3 | 4 | 5 | 6 | 7 | 8 | 9 | 10 | 11 | 12 | 13 | 14 | 15 | 16 | 17 | 18 | 19 | 20 | 21 | 22 | 23 | 24 | 25 | 26 | 27 | 28 | 29 | 30 | 31 | 32 | 33 | 34 | 35 | 36 |

| | |
|---------|---------|
| 004 163 | 162 161 |
| 75 176 | 177 178 |
| 93 192 | 191 190 |
| 203 204 | 205 206 |

Scale: 1" = 200'

NOTES

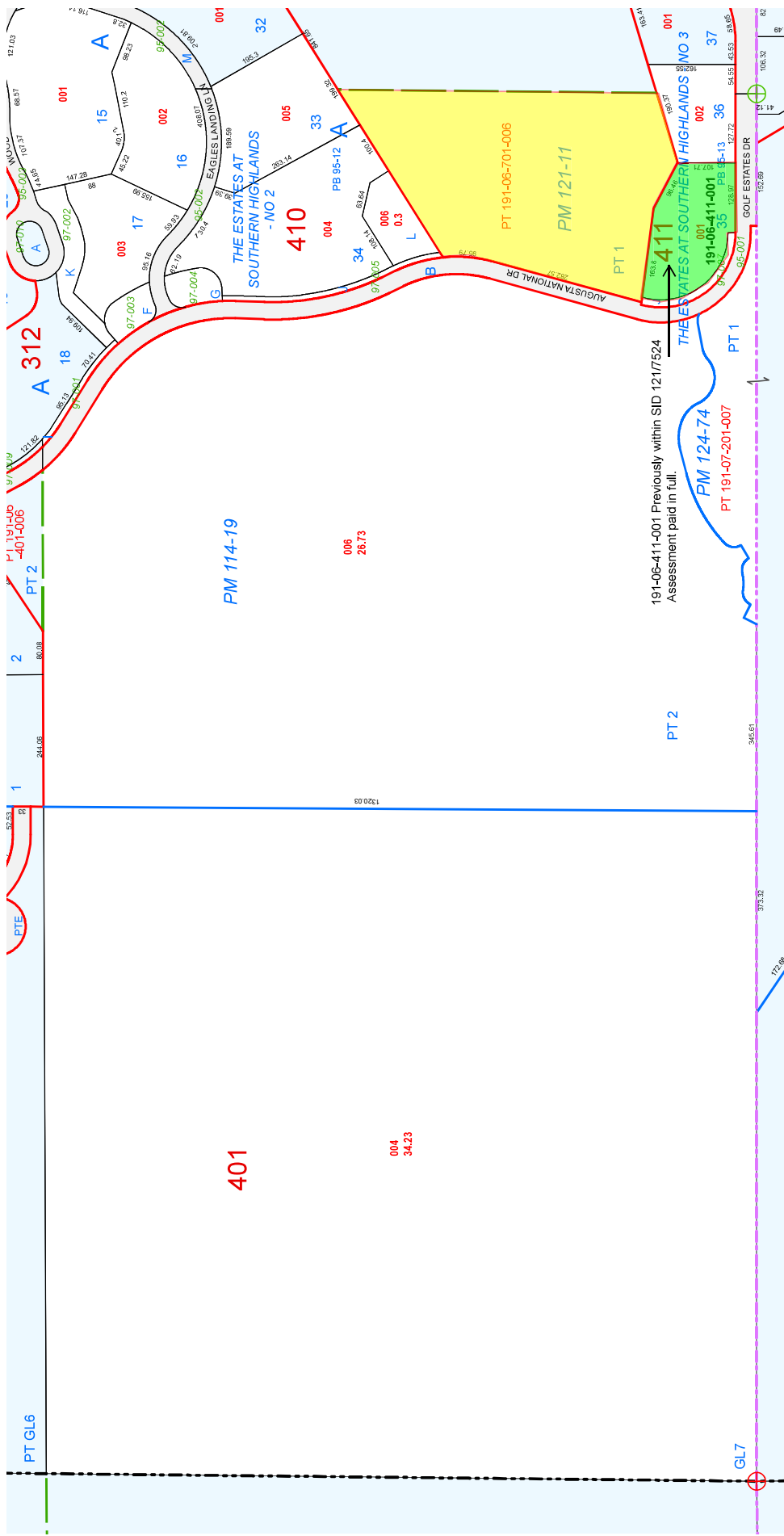
This map is for assessment use only and does NOT represent a survey. No liability is assumed for the accuracy of the data delineated herein. Information on roads and other non-assessed parcels may be obtained from the Road Document Listing in the Assessor's Office.

This map is compiled from official records, including surveys and deeds, but only contains the information required for assessment. See the recorded documents for more detailed legal information.

USE THIS SCALE (FEET) WHEN MAP REDUCED FROM 11X17 ORIGINAL.

MAP LEGEND

| | |
|--|------------------------|
| | PARCEL BOUNDARY |
| | SUB BOUNDARY |
| | PWLD BOUNDARY |
| | ROAD EASEMENT |
| | MATCH / LEADER LINE |
| | HISTORIC LOT LINE |
| | HISTORIC SUB BOUNDARY |
| | HISTORIC PWLD BOUNDARY |
| | SECTION LINE |



ASSESSOR'S PARCELS - CLARK COUNTY, NV.
 Briana Johnson - Assessor

| | |
|--------|---------|
| 64 163 | 162 161 |
| 75 176 | 177 176 |
| 93 192 | 191 190 |
| 03 204 | 205 205 |

| | |
|----|----|
| 6 | 6 |
| 1 | 1 |
| 2 | 2 |
| 3 | 3 |
| 4 | 4 |
| 5 | 5 |
| 6 | 6 |
| 7 | 7 |
| 8 | 8 |
| 9 | 9 |
| 10 | 10 |
| 11 | 11 |
| 12 | 12 |
| 13 | 13 |
| 14 | 14 |
| 15 | 15 |
| 16 | 16 |
| 17 | 17 |
| 18 | 18 |
| 19 | 19 |
| 20 | 20 |
| 21 | 21 |
| 22 | 22 |
| 23 | 23 |
| 24 | 24 |
| 25 | 25 |
| 26 | 26 |
| 27 | 27 |
| 28 | 28 |
| 29 | 29 |
| 30 | 30 |
| 31 | 31 |
| 32 | 32 |
| 33 | 33 |
| 34 | 34 |
| 35 | 35 |
| 36 | 36 |

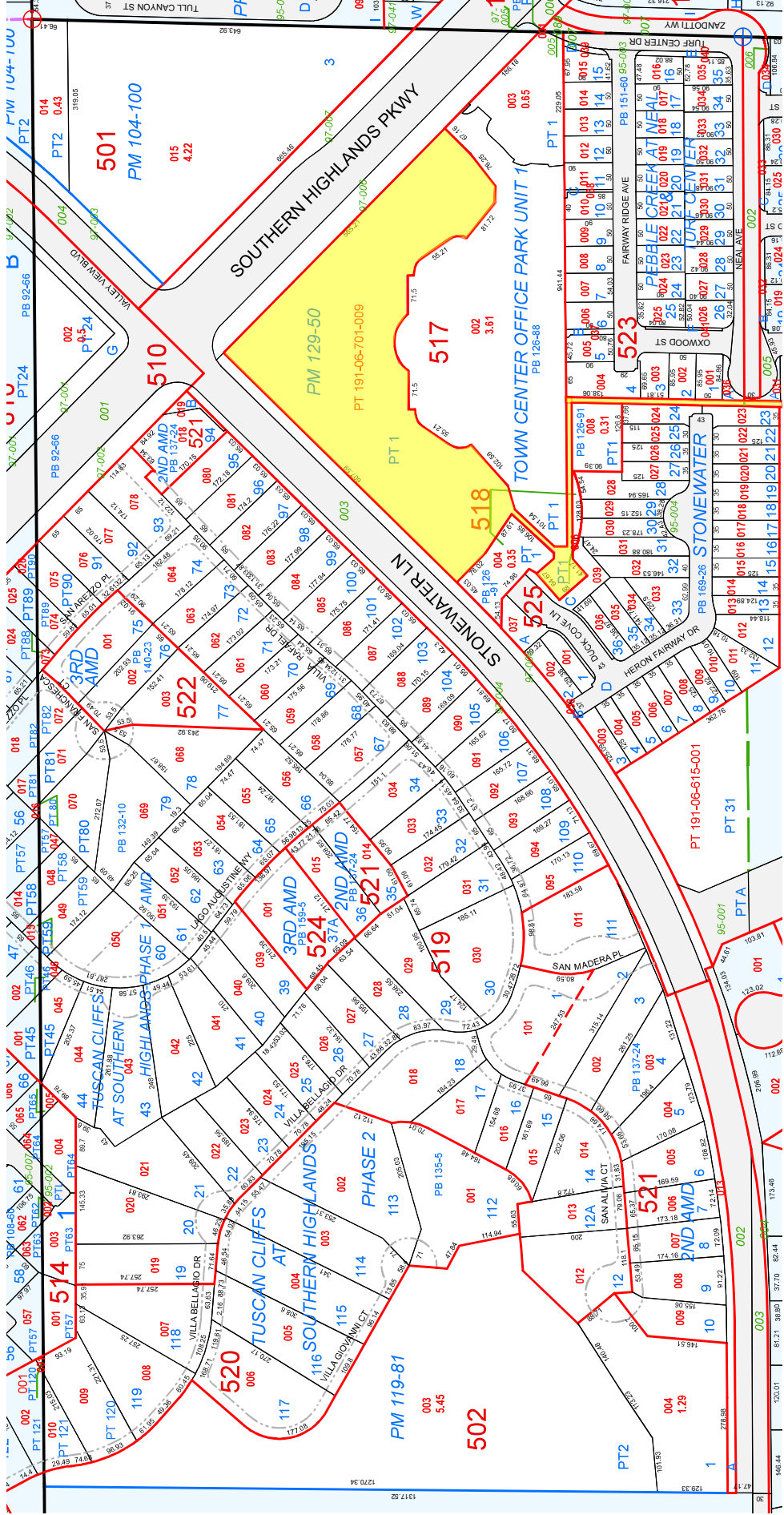
| |
|----------|
| 191-06-5 |
| N 2 NE 4 |
| 6 |
| 1/2/2024 |



This map is for assessment use only and does NOT represent a survey.
 No liability is assumed for the accuracy of the data delineated herein.
 Information on roads and other non-assessed parcels may be obtained from the Road Document Listing in the Assessor's Office.
 This map is compiled from official records, including surveys and deeds, but only contains the information required for assessment. See the recorded documents for more detailed legal information.
 USE THIS SCALE(FEET) WHEN MAP REDUCED FROM 11X17 ORIGINAL.

MAP LEGEND

| | | |
|-----------------------|-----------------------|----------------------------|
| Parcel Boundary | Condominium Unit | Road Parcel Number |
| Sub Boundary | Air Space PCL | Parcel Number |
| PWLD Boundary | Right of Way PCL | 1.00 Acreage |
| Road Easement | Sub-Surface PCL | 202 Parcel Sub/Seco Number |
| Match / Leader Line | Historic Lot Line | 202 Parcel Sub/Seco Number |
| Historic Sub Boundary | Historic PWD Boundary | 5 Block Number |
| Section Line | | 63.5 Gov. Lot Number |



Scale: 1" = 200'
 Rev: 1/2/2024
 TOWN CENTER OFFICE PARK UNIT 1
 SOUTHERN HIGHLANDS PKWY
 STONEWATER LN
 PHASE 2
 PHASE 1
 PHASE 3
 PHASE 4
 PHASE 5
 PHASE 6
 PHASE 7
 PHASE 8
 PHASE 9
 PHASE 10
 PHASE 11
 PHASE 12
 PHASE 13
 PHASE 14
 PHASE 15
 PHASE 16
 PHASE 17
 PHASE 18
 PHASE 19
 PHASE 20
 PHASE 21
 PHASE 22
 PHASE 23
 PHASE 24
 PHASE 25
 PHASE 26
 PHASE 27
 PHASE 28
 PHASE 29
 PHASE 30
 PHASE 31
 PHASE 32
 PHASE 33
 PHASE 34
 PHASE 35
 PHASE 36
 PHASE 37
 PHASE 38
 PHASE 39
 PHASE 40
 PHASE 41
 PHASE 42
 PHASE 43
 PHASE 44
 PHASE 45
 PHASE 46
 PHASE 47
 PHASE 48
 PHASE 49
 PHASE 50
 PHASE 51
 PHASE 52
 PHASE 53
 PHASE 54
 PHASE 55
 PHASE 56
 PHASE 57
 PHASE 58
 PHASE 59
 PHASE 60
 PHASE 61
 PHASE 62
 PHASE 63
 PHASE 64
 PHASE 65
 PHASE 66
 PHASE 67
 PHASE 68
 PHASE 69
 PHASE 70
 PHASE 71
 PHASE 72
 PHASE 73
 PHASE 74
 PHASE 75
 PHASE 76
 PHASE 77
 PHASE 78
 PHASE 79
 PHASE 80
 PHASE 81
 PHASE 82
 PHASE 83
 PHASE 84
 PHASE 85
 PHASE 86
 PHASE 87
 PHASE 88
 PHASE 89
 PHASE 90
 PHASE 91
 PHASE 92
 PHASE 93
 PHASE 94
 PHASE 95
 PHASE 96
 PHASE 97
 PHASE 98
 PHASE 99
 PHASE 100
 PHASE 101
 PHASE 102
 PHASE 103
 PHASE 104
 PHASE 105
 PHASE 106
 PHASE 107
 PHASE 108
 PHASE 109
 PHASE 110
 PHASE 111
 PHASE 112
 PHASE 113
 PHASE 114
 PHASE 115
 PHASE 116
 PHASE 117
 PHASE 118
 PHASE 119
 PHASE 120
 PHASE 121
 PHASE 122
 PHASE 123
 PHASE 124
 PHASE 125
 PHASE 126
 PHASE 127
 PHASE 128
 PHASE 129
 PHASE 130
 PHASE 131
 PHASE 132
 PHASE 133
 PHASE 134
 PHASE 135
 PHASE 136
 PHASE 137
 PHASE 138
 PHASE 139
 PHASE 140
 PHASE 141
 PHASE 142
 PHASE 143
 PHASE 144
 PHASE 145
 PHASE 146
 PHASE 147
 PHASE 148
 PHASE 149
 PHASE 150
 PHASE 151
 PHASE 152
 PHASE 153
 PHASE 154
 PHASE 155
 PHASE 156
 PHASE 157
 PHASE 158
 PHASE 159
 PHASE 160
 PHASE 161
 PHASE 162
 PHASE 163
 PHASE 164
 PHASE 165
 PHASE 166
 PHASE 167
 PHASE 168
 PHASE 169
 PHASE 170
 PHASE 171
 PHASE 172
 PHASE 173
 PHASE 174
 PHASE 175
 PHASE 176
 PHASE 177
 PHASE 178
 PHASE 179
 PHASE 180
 PHASE 181
 PHASE 182
 PHASE 183
 PHASE 184
 PHASE 185
 PHASE 186
 PHASE 187
 PHASE 188
 PHASE 189
 PHASE 190
 PHASE 191
 PHASE 192
 PHASE 193
 PHASE 194
 PHASE 195
 PHASE 196
 PHASE 197
 PHASE 198
 PHASE 199
 PHASE 200

This map is for assessment use only and does NOT represent a survey.
 No liability is assumed for the accuracy of the data delineated herein.
 Information on roads and other non-assessed parcels may be obtained
 from the Road Document Listing in the Assessor's Office.
 This map is compiled from official records, including surveys and deeds,
 but only contains the information required for assessment. See the
 recorded documents for more detailed legal information.

NOTES

USE THIS SCALE(FEET) WHEN MAP REDUCED FROM 1:1X1 ORIGINAL.

MAP LEGEND

- Parcel Boundary
- Sub Boundary
- PWLD Boundary
- Road Easement
- Match / Leader Line
- Historic Lot Line
- Historic Sub Boundary
- Historic PWD Boundary
- Section Line

ASSESSOR'S PARCELS - CLARK COUNTY, NV.
 Briana Johnson - Assessor

64 163 - 162 161
 75 176 177 178
 93 192 191 190
 03 204 - 205 206

CONDOMINIUM UNIT
 AIR SPACE PCL
 RIGHT OF WAY PCL
 SUB-SURFACE PCL

202 PARCEL SUB/SEQ NUMBER
 PB 24-46 PLAT RECORDING NUMBER
 5 LOT NUMBER
 G.S. GOV. LOT NUMBER

Scale: 1" = 200'

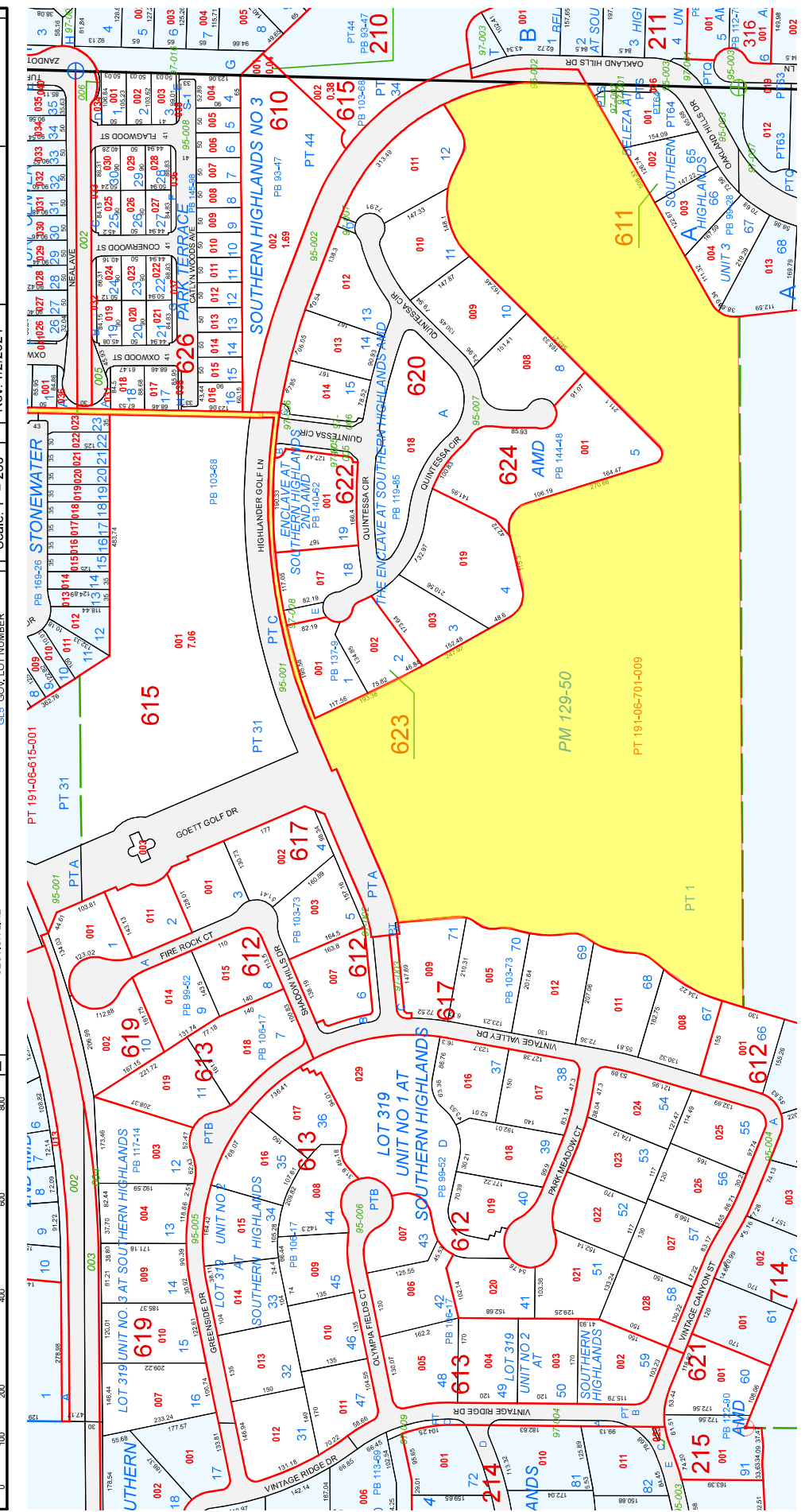
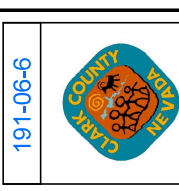
MAP

| | | | | | | | | | | | | | | | | | | | | | | | | | | | | | | |
|---|---|---|---|----|----|----|----|----|----|----|----|----|----|----|----|----|----|----|----|----|----|----|----|----|----|----|----|----|----|----|
| 6 | 7 | 8 | 9 | 10 | 11 | 12 | 13 | 14 | 15 | 16 | 17 | 18 | 19 | 20 | 21 | 22 | 23 | 24 | 25 | 26 | 27 | 28 | 29 | 30 | 31 | 32 | 33 | 34 | 35 | 36 |
|---|---|---|---|----|----|----|----|----|----|----|----|----|----|----|----|----|----|----|----|----|----|----|----|----|----|----|----|----|----|----|

SEC

| | | | | | | | | | | | | | | | | | | | | | | | | | | | | | | | |
|---|---|---|---|---|----|----|----|----|----|----|----|----|----|----|----|----|----|----|----|----|----|----|----|----|----|----|----|----|----|----|----|
| 5 | 6 | 7 | 8 | 9 | 10 | 11 | 12 | 13 | 14 | 15 | 16 | 17 | 18 | 19 | 20 | 21 | 22 | 23 | 24 | 25 | 26 | 27 | 28 | 29 | 30 | 31 | 32 | 33 | 34 | 35 | 36 |
|---|---|---|---|---|----|----|----|----|----|----|----|----|----|----|----|----|----|----|----|----|----|----|----|----|----|----|----|----|----|----|----|

Rev: 1/2/2024



This map is for assessment use only and does NOT represent a survey.

No liability is assumed for the accuracy of the data delineated herein. Information on roads and other non-assessed parcels may be obtained from the Road Document Listing in the Assessor's Office.

This map is compiled from official records, including surveys and deeds, but only contains the information required for assessment. See the recorded documents for more detailed legal information.

USE THIS SCALE(FEET) WHEN MAP REDUCED FROM 1:1X1 ORIGINAL.

NOTES

MAP LEGEND

| | | | |
|--|------------------------|--|--------------------------------|
| | PARCEL BOUNDARY | | CONDOMINIUM UNIT |
| | SUB BOUNDARY | | AIR SPACE PCL |
| | PMLD BOUNDARY | | RIGHT OF WAY PCL |
| | ROAD EASEMENT | | SUB-SURFACE PCL |
| | MATCH / LEADER LINE | | 202 PARCEL SUB/SEQ NUMBER |
| | HISTORIC LOT LINE | | PB 24-46 PLAT RECORDING NUMBER |
| | HISTORIC SUB BOUNDARY | | 5 BLOCK NUMBER |
| | HISTORIC PMLD BOUNDARY | | 3.5 GOV. LOT NUMBER |
| | SECTION LINE | | |

723S R61E

| | | | |
|-----|-----|-----|-----|
| 004 | 163 | 162 | 161 |
| 005 | 176 | 177 | 178 |
| 006 | 192 | 191 | 190 |
| 007 | 204 | 205 | 206 |

Scale: 1" = 200'

6

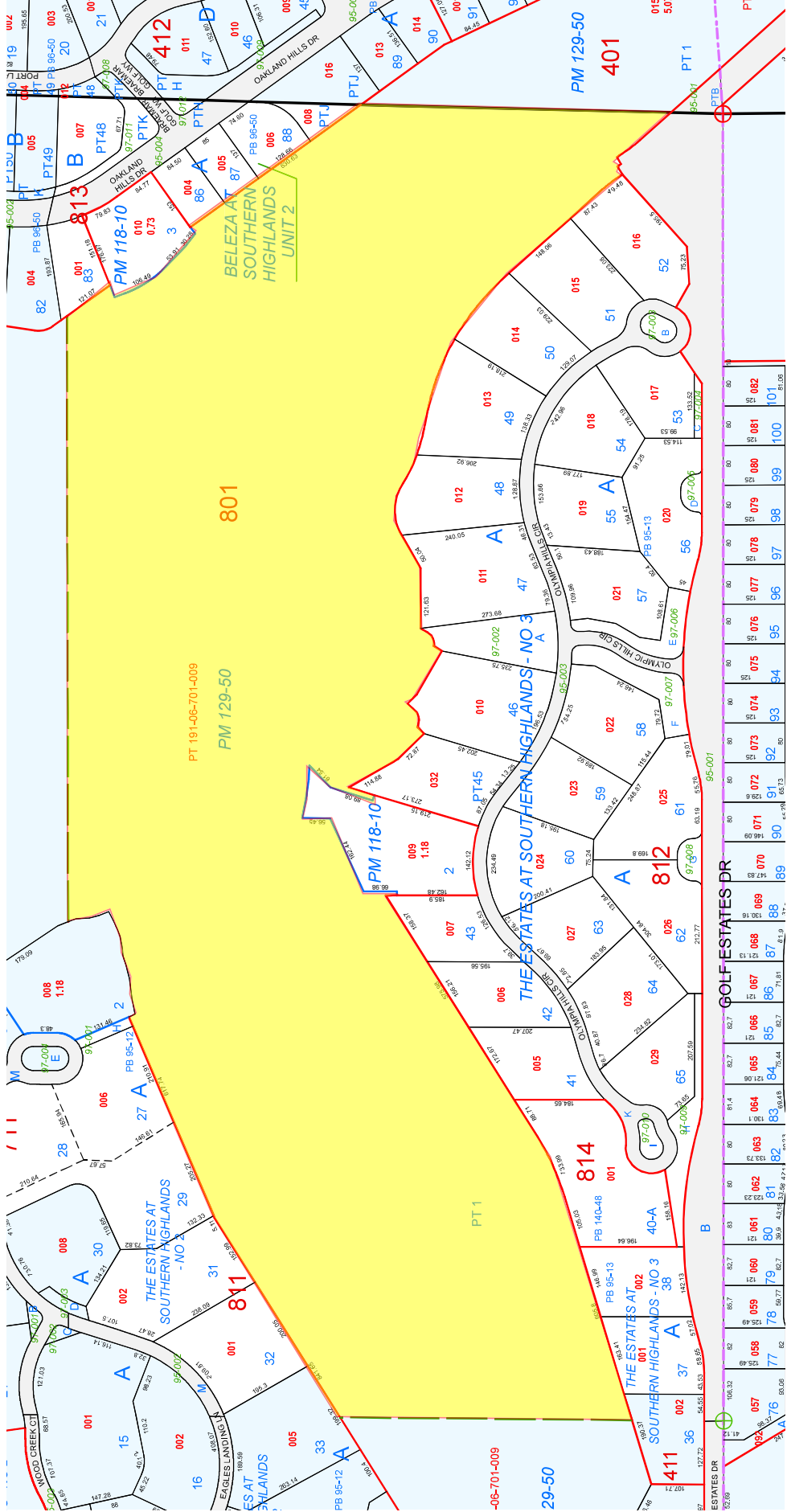
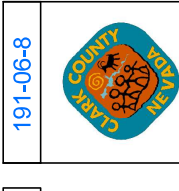
| | | | | | |
|----|----|----|----|----|----|
| 6 | 5 | 4 | 3 | 2 | 1 |
| 7 | 8 | 9 | 10 | 11 | 12 |
| 13 | 14 | 15 | 16 | 17 | 18 |
| 19 | 20 | 21 | 22 | 23 | 24 |
| 25 | 26 | 27 | 28 | 29 | 30 |
| 31 | 32 | 33 | 34 | 35 | 36 |

Rev: 1/2/2024

S 2 SE 4

| | | | | | |
|----|----|----|----|----|----|
| 5 | 6 | 7 | 8 | 9 | 10 |
| 11 | 12 | 13 | 14 | 15 | 16 |
| 17 | 18 | 19 | 20 | 21 | 22 |
| 23 | 24 | 25 | 26 | 27 | 28 |
| 29 | 30 | 31 | 32 | 33 | 34 |
| 35 | 36 | 37 | 38 | 39 | 40 |

191-06-8



ASSESSOR'S PARCELS - CLARK COUNTY, NV.

Briana Johnson - Assessor

MAP LEGEND

| | | | |
|--|-------------------------|--|--------------------------------|
| | PARCEL BOUNDARY | | CONDOMINIUM UNIT |
| | SUB BOUNDARY | | AIR SPACE PCL |
| | PWLD EASEMENT | | RIGHT OF WAY PCL |
| | ROAD EASEMENT | | SUB-SURFACE PCL |
| | MATCH / LEADER LINE | | 202 PARCEL SUB/SECT NUMBER |
| | HISTORIC LOT LINE | | PB 24-46 PLAT RECORDING NUMBER |
| | HISTORIC SUB BOUNDARY | | 5 BLOCK NUMBER |
| | HISTORIC PMA/D BOUNDARY | | 5 LOT NUMBER |
| | SECTION LINE | | GL-5, GOV. LOT NUMBER |

BOOK

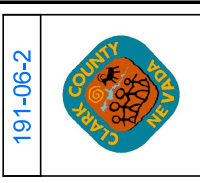
| | |
|---------|---------|
| 64-163 | 162-161 |
| 75-176 | 177-178 |
| 93-192 | 191-190 |
| 103-204 | 205-206 |

SEC

| | | | |
|---|---|---|---|
| 6 | 4 | 8 | 4 |
| 5 | 1 | 5 | 1 |
| 6 | 2 | 6 | 2 |
| 7 | 3 | 7 | 3 |
| 8 | 4 | 8 | 4 |
| 5 | 1 | 5 | 1 |

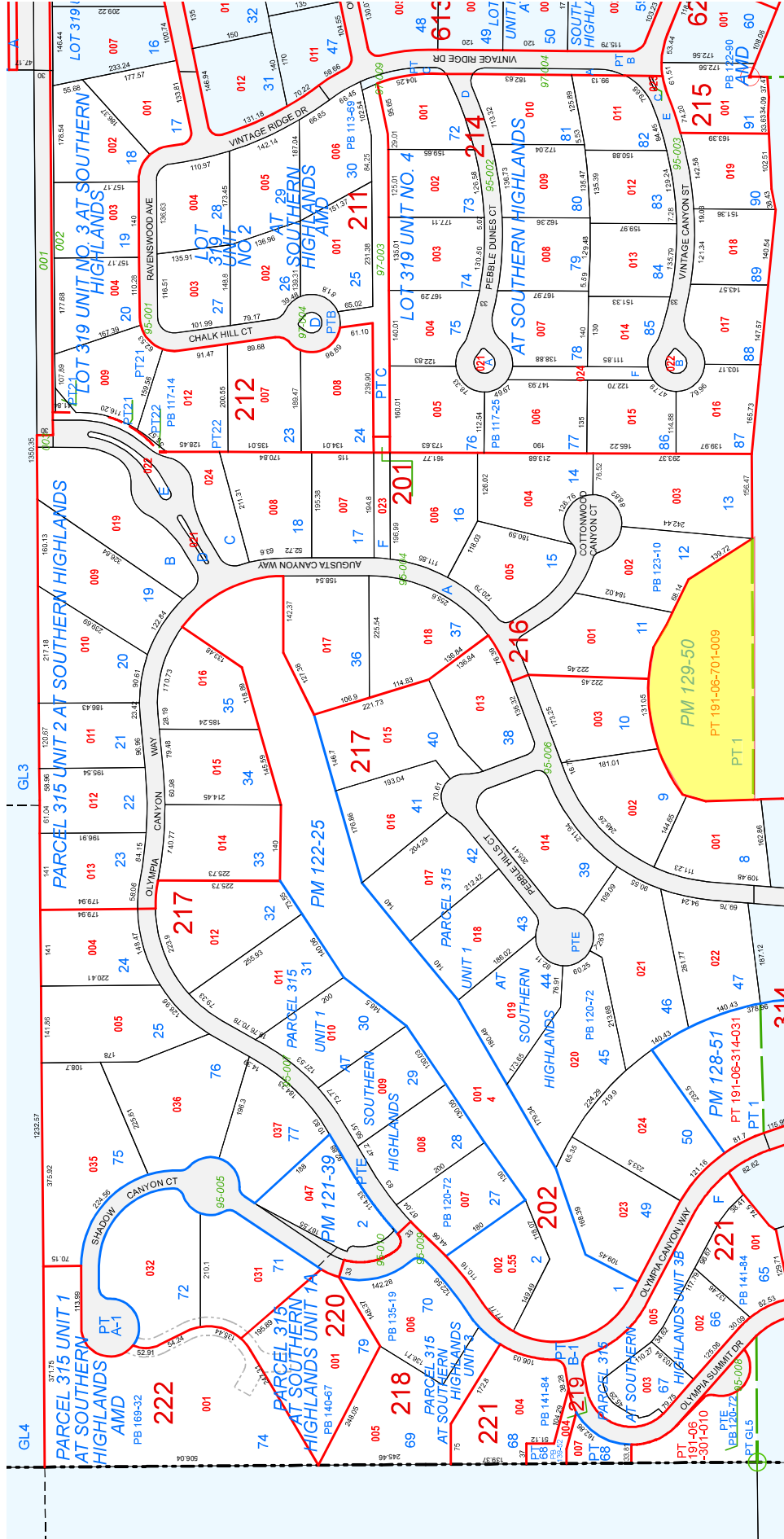
Scale: 1" = 200'

Rev: 1/2/2024



MA

| |
|----------|
| S 2 NW 4 |
| 6 |
| 191-06-2 |



ASSESSOR'S PARCELS - CLARK COUNTY, NV.
 Briana Johnson - Assessor

723S R61E

6

N 2 SW 4

191-06-3

- MAP LEGEND**
- PARCEL BOUNDARY
 - SUB BOUNDARY
 - PWLD BOUNDARY
 - ROAD EASEMENT
 - MATCH / LEADER LINE
 - HISTORIC LOT LINE
 - HISTORIC SUB BOUNDARY
 - HISTORIC PMA/D BOUNDARY
 - SECTION LINE
 - CONDOMINIUM UNIT
 - AIR SPACE PCL
 - RIGHT OF WAY PCL
 - SUB-SURFACE PCL
 - 202 PARCEL SUB/SEQ NUMBER
 - PB 24-46 PLAT RECORDING NUMBER
 - 5 BLOCK NUMBER
 - 5 LOT NUMBER
 - CLAS. GOV. LOT NUMBER

NOTES

This map is for assessment use only and does NOT represent a survey.

No liability is assumed for the accuracy of the data delineated herein. Information on roads and other non-assessed parcels may be obtained from the Road Document Listing in the Assessor's Office.

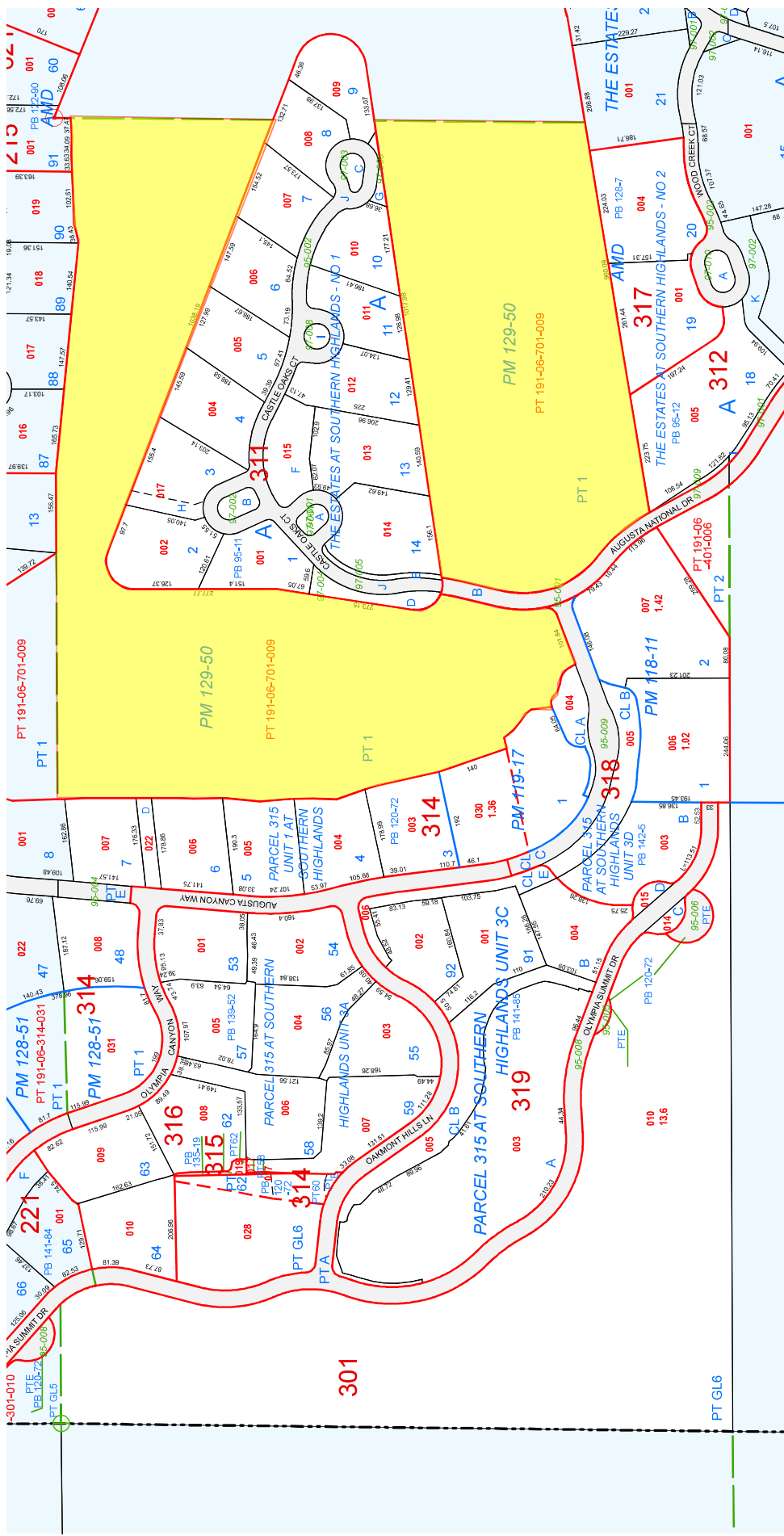
This map is compiled from official records, including surveys and deeds, but only contains the information required for assessment. See the recorded documents for more detailed legal information.

USE THIS SCALE (FEET) WHEN MAP REDUCED FROM 1:1X17 ORIGINAL.

Scale: 1" = 200'

Rev: 1/2/2024

| | | | | | | | | | | | | | | | | | | | | | | | | | | | | | | | | | | | |
|---|---|---|---|---|---|---|---|---|----|----|----|----|----|----|----|----|----|----|----|----|----|----|----|----|----|----|----|----|----|----|----|----|----|----|----|
| 1 | 2 | 3 | 4 | 5 | 6 | 7 | 8 | 9 | 10 | 11 | 12 | 13 | 14 | 15 | 16 | 17 | 18 | 19 | 20 | 21 | 22 | 23 | 24 | 25 | 26 | 27 | 28 | 29 | 30 | 31 | 32 | 33 | 34 | 35 | 36 |
|---|---|---|---|---|---|---|---|---|----|----|----|----|----|----|----|----|----|----|----|----|----|----|----|----|----|----|----|----|----|----|----|----|----|----|----|



ASSESSOR'S PARCELS - CLARK COUNTY, NV.
 Briana Johnson - Assessor

T23S R61E

6

S 2 SW 4

191-06-4

| | |
|---------|---------|
| 004-163 | 162 161 |
| 75 176 | 177 178 |
| 93 192 | 191 190 |
| 203 204 | 205 206 |

Scale: 1" = 200'

| | | |
|-----------------------|------------------------|--------------------------------|
| PARCEL BOUNDARY | CONDOMINIUM UNIT | 007 ROAD PARCEL NUMBER |
| SUB BOUNDARY | AIR SPACE PCL | 001 PARCEL NUMBER |
| PWLD EASEMENT | RIGHT OF WAY PCL | 1.00 ACREAGE |
| ROAD EASEMENT | SUB-SURFACE PCL | 202 PARCEL SUB/SEQ NUMBER |
| MATCH / LEADER LINE | HISTORIC LOT LINE | PB 24-46 PLAT RECORDING NUMBER |
| HISTORIC SUB BOUNDARY | HISTORIC PWLD BOUNDARY | 5 BLOCK NUMBER |
| SECTION LINE | GLS, GOV. LOT NUMBER | 5 1 5 1 |

NOTES

This map is for assessment use only and does NOT represent a survey.

No liability is assumed for the accuracy of the data delineated herein. Information on roads and other non-assessed parcels may be obtained from the Road Document Listing in the Assessor's Office.

This map is compiled from official records, including surveys and deeds, but only contains the information required for assessment. See the recorded documents for more detailed legal information.

USE THIS SCALE (FEET) WHEN MAP REDUCED FROM 11X17 ORIGINAL.

MAP LEGEND

| | | | | | | | | | | | | | | | | | | | | | | | | | | | | | | | | | | | | | | | |
|---|---|---|---|---|---|---|---|---|----|----|----|----|----|----|----|----|----|----|----|----|----|----|----|----|----|----|----|----|----|----|----|----|----|----|----|----|----|----|----|
| 1 | 2 | 3 | 4 | 5 | 6 | 7 | 8 | 9 | 10 | 11 | 12 | 13 | 14 | 15 | 16 | 17 | 18 | 19 | 20 | 21 | 22 | 23 | 24 | 25 | 26 | 27 | 28 | 29 | 30 | 31 | 32 | 33 | 34 | 35 | 36 | 37 | 38 | 39 | 40 |
|---|---|---|---|---|---|---|---|---|----|----|----|----|----|----|----|----|----|----|----|----|----|----|----|----|----|----|----|----|----|----|----|----|----|----|----|----|----|----|----|

| | | | | | | | | | | | | | | | | | | | | | | | | | | | | | | | | | | | | | | | |
|---|---|---|---|---|---|---|---|---|----|----|----|----|----|----|----|----|----|----|----|----|----|----|----|----|----|----|----|----|----|----|----|----|----|----|----|----|----|----|----|
| 1 | 2 | 3 | 4 | 5 | 6 | 7 | 8 | 9 | 10 | 11 | 12 | 13 | 14 | 15 | 16 | 17 | 18 | 19 | 20 | 21 | 22 | 23 | 24 | 25 | 26 | 27 | 28 | 29 | 30 | 31 | 32 | 33 | 34 | 35 | 36 | 37 | 38 | 39 | 40 |
|---|---|---|---|---|---|---|---|---|----|----|----|----|----|----|----|----|----|----|----|----|----|----|----|----|----|----|----|----|----|----|----|----|----|----|----|----|----|----|----|

