

MEMORANDUM

DENIS CEDERBURG
Director

Department of Public Works

TO: LAURA FITZPATRICK, COUNTY TREASURER

FROM: BRIDGET RUSSO, SID COORDINATOR

SUBJECT: SID NO. 97B

DATE: February 17, 2022

On June 15, 2021, Ordinance No. 4865 levying assessments for Special Improvement District No. 97B became effective. According to NRS 271.425, the County has the authority to apportion any uncollected amounts upon land divided in an equitable manner.

The reapportionments described will not increase the principal balance of any assessment to an amount such that the aggregate amount which is assessed against a tract exceeds the minimum benefit to the tract that is estimated to result from the Project which is financed by the assessment.

See attached spreadsheets for Reapportionment No. 17.

Thank you.

BAR

District 7506 - Clark County Imp. Dist. No. - 97B
REAPPORTIONMENT NO 17 - SID 97B

FRONTAGE				
PREVIOUS APN	ASSESSED	UNASSESSED	ORIGINAL ASSESSMENT	DESCRIPTION
162-09-703-023	645	0	14,746.42	Parcel
TOTAL PREVIOUS APN	645	0	\$ 14,746.42	
TOTAL FRONTAGE	645			

FRONTAGE				
NEW APN	ASSESSED	UNASSESSED	ASSESSMENT	DESCRIPTION / LOT
162-09-703-024	645	0	\$ 14,746.42	Parcel
162-09-703-025	0	0	NA	Parcel
TOTAL NEW APN	645	0	\$ 14,746.42	
TOTAL FRONTAGE	645			

N/A: Parcel does not have frontage on Las Vegas Boulevard South, SID assessment not applicable

Per Assessment Ordinance No. 4865 Section 7 Should any lot, tract or parcel of land within the District be divided after the effective date of this Ordinance and before the collection of all the assessment installments, the Board may require the County Treasurer to apportion the uncollected amounts upon the several parts of land so divided. If two or more lots, tracts or parcels of land within the District are combined or combined and redivided into two or more different tracts after the effective date of this Ordinance and before the collection of all the assessment installments, the Board may require the County Treasurer to combine or combine and reapportion the uncollected amounts upon the part or parts of land that exist after the combination or combination and redivision.

N 2 SE 4

8	4	8	4
5	1	5	1
6	2	6	2
7	3	7	3
8	4	8	4
5	1	5	1

9

8	5	4	3	2	1
7	8	9	10	11	12
13	14	15	16	17	18
19	20	21	22	23	24
25	26	27	28	29	30
31	32	33	34	35	36

Rev: 9/28/2020

138	139	140
163	162	161
176	177	178

Scale: 1" = 200'

ASSESSOR'S PARCELS - CLARK COUNTY, NV.
 Briana Johnson - Assessor

T21S R61E

PARCEL BOUNDARY
 SUB BOUNDARY
 PMLD BOUNDARY
 ROAD EASEMENT
 MATCH / LEADER LINE
 HISTORIC SUB BOUNDARY
 HISTORIC PMLD BOUNDARY
 SECTION LINE

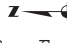
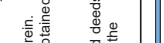
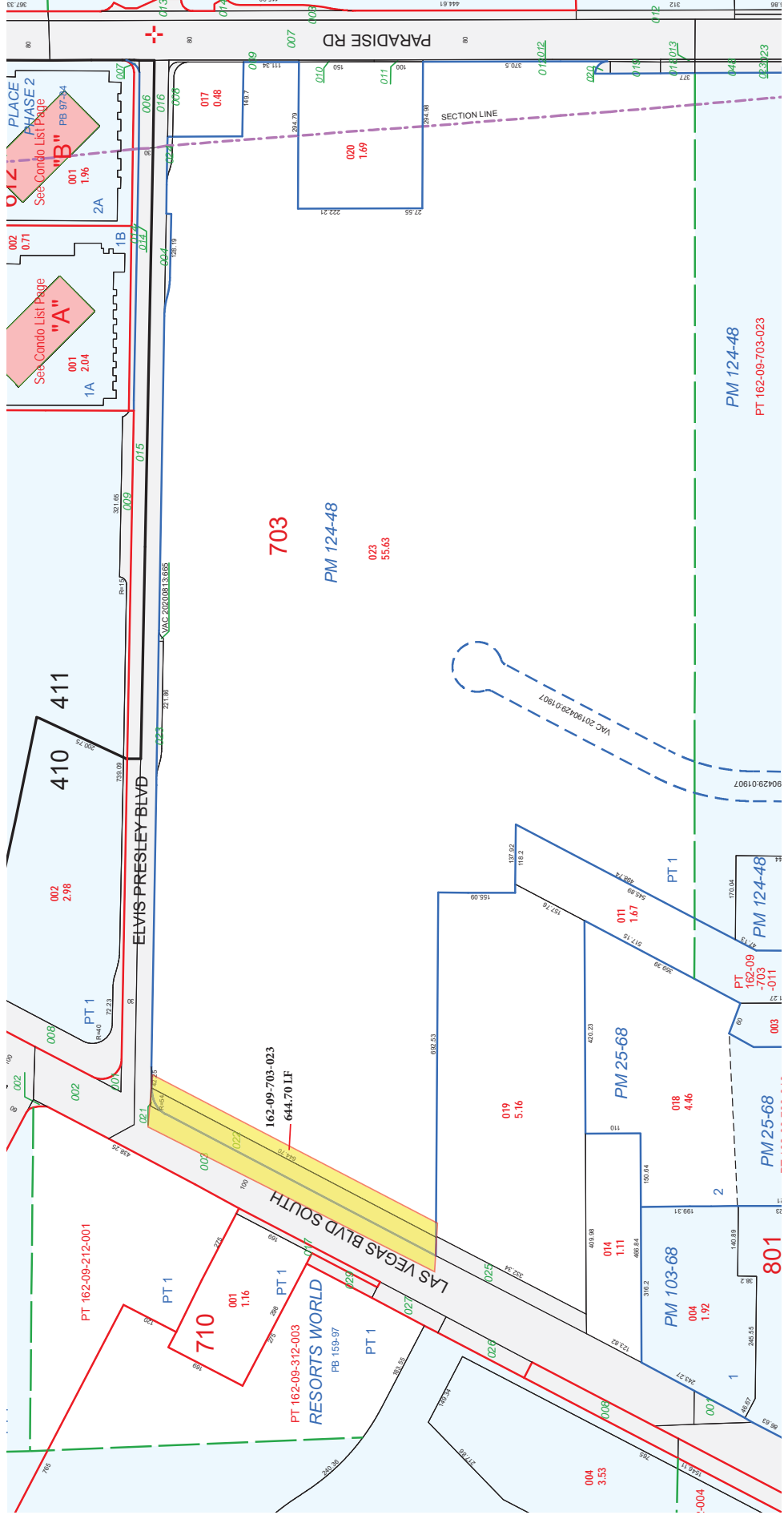
CONDOMINIUM UNIT
 AIR SPACE PCL
 RIGHT OF WAY PCL
 SUB-SURFACE PCL

007 ROAD PARCEL NUMBER
 001 PARCEL NUMBER
 1.00 ACREAGE
 202 PARCEL SUB/SEQ NUMBER
 PB 24-46 PLAT RECORDING NUMBER
 5 BLOCK NUMBER
 5 LOT NUMBER
 G.L.S. GOV. LOT NUMBER

NOTES

This map is for assessment use only and does NOT represent a survey.
 No liability is assumed for the accuracy of the data delineated herein.
 Information on roads and other non-assessed parcels may be obtained from the Road Document Listing in the Assessor's Office.
 This map is compiled from official records, including surveys and deeds, but only contains the information required for assessment. See the recorded documents for more detailed legal information.
 USE THIS SCALE(FEE) WHEN MAP REDUCED FROM 11X17 ORIGINAL

MAP LEGEND

ASSESSOR'S PARCELS - CLARK COUNTY, NV.
 Briana Johnson - Assessor

T21S R61E

9

N 2 SE 4

162-09-7



8	4	8	4
5	1	5	1
6	2	6	2
7	3	7	3
8	4	8	4
5	1	5	1

6	9	4	3	2	1
7	8	9	18	11	12
18	17	14	11	14	13
19	20	21	22	23	24
25	26	27	28	29	30
31	32	33	34	35	36

138	139	140
163	162	161
176	177	178

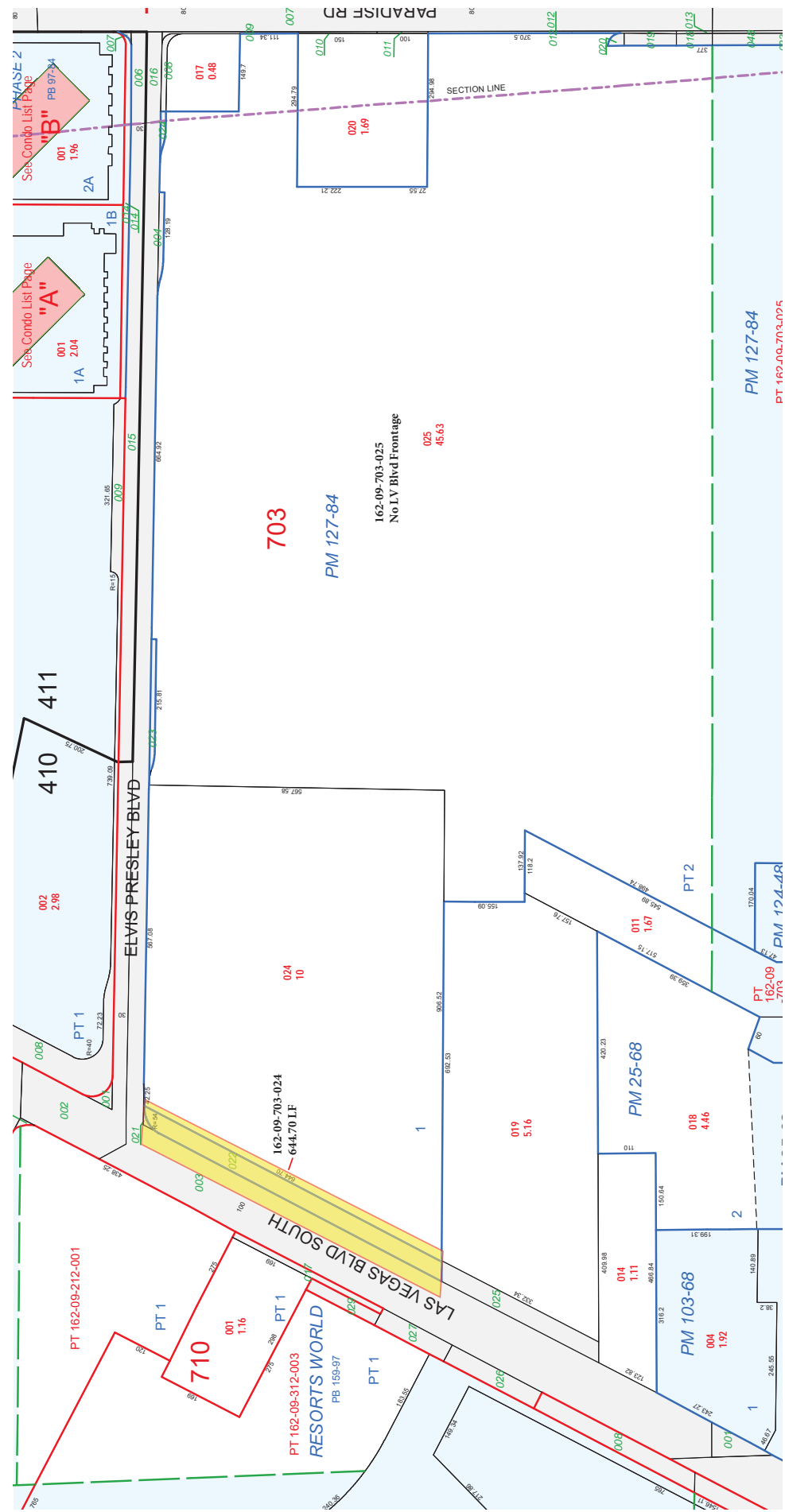
007 ROAD PARCEL NUMBER
 001 PARCEL NUMBER
 1.00 ACREAGE
 202 PARCEL SUB/SEQ NUMBER
 PB 24-46 PLAT RECORDING NUMBER
 5 BLOCK NUMBER
 5 LOT NUMBER
 G.L.S. GOV. LOT NUMBER

CONDOMINIUM UNIT
 AIR SPACE PCL
 RIGHT OF WAY PCL
 SUB-SURFACE PCL
 PARCEL BOUNDARY
 SUB BOUNDARY
 PMLD BOUNDARY
 ROAD EASEMENT
 MATCH / LEADER LINE
 HISTORIC LOT LINE
 HISTORIC SUB BOUNDARY
 HISTORIC PMLD BOUNDARY
 SECTION LINE

MAP LEGEND

NOTES

This map is for assessment use only and does NOT represent a survey.
 No liability is assumed for the accuracy of the data delineated herein.
 Information on roads and other non-assessed parcels may be obtained from the Road Document Listing in the Assessor's Office.
 This map is compiled from official records, including surveys and deeds, but only contains the information required for assessment. See the recorded documents for more detailed legal information.
 USE THIS SCALE(FEET) WHEN MAP REDUCED FROM 1:1217 ORIGINAL.



TAX DIST 411,410

New Map SID 97B Reapportionment #17 162-09-703-024 thru -025