

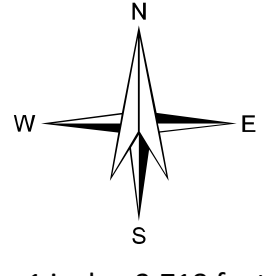
# 2024 PRIMARY EARLY VOTE COMMISSION B

**2/28/2024**  
Clark County, Nevada

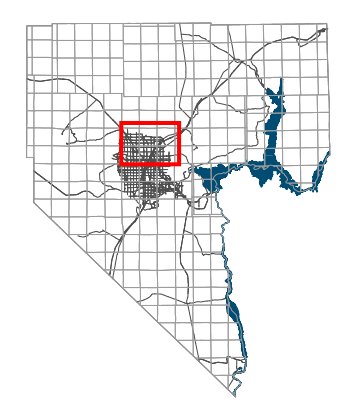


### Legend

- Long-term Early Voting Sites
  - Mobile Early Voting Sites
- COMMISSION DISTRICTS**
- B - Marilyn Kirkpatrick (D)



Date: 3/12/2024



Clark County  
Vicinity Map - No Scale

*This information is for display purposes only. No liability is assumed as to the accuracy of the data delineated herein.*