

2024 Q4 SURPLUS LAND AUCTION

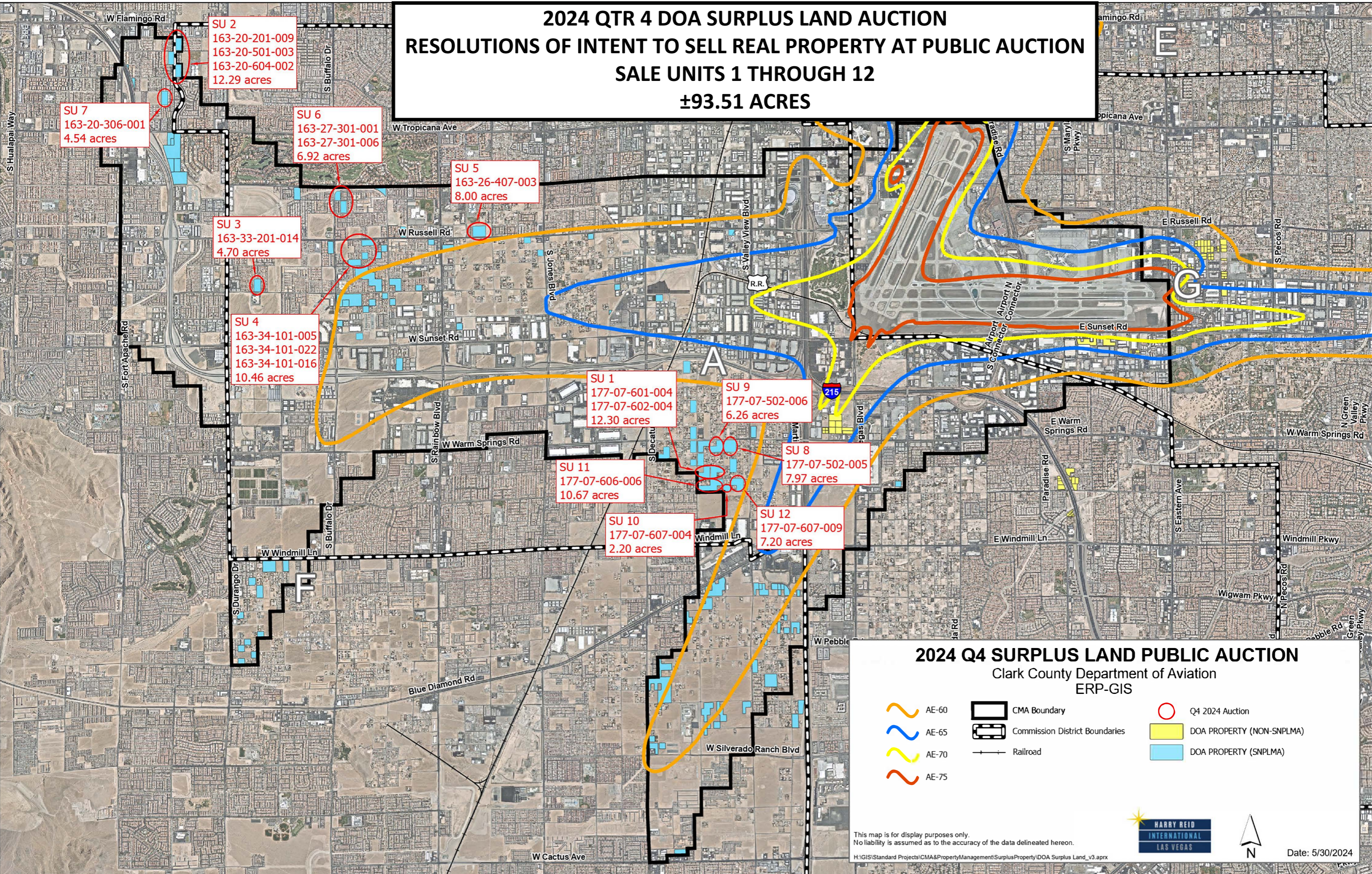
Sale Unit	Assessor's Parcel No.s	Size and General Location	Min. Price
1	177-07-601-004 177-07-602-004	±12.30 acres Arville St & Schirlls St	\$4,557,500
2	163-20-201-009, 163-20-501-003 163-20-604-002	±12.29 acres El Capitan Way & Rochelle Ave El Capitan Way & Peace Way	\$15,395,000
3	163-33-201-014	±4.70 acres near Durango Dr & Patrick Ln	\$5,330,000
4	163-34-101-005, 016, 022	±10.46 acres Russell Rd & Pioneer Way	\$12,322,500
5	163-26-407-003	±8.00 acres Russell Rd & Torrey Pines Dr	\$8,312,500
6	163-27-301-001, 006	±6.92 acres Buffalo Dr & Mesa Vista Ave	\$7,687,500
7	163-20-306-001	±4.54 acres near Peace Way & Lone Mesa Dr	\$5,687,500
8	177-07-502-005	±7.97 acres Warm Springs Rd & Hinson St	\$2,946,500
9	177-07-502-006	±6.26 acres Warm Springs Rd & Hinson St	\$2,261,000
10	177-07-607-004	±2.20 acres Robindale Rd & Hinson St	\$709,000
11	177-07-606-006	±10.67 acres Arville St & Robindale Rd	\$3,874,000
12	177-07-607-009	±7.20 acres Valley View Blvd & Robindale Rd	\$2,314,000

2024 QTR 4 DOA SURPLUS LAND AUCTION

RESOLUTIONS OF INTENT TO SELL REAL PROPERTY AT PUBLIC AUCTION

SALE UNITS 1 THROUGH 12

±93.51 ACRES



SU 2
 163-20-201-009
 163-20-501-003
 163-20-604-002
 12.29 acres

SU 7
 163-20-306-001
 4.54 acres

SU 6
 163-27-301-001
 163-27-301-006
 6.92 acres

SU 5
 163-26-407-003
 8.00 acres

SU 3
 163-33-201-014
 4.70 acres

SU 4
 163-34-101-005
 163-34-101-022
 163-34-101-016
 10.46 acres

SU 1
 177-07-601-004
 177-07-602-004
 12.30 acres

SU 9
 177-07-502-006
 6.26 acres

SU 11
 177-07-606-006
 10.67 acres

SU 8
 177-07-502-005
 7.97 acres

SU 10
 177-07-607-004
 2.20 acres

SU 12
 177-07-607-009
 7.20 acres

2024 Q4 SURPLUS LAND PUBLIC AUCTION

Clark County Department of Aviation
 ERP-GIS

- AE-60
- AE-65
- AE-70
- AE-75
- CMA Boundary
- Commission District Boundaries
- Railroad
- Q4 2024 Auction
- DOA PROPERTY (NON-SNPLMA)
- DOA PROPERTY (SNPLMA)

This map is for display purposes only.
 No liability is assumed as to the accuracy of the data delineated hereon.

H:\GIS\Standard Projects\CMA&PropertyManagement\SurplusProperty\DOA Surplus Land_v3.aprx



Date: 5/30/2024