



Sustainability & Climate Action Plan: County Operations

Board of County Commissioners

2/16/21

Meeting Objectives

1. Introduce *All-In Clark County*
2. Share key components and process outcomes of the County operations plan
3. Understand next steps for community-wide plan



Credit: Caesars Entertainment

BACKGROUND

A vertical white line is positioned to the right of the word 'BACKGROUND', extending from the top of the text to the bottom of the text.

All-In Clark County

- Clark County's action to address climate change and create a more sustainable future for all
- Reduce Clark County's contribution to climate change
- Prepare residents and businesses for climate change impacts



Definitions

A ***sustainable*** Clark County balances resource efficiency, social well-being, and environmental stewardship while equitably meeting the needs of a growing community and thriving economy.

A ***resilient*** Clark County supports residents, businesses, and visitors to be healthy, successful, and adaptable to changing climate conditions.

2 WAYS CLARK COUNTY CAN ADDRESS CLIMATE CHANGE



1 Reduce greenhouse
gas emissions



2 Prepare for impacts
of climate change

GHG Emissions

CLARK COUNTY OPERATIONAL GREENHOUSE GAS EMISSIONS (MTCO₂e)

34%



BUILDINGS
(41,127 MTCO₂e)

34%



STREETLIGHTING
(42,076 MTCO₂e)

23%



EMPLOYEE COMMUTE
(28,571 MTCO₂e)

9%



VEHICLE FLEET
(10,725 MTCO₂e)

The County is working to enhance this most recent inventory by integrating missing data and expects to have updated numbers and new proposals for improved data collection and tracking in the near future.



**CHANGING
CLIMATE
CONDITIONS:**



**WHICH LEAD
TO CLIMATE
HAZARDS:**



**RESULT IN THE
FOLLOWING DIRECT
AND INDIRECT IMPACTS:**



Temperature



Heat Waves



Precipitation



**Intense Storms
Flooding
Drought**

- Heat related illness
- Poor air quality
- Higher energy demands
- Pavement buckling

- Wildfires
- Smoke

- Infrastructure damage
- Blocked roadways
- Power outages
- Water shortages
- Crop/habitat damage

Achievements To-Date

2001	Energy Conservation Plan for County Operations
2003	Incorporation of hybrid vehicles into County fleet Adoption of County Energy Management Policy
2007	County adopts sustainability resolution
2008	Launch of County Eco-initiative
2009	County Sustainability Task Force Created
2011	Installation of solar panels at Clark County Government Center
2015	Development of Clark County Regional Greenhouse Gas Inventory Incorporation of plug-in hybrid vehicles into County fleet

Achievements To-Date

2019 Nevada joins the Climate Alliance and County joins County Climate Alliance to commit to meeting Paris Climate Agreement GHG goals

2020 Incorporation of all electric vehicles into County fleet
Sustainability Audit of County operations launched
County (DES) partners with SNRPC to update the regional GHG inventory
Kick-off of All-In Clark County

2021 All-In Clark County – Sustainability and Climate Action Plan – County Operations Complete

Achievements To-Date

30 MILES

**THE DAILY DISTANCE
THE AVERAGE CLARK
COUNTY EMPLOYEE
COMMUTES TO WORK**

In 2019, this accounted for over 23% of Clark County's greenhouse gas emissions.⁵

5 MILLION

COMMUTING MILES REDUCED TO-DATE

As a result of the four-day work week policy for Clark County, established in July 2020, not accounting for reductions from COVID-related telecommuting.

**That's equivalent
to 2,100 MTCO₂e
avoided!**



Planning Process

All-In Clark County Planning Timeline

● Phase 1 ● Phase 2 ● Ongoing

Regional Greenhouse Gas Inventory

Sustainability
Audit

County Operations
Plan

County Operations
Implementation Strategy

Community-Wide Sustainability &
Climate Action Plan

Stakeholder Engagement

2020

June 2020

2021

June 2021

2022

June 2022

Engagement

12

INTERVIEWS

6

FOCUS GROUPS

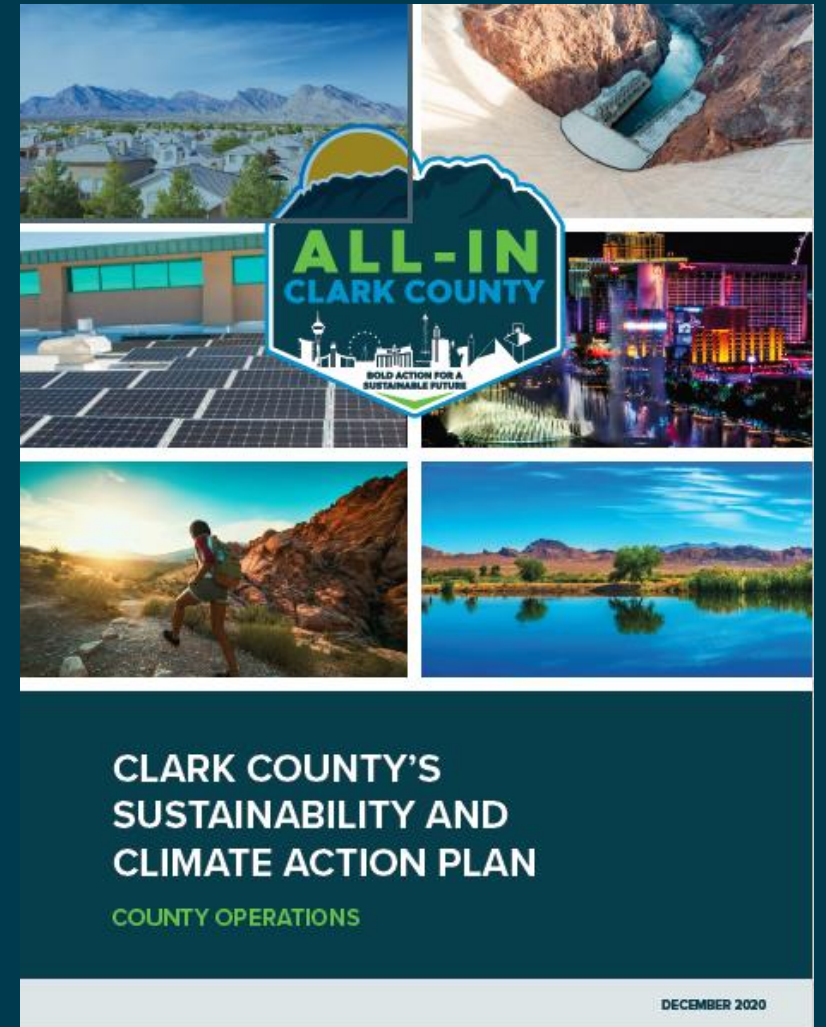
3

SURVEYS



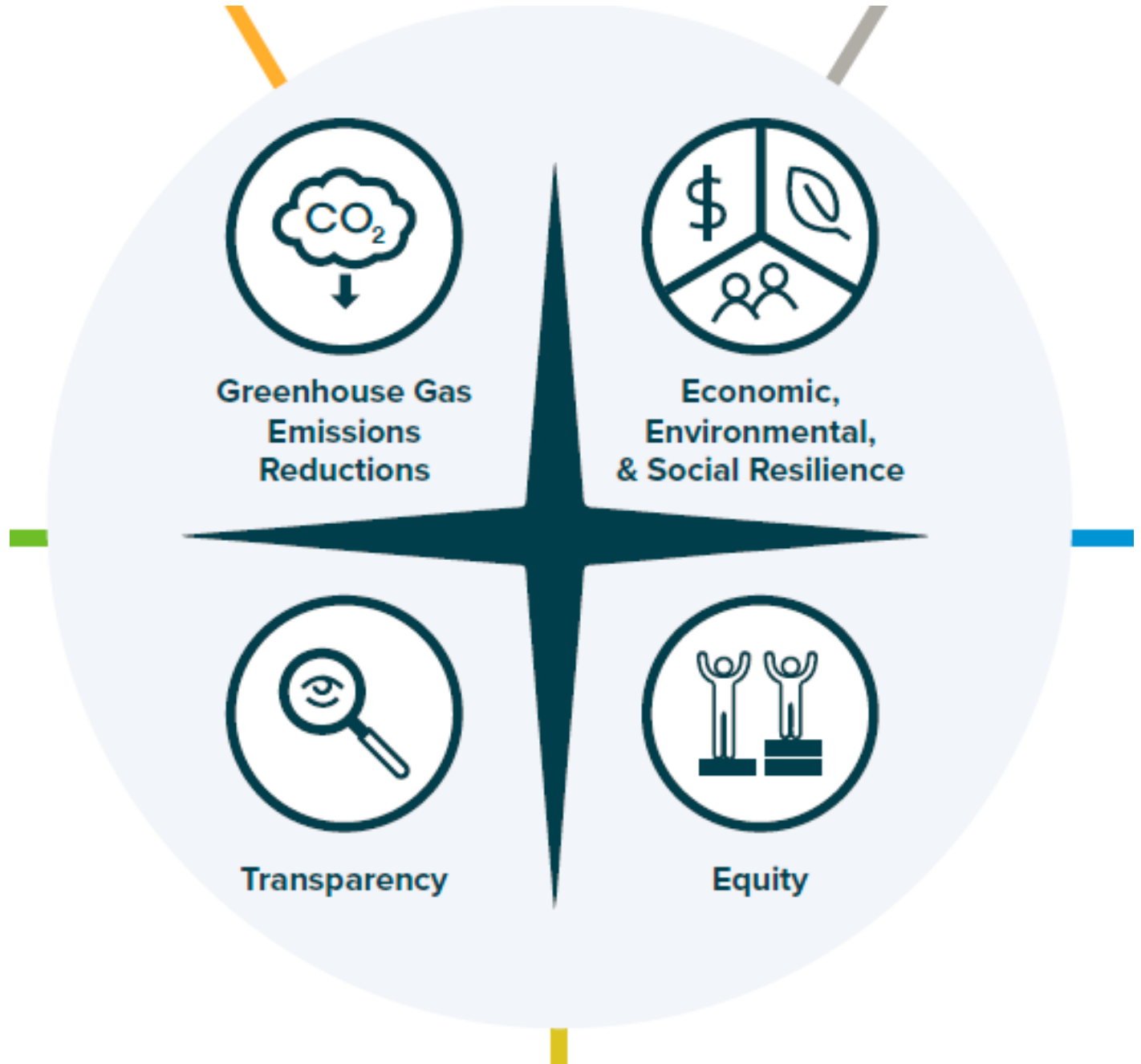
SUSTAINABILITY & CLIMATE ACTION PLAN

COUNTY OPERATIONS



Guiding Principles

- Set the foundation for goals and actions of *All-In Clark County*
- Future Clark County projects and programs will be aligned with these principles





CLEAN & RELIABLE ENERGY



RESILIENT COUNTY OPERATIONS



SMART WASTE MANAGEMENT & REDUCTION



SUSTAINABLE TRANSPORTATION



WATER CONSERVATION & PROTECTION

5

**KEY
AREAS**



CLEAN & RELIABLE ENERGY

GOALS

- Reduce energy consumption in County buildings and operations.
- Increase the use of clean, renewable energy to power County operations.
- Promote policies and programs that improve energy efficiency in residential and commercial buildings.
- Promote policies and programs that increase reliance on renewable energy sources for powering residential and commercial buildings.



RESILIENT COUNTY OPERATIONS

GOALS

- Ensure that County operations are resilient to the impacts of climate change.
- Design all Clark County-developed infrastructure to support community resilience to future climate conditions.



SMART WASTE MANAGEMENT & REDUCTION

GOALS

- Reduce generation of solid waste from County buildings and operations.
- Increase the diversion of County-generated solid waste.
- Support policies and programs that reduce residential and commercial waste throughout Clark County.



SUSTAINABLE TRANSPORTATION

GOALS

- Reduce emissions from vehicles in County operations.
- Support County employee commuting alternatives.
- Promote policies, programs, and infrastructure investments that prioritize multi-modal, clean, efficient transportation options throughout Clark County.



WATER CONSERVATION & PROTECTION

GOALS

- Decrease water consumption in County operations.
- Improve area water quality by reducing impacts from County operations.
- Support policies, programs, and regional collaboration for improved water quality, water conservation, and drought management.

METRICS AND TARGETS

To ensure the County can track its progress towards clean and efficient energy, the following metrics and targets have been identified. Note, where possible, *All-In Clark County* has aligned its metrics and targets with existing County, state, or regional plans to ensure efforts for sustainability and climate resilience are aligned.

Metric	Baseline	2030 Target	2050 Target
Total energy consumption (MMBtu) from County facilities	570,897 MMBtu (2019)	20% reduction	40% reduction
Building energy intensity (kBtu/sq ft)	207 kBtu/sq ft	25% reduction (155.25 kBtu/sq ft)	50% reduction (103.5 kBtu/sq ft)
GHG emissions from County energy consumption	67,953 MtCO ₂ e (2019)	50% reduction	Zero emissions
On-site renewable energy generation	341 kW	Upward Trend	
% of County facilities meeting energy efficient/green building standards	New Metric	Upward Trend	100%

NEXT STEPS

A thin, vertical white line is positioned to the right of the text "NEXT STEPS". It extends from approximately the middle of the text's vertical range down to about one-third of the way down the slide.

Action Prioritization



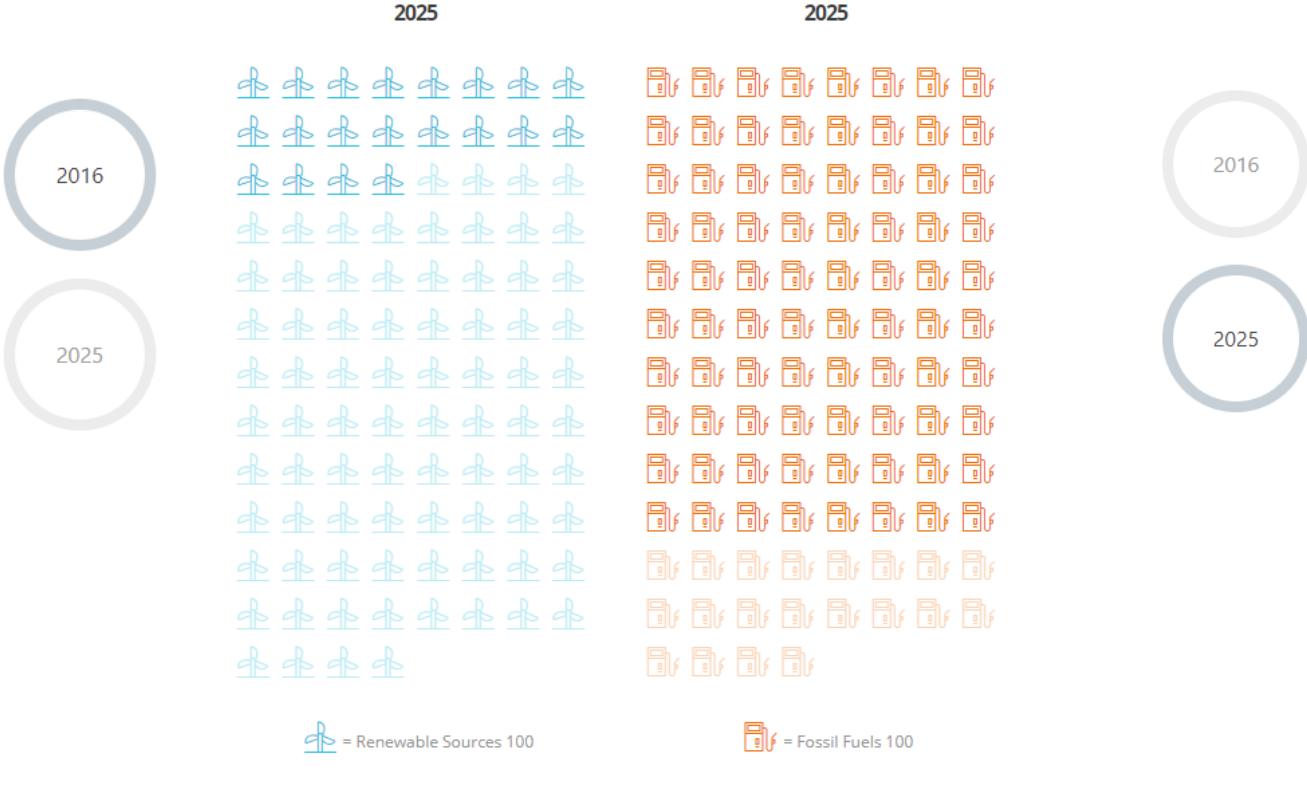
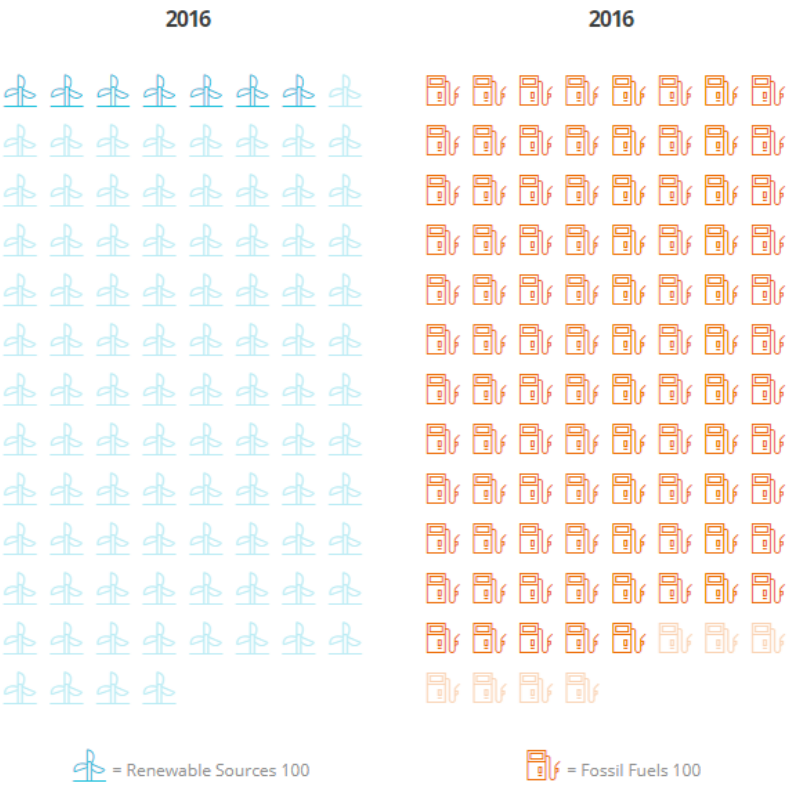
ACTIONS	<div> ● Favorable ● Neutral ● Unfavorable </div>	GHG Reduction Potential	INCREASED RESILIENCE			Transparency	Equity Considerations
			Social	Economic	Built Environment		
Staff an energy management team for all County facilities and operations.		●	●	●	●	●	●
Continue to upgrade all lighting in County buildings to LED.		●	●	●	●	●	●
Assess the need to expand outdoor lighting control systems (sensors, timers) to all exterior lighting.		●	●	●	●	●	●
Continue to implement energy conservation measures for the highest energy intensity County buildings and continue to conduct energy audits on other high energy intensity buildings.		●	●	●	●	●	●
Establish an employee energy awareness and conservation program.		●	●	●	●	●	●

Dashboard: Data Tracking



Renewable Energy

Renewable Energy Goal

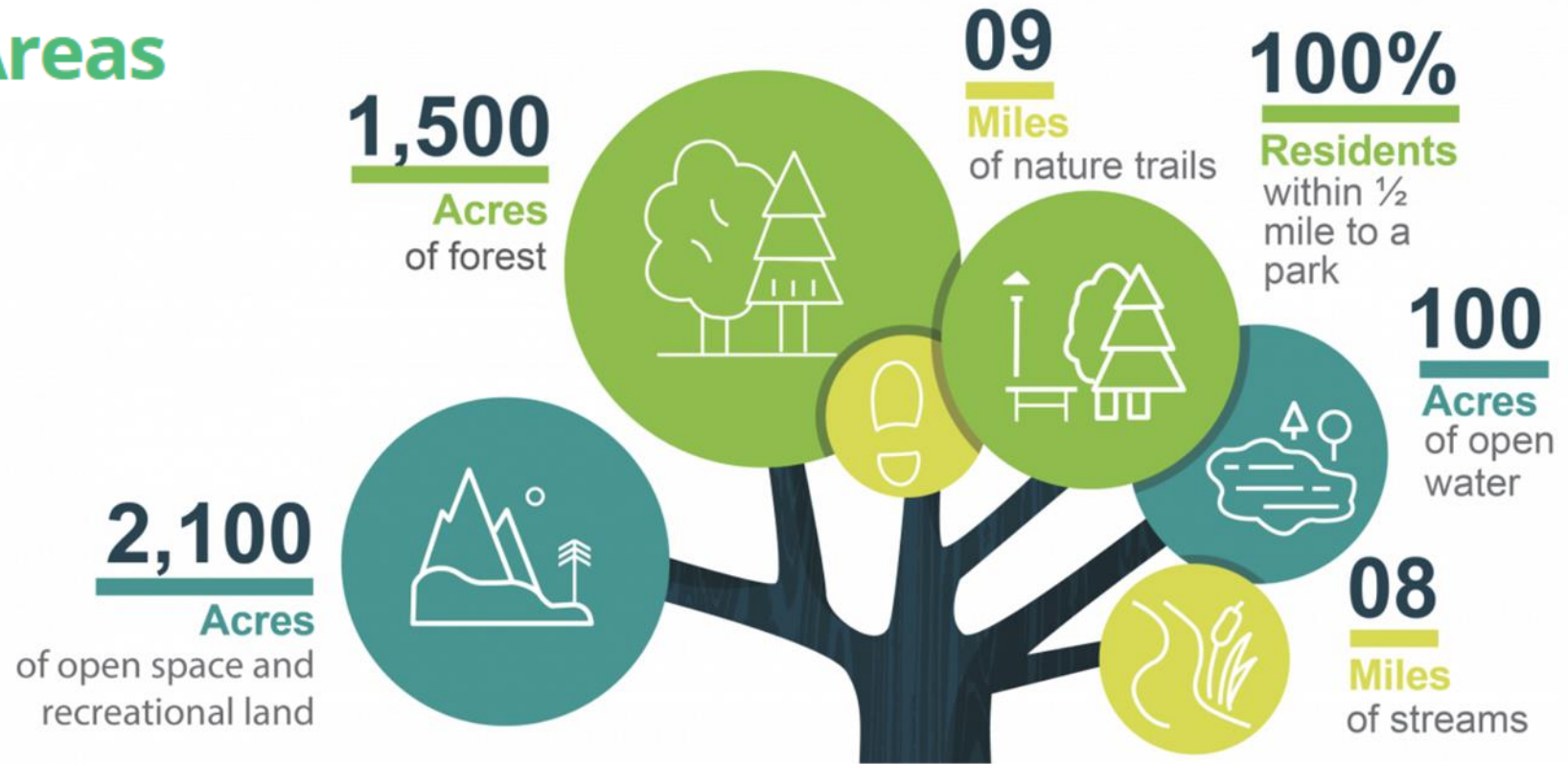


Dashboard: Data Tracking



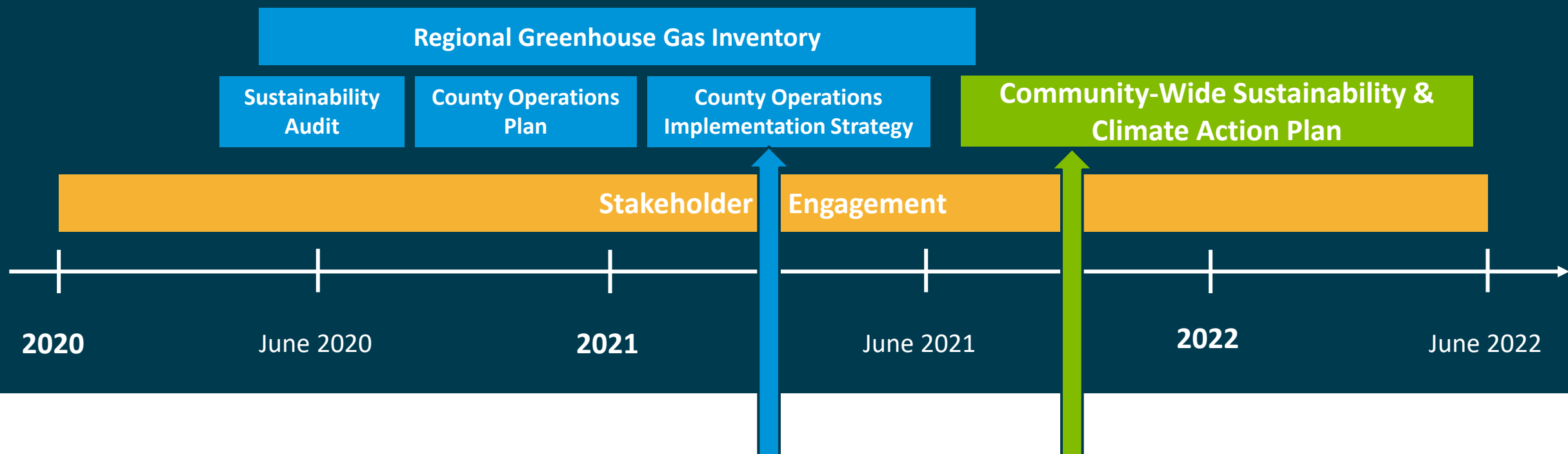
Open Space

Our Natural Areas



All-In Clark County Planning Timeline

● Phase 1 ● Phase 2 ● Ongoing



Phase 1, cont'd: County Operations Plan Implementation Strategy

Phase 2: Community-Wide Sustainability & Climate Action Plan

Thank You!

