

2024 PRIMARY EARLY VOTE COMMISSION G

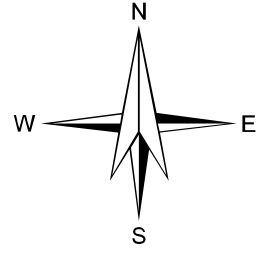
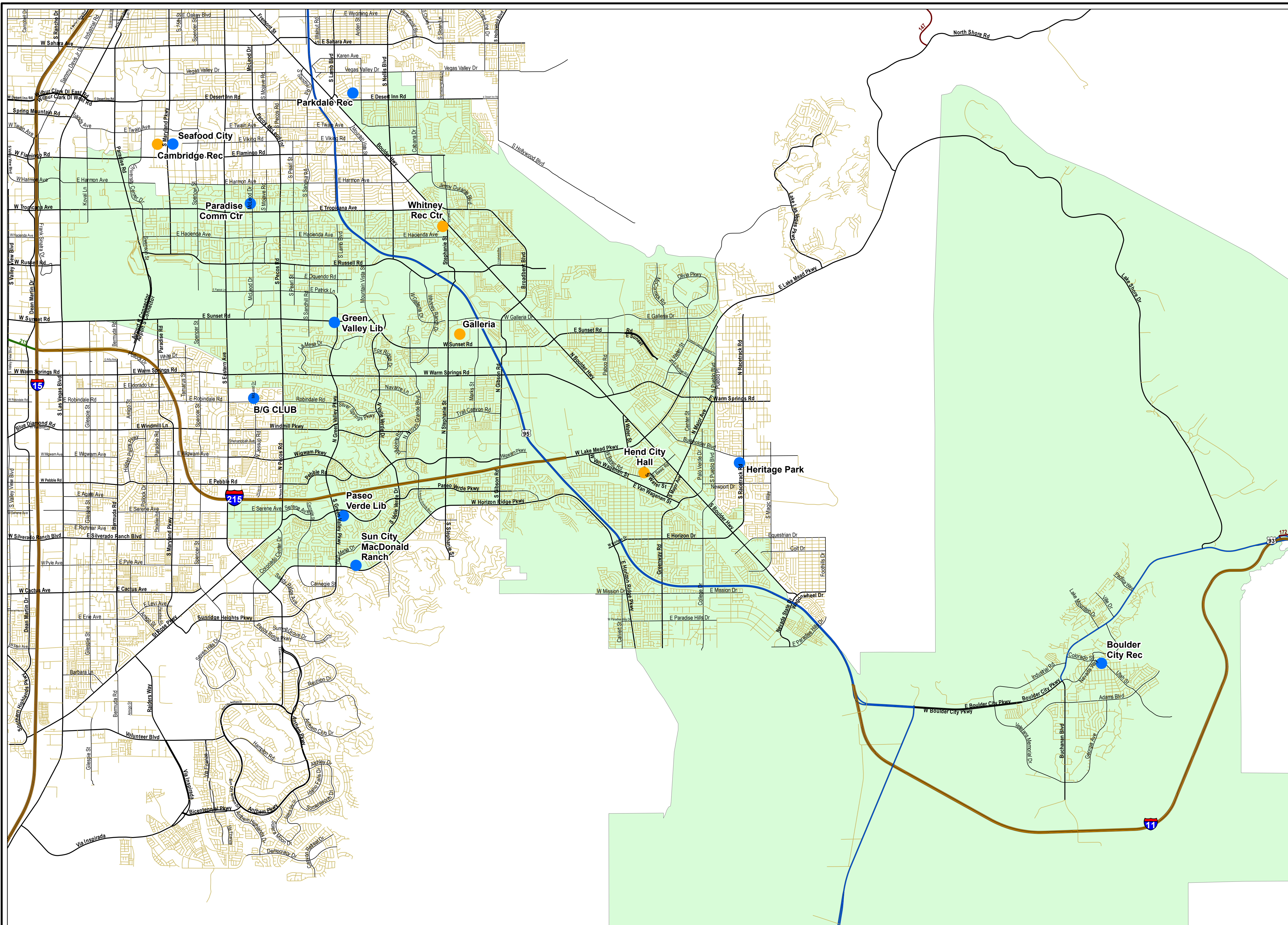
2/28/2024
Clark County, Nevada

**ELECTION
DEPARTMENT**

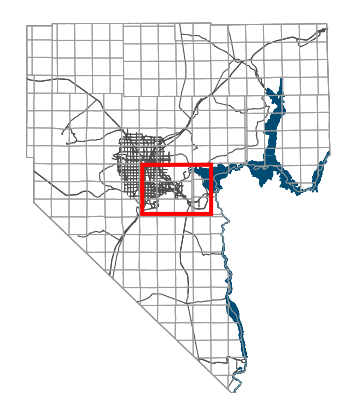


Legend

- Long-term Early Voting Sites
 - Mobile Early Voting Sites
- COMMISSION DISTRICTS**
- G - Jim Gibson (212,020)



1 inch = 4,433 feet
Date: 3/9/2024



Clark County
Vicinity Map - No Scale

This information is for display purposes only. No liability is assumed as to the accuracy of the data delineated herein.