




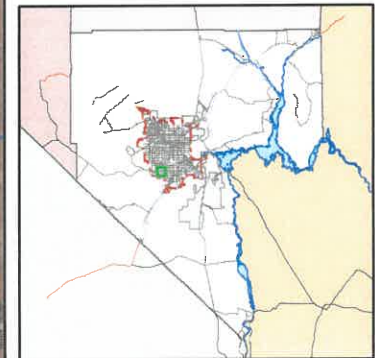


Comprehensive Planning BLM Sale Nominations

Map 4 ~ 176-13,23,26,27

176-13-101-014,
176-13-601-032 (Portion),
176-23-601-017 (Portion) and
176-23-599-001 (Portion),
176-26-201-004 and
176-26-401-006 (Portion),
176-27-101-031 (Portion)

-  BLM Sale Nominations
-  Assessors Parcels
-  Book Boundaries
-  Section Boundaries
-  Land Disposal Boundary



Map created on : March 16, 2021

*This information is for display purposes only.
No liability is assumed as to the accuracy of the data delineated hereon.*

