

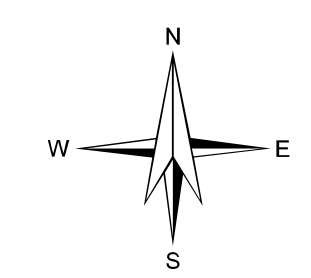
# 2024 GENERAL EARLY VOTE COMMISSION B

**2/29/2024**  
Clark County, Nevada

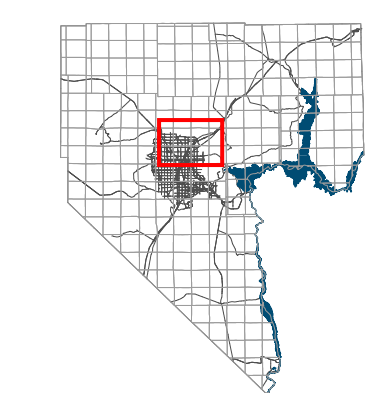


### Legend

- TEAM**
- Long-term Early Voting Sites
  - Mobile Early Voting Sites
- COMMISSION DISTRICTS**
- B Marilyn Kirkpatrick(209,757)



1 inch = 3,859 feet  
Date: 3/12/2024



Clark County  
Vicinity Map - No Scale

This information is for display purposes only. No liability is assumed as to the accuracy of the data delineated herein.