



togetherforbetter

CLARK COUNTY REHABILITATION CENTER

Board of County Commissioners Presentation



CONTENTS

01	PROJECT OVERVIEW	03
02	DESIGN CONCEPT: SOUL	10
03	DESIGN CONCEPT: CROSSING	20
04	PROGRAM ANALYSIS.....	31



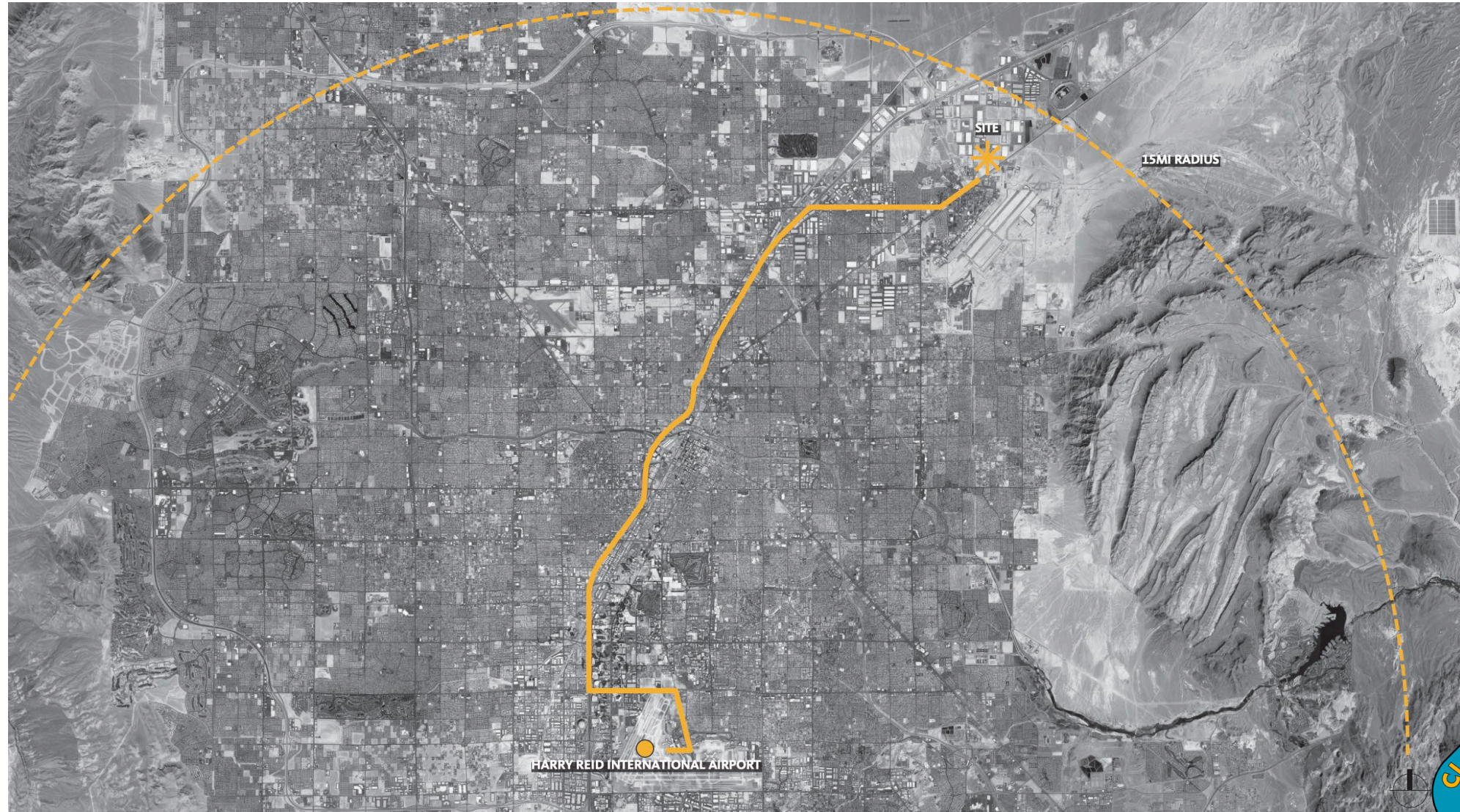
01 PROJECT OVERVIEW



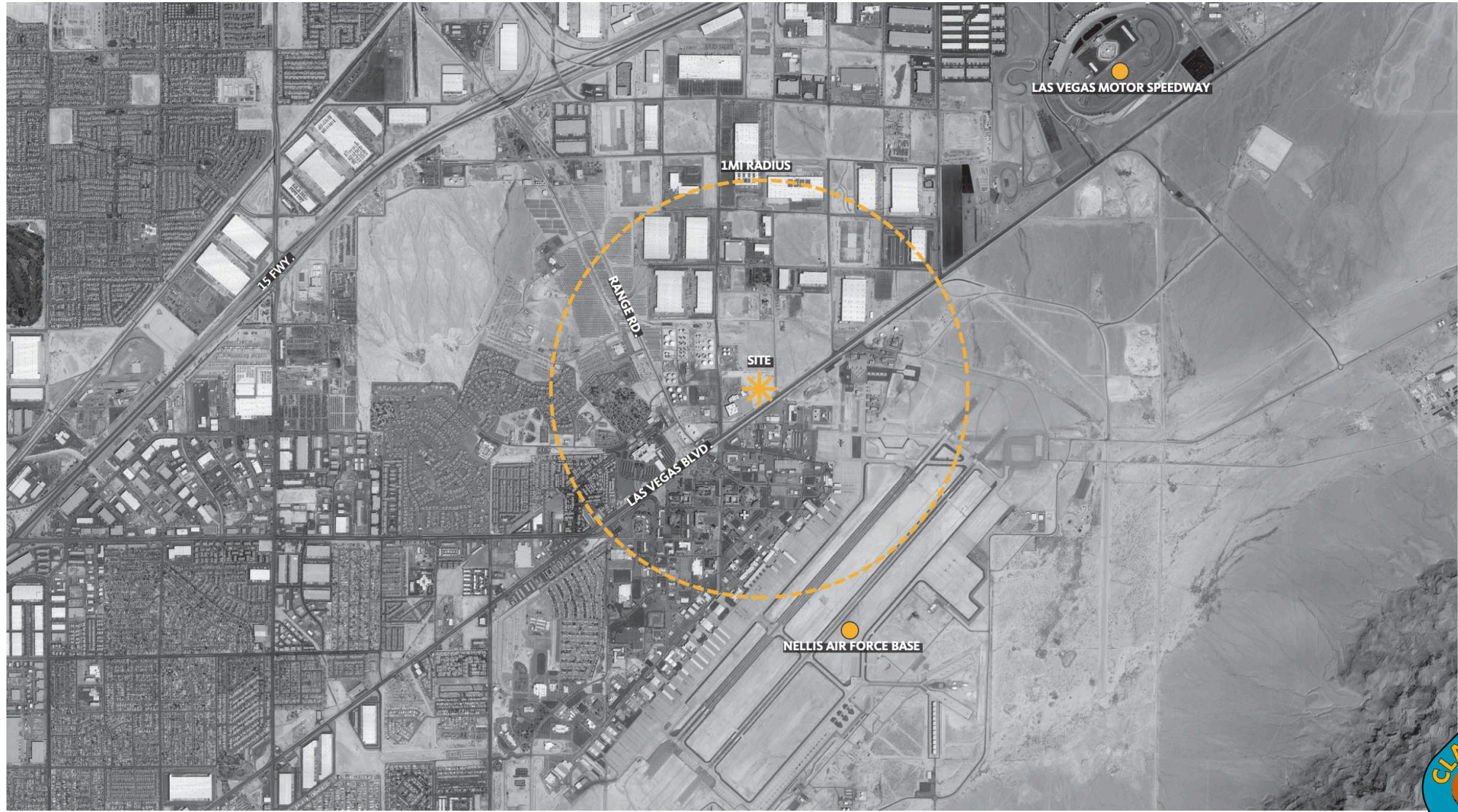
togetherforbetter

CONNECTIVITY

APPROX. 40MIN DRIVE (24.5MI) FROM HARRY REID INTERNATIONAL AIRPORT



VICINITY MAP



VIEW CORRIDORS AND VEHICULAR ACCESS POINTS



EXISTING SITE IMAGES | GROUND VIEWS

VIEW ALONG SLOAN LN. LOOKING EAST



VIEW ALONG LAS VEGAS BLVD. LOOKING NORTH



VIEW ALONG BEASLEY DR. LOOKING WEST



VIEW ALONG LAS VEGAS BLVD. LOOKING SOUTH



EXISTING SITE IMAGES | AERIAL VIEWS

SOUTHWEST



NORTHWEST



SOUTHEAST



NORTHEAST



OVERALL PROGRAM

Residential Program: 240 Beds Total:

- Detox (48 Beds Total).
- 30-Day Stay (96 Beds Total).
- 90-Day Stay (64 Beds Total).
- 6-Month Stay (32 Beds Total).

Support Program:

- Administration.
- Welcome & Family Center.
- Wellness/Renewal Center.
- Building Support.
- Outdoor Amenities.

Designs will include the opportunity for a Donor Wall.

GOALS

Clark County has initiated the process to create a Rehabilitation Center on existing County owned property. This 240-bed facility will provide care for individuals at all levels of care needed from initial de-detoxification to long -term stability. This program for design will establish the requirements for this project. The Project Goals are qualitative statements regarding the essence of the project, what it is to achieve and the why's. They become the overriding premises that all decisions spring from.

- Create a community of care and recovery, while establishing organizational clarity.
- Instill dignity at all levels, along with a welcoming and belonging to all.
- Promote investigation of all pathways to recovery. With an approach rooted in personal focused care.
- Build resilience in all who come here for care by re-igniting a direction of hope and purpose.

PROJECT VISION

An Urgent Need now and into the future.

The County is lacking in this service- especially 6 month term vs stabilize & move them on

A nice place to be.

Instill dignity at all levels along with a welcoming and belonging to all.

Confidence inspiring.

Build resilience in all who come here for care by re-igniting a direction of hope and purpose

Sustainably delivered.

Beat energy code minimum by 20% + LEED Silver EQ

Program Driven.

Promote investigation of all pathways to recovery with an approach rooted in personal focused care



02 DESIGN CONCEPT SOUL



togetherforbetter

SOUL

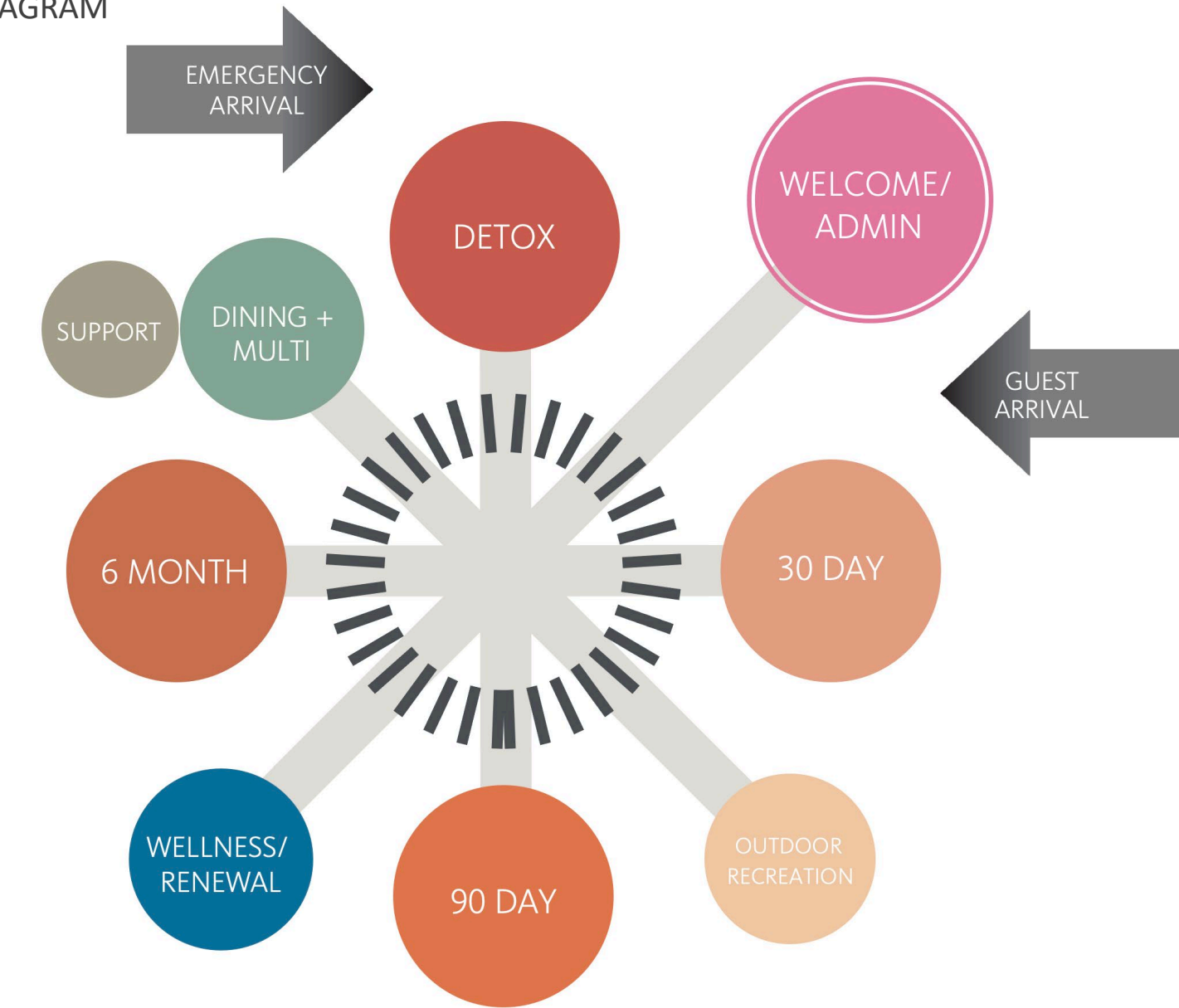
Central focus of gathering and interaction, a fundamental notion on having a central **soul** to the organization

Everyone has a designated path to follow from a single primary point of entry

Each care area is located around a central courtyard, with access based upon length of stay rotating around the space



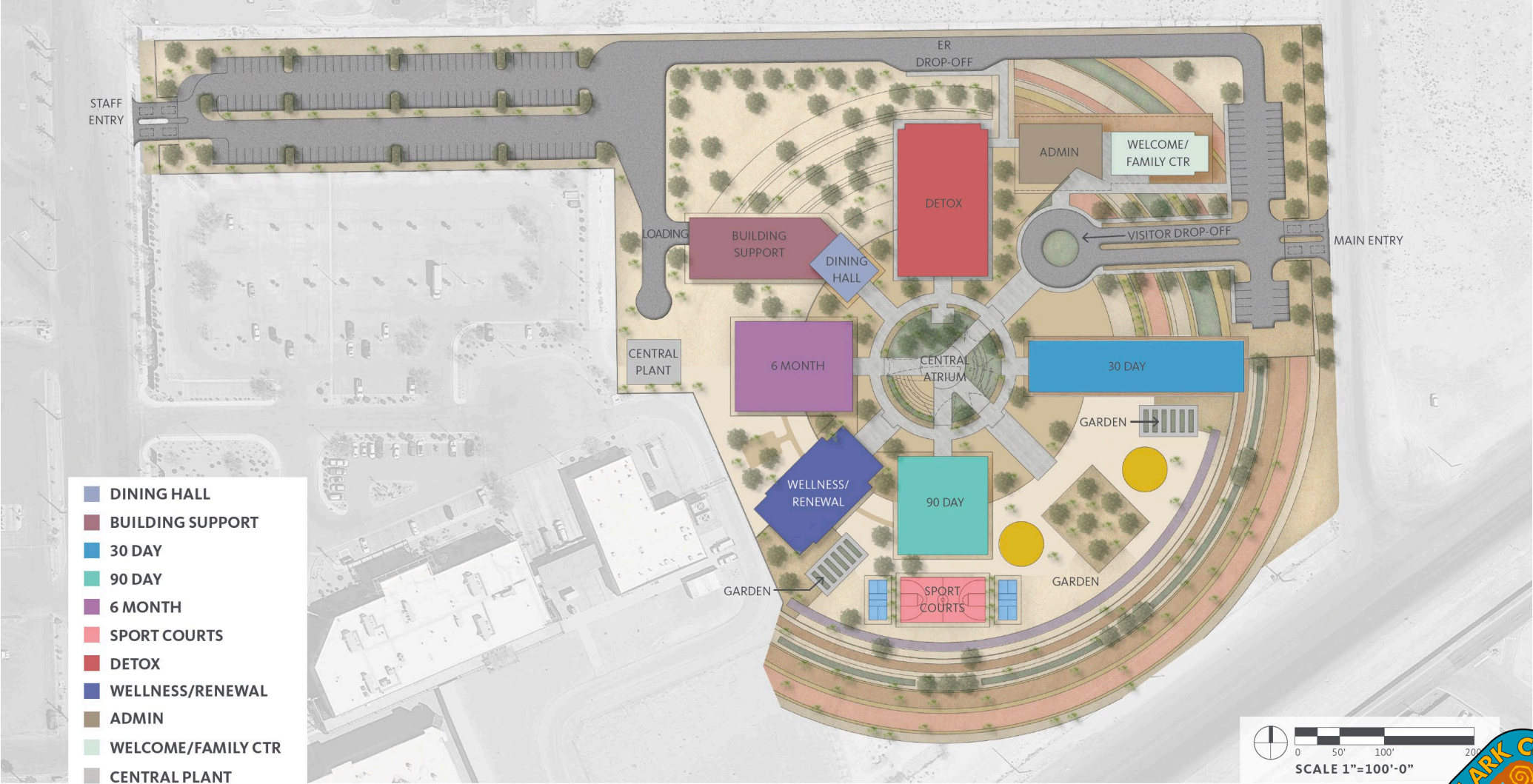
SOUL | PROGRAM DIAGRAM



SOUL | DESIGN INSPIRATION



SOUL | SITE PLAN



SOUL | OVERALL AERIAL VIEW



SOUL | ARRIVAL VIEW





SOUL | ATRIUM VIEW



SOUL | ADMINISTRATION INTERIOR VIEW





03 DESIGN CONCEPT CROSSING



togetherforbetter

CROSS↑ING

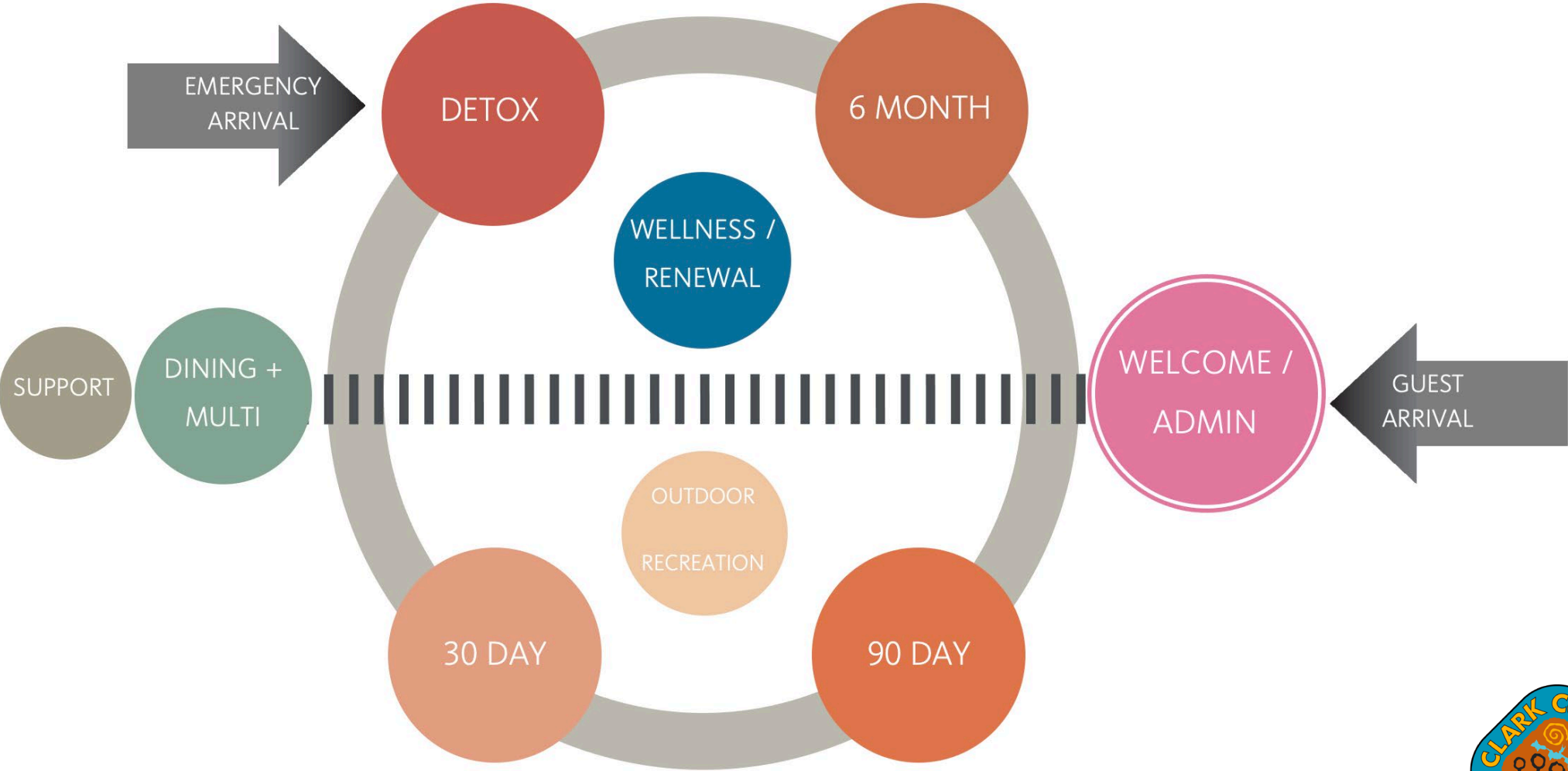
Each program in the community promotes motion, **crossing** to new growth and opportunities through healing.

Movement of buildings provide multiple opportunities for private reflection, small gathering spaces, and large recreational zones.

Encourages self-intuitive movement and discovery, helping occupants **cross** into their future.



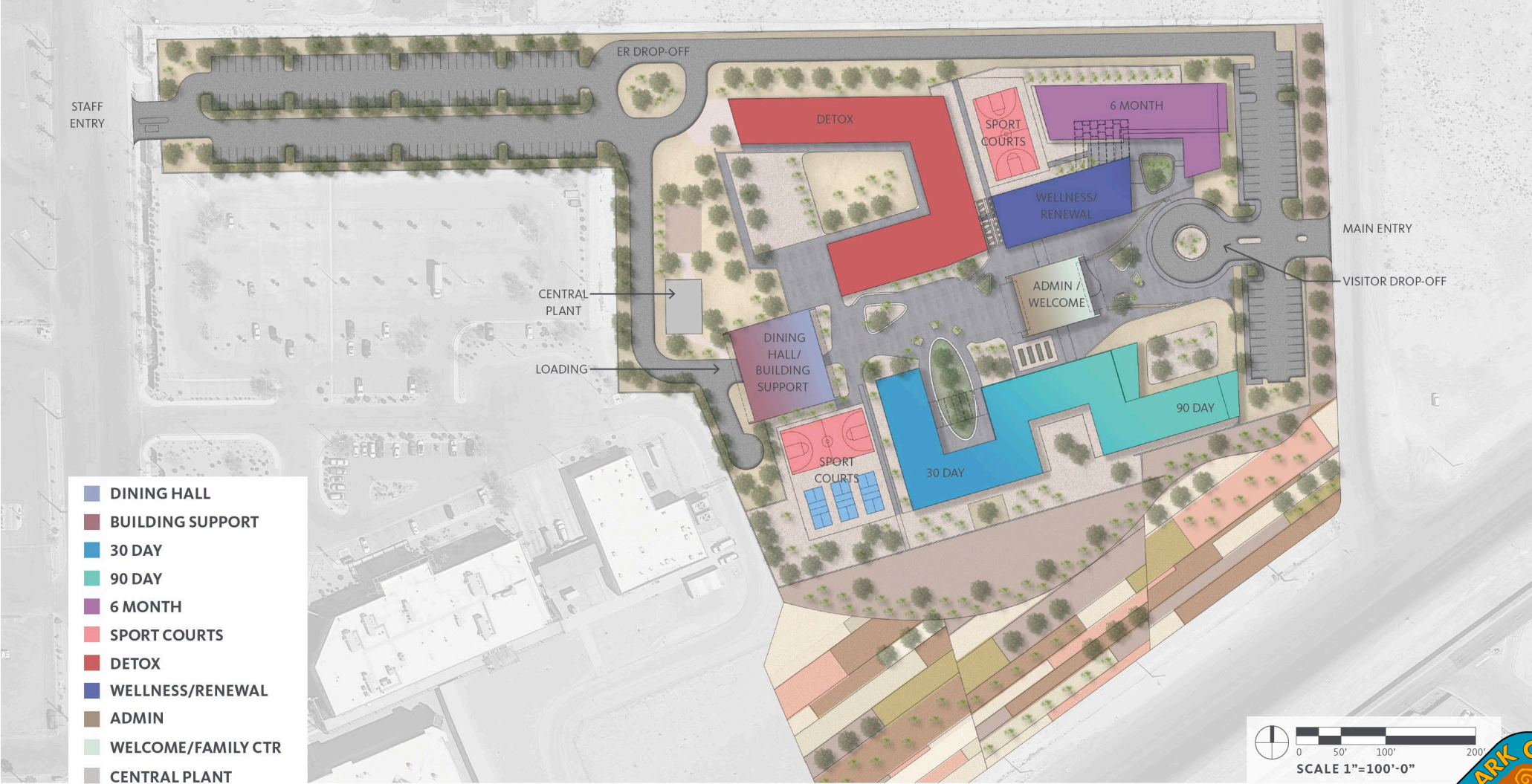
CROSSING | PROGRAM DIAGRAM



CROSSING | DESIGN INSPIRATION



CROSSING | SITE PLAN



CROSSING | OVERALL AERIAL



CROSSING | ARRIVAL VIEW



CROSSING | ADMIN/90 DAY COURTYARD VIEW



CROSSING | 6 MONTH/ADMIN COURTYARD VIEW



CROSSING | BUILDING SUPPORT/DINING HALL COURTYARD VIEW



CROSSING | ADMINISTRATION INTERIOR VIEW





04 PROGRAM ANALYSIS



togetherforbetter

PRELIMINARY PROGRAM FOR DESIGN

OVERALL PROGRAM AREA SUMMARY

OVERALL PROGRAM AREA SUMMARY					
SPACE	DNSF SIZE	COMPOSITION	BEDS		%
MALE DETOX	7,156	2 – 12 Bed Units	24	48	20.0%
FEMALE DETOX	7,156	2 – 12 Bed Units	24		
MALE 30 DAY STAY	11,478	3 – 16 Bed Units	48	96	40.0%
FEMALE 30 DAY STAY	11,478	3 – 16 Bed Units	48		
MALE 90 DAY STAY	7,820	2 – 16 Bed Units	32	64	26.7%
FEMALE 90 DAY STAY	7,820	2 – 16 Bed Units	32		
MALE 6 MONTH STAY	7,554	1 – 16 Bed Unit with extended living components	16	32	13.3%
FEMALE 6 MONTH STAY	7,554	1 – 16 Bed Unit with extended living components	16		
WELLNESS/RENEWEL CENTER	7,540			240	
WELCOME/FAMILY CENTER	3,720				
ADMINISTRATION	4,630				
BUILDING SUPPORT	9,630				
TOTAL DNSF	93,536				
X 1.35 N/G Factor	32,738				
BUILDING DGSF	126,274				
X 1.20 DGSF to BGSF	25,255				
TOTAL BUILDING AREA	151,528				

DNSF: DEPARTMENTAL NET SQUARE FEET

DGSF: DEPARTMENTAL GROSS SQUARE FEET

BGSF: BUILDING GROSS SQUARE FEET



PRELIMINARY PROGRAM FOR DESIGN

AREA BREAKDOWN: DETOX

DETOX					
Male Detox (2 – 12Bed Units)					
Space	NSF	Quantity	Total NSF	Notes	Beds
Resident Room (Single)	273	12	3,276	Includes Toilet/Shower	12
Control Station	200	2	400	Visual Control of Lounge	
Office	120	2	240		
Med Room	120	2	240	Secure Room	
General Storage	120	2	240	For unit equipment	
Hskp/Linen	120	2	240	Linen for room turnover supplies	
Dining/Group Lounge	600	2	1,200		
Counseling Room	160	4	640	Adjacent Lounge	
Exam Room	120	2	240	Adjacent Control Station	
Entry Vestibule	100	2	200	Secure entry	
Crash/Hold Room	120	2	240	Patient Assessment	
TOTAL NSF			7,156		
Female Detox (2 – 12 Bed Units)					
Space	NSF	Quantity	Total NSF	Notes	Beds
Resident Room (Single)	273	12	3,276	Includes Toilet/Shower	12
Control Station	200	2	400	Visual Control of Lounge	
Office	120	2	240		
Med Room	120	2	240	Secure Room	
General Storage	120	2	240		
Hskp/Linen	120	2	240	Linen supplies for room turnover	
Dining/Group Lounge	600	2	1,200		
Counseling Room	160	4	640	Adjacent Lounge	
Exam Room	120	2	240	Adjacent Control Station	
Entry Vestibule	100	2	200	Secure entry	
Crash/Hold Room	120	2	240	Patient Assessment	
TOTAL NSF			7,156		24

NSF: NET SQUARE FEET



PRELIMINARY PROGRAM FOR DESIGN

AREA BREAKDOWN: 30 DAY STAY

30-DAY STAY (96 BEDS)					
Male 30-Day Stay (3 – 16 Bed Units)					
Space	NSF	Quantity	Total NSF	Notes	Beds
Resident Room (Double)	273	12	3,276		24
Resident Room (Quad)	462	6	2,772		24
Control Station	200	3	600	Visual Control of Lounge	
Office	120	3	360		
Med Room	120	3	360	Secure Room	
General Storage	120	3	360		
Hskip/Linen	120	3	360	Linen supplies for Unit	
Dining/Group Lounge/Common Rest Rooms	750	3	2,250	Rest Rooms/2 WC/2 U/2 Showers	
Counseling Room	160	3	480	Adjacent Lounge	
Exam Room	120	3	360	Adjacent Control Station	
Entry Vestibule	100	3	300	Secure entry	
TOTAL NSF			11,478		
Female 30- Day Stay (3 – 16 Bed Units)					
Space	NSF	Quantity	Total NSF	Notes	Beds
Resident Room (Double)	273	12	3,276		24
Resident Room (Quad)	462	6	2,772		24
Control Station	200	3	600	Visual Control of Lounge	
Office	120	3	360		
Med Room	120	3	360	Secure Room	
General Storage	120	3	360		
Hskip/Linen	120	3	360	Linen supplies for Unit	
Dining/Group Lounge/Common Rest Rooms	750	3	2,250	Rest Rooms/2 WC/2 U/2 Showers	
Counseling Room	160	3	480	Adjacent Lounge	
Exam Room	120	3	360	Adjacent Control Station	
Entry Vestibule	100	3	300	Secure entry	
TOTAL NSF			11,478		96

NSF: NET SQUARE FEET



PRELIMINARY PROGRAM FOR DESIGN

AREA BREAKDOWN: 90 DAY STAY

90-DAY STAY					
Male 90- Day Stay (2- 16 Bed Unit)					
Space	NSF	Quantity	Total NSF	Notes	Beds
Resident Room (Double)	273	12	3,276	24 Beds	24
Resident Room (Quad)	462	2	924	8 beds	8
Control Station	200	2	400	Visual Control of Lounge	
Office	120	2	240		
Med Room	120	2	240	Secure Room	
General Storage	120	2	240		
Hskp/Linen	120	2	240	Linen supplies for unit	
Dining/Group Lounge/Common Rest Rooms	750	2	1,500	Rest Rooms/2 WC/2 U/2 Showers	
Counseling Room	160	2	320	Adjacent Lounge	
Exam Room	120	2	240	Adjacent Control Station	
Entry Vestibule	100	2	200	Secure entry	
TOTAL NSF			7,820		
Female 90-Day Stay (2 - 16 Bed Unit)					
Space	NSF	Quantity	Total NSF	Notes	Beds
Resident Room (Double)	273	12	3,276	12 beds	24
Resident Room (Quad)	462	2	924	4 beds	8
Control Station	200	2	400	Visual Control of Lounge	
Office	120	2	240		
Med Room	120	2	240	Secure Room	
General Storage	120	2	240		
Hskp/Linen	120	2	240	Linen supplies for unit	
Dining/Group Lounge/Common Rest Rooms	750	2	1,500	Rest Rooms/2 WC//2 Showers	
Counseling Room	160	2	320	Adjacent Lounge	
Exam Room	120	2	240	Adjacent Control Station	
Entry Vestibule	100	2	200	Secure entry	
TOTAL NSF			7,820		64

NSF: NET SQUARE FEET



PRELIMINARY PROGRAM FOR DESIGN

AREA BREAKDOWN: 6 MONTH STAY

6-MONTH STAY					
Male 6 Month Stay (1 - 16 Bed Unit with extended living components)					
Space	NSF	Quantity	Total NSF	Notes	Beds
Resident Room (Double)	273	8	2,184		16
Resident Room (Quad)	462	0	0		0
Control Station	200	2	400	Visual Control of Lounge	
Office	120	2	240		
Med Room	120	2	240	Secure Room	
General Storage	120	2	240		
Hskp/Linen	120	2	240	Linen supplies for Unit	
Dining/Group Lounge/Common Rest Rooms	750	2	1,500	Rest Rooms/2 WC/2 U/2 Showers	
Daily Living Skills	500	2	1,000	Prep Kitchen/Laundry	
Counseling Room	160	2	320	Adjacent Lounge	
Exam Room	120	2	240	Adjacent Control Station	
Entry Vestibule	100	2	200	Secure entry	
Kitchen/Laundry/ADL	750	1	750	Apartment sized facilities	
TOTAL NSF			7,554		
Female 6 Month Stay (1 - 16 Bed Unit with extended living components)					
Space	NSF	Quantity	Total NSF	Notes	Beds
Resident Room (Double)	273	8	2,184		16
Resident Room (Quad)	462	0	0		0
Control Station	200	2	400	Visual Control of Lounge	
Office	120	2	240		
Med Room	120	2	240	Secure Room	
General Storage	120	2	240		
Hskp/Linen	120	2	240	Linen supplies for Unit	
Dining/Group Lounge/Common Rest Rooms	750	2	1,500	Rest Rooms/2 WC//2 Showers	
Daily Living Skills	500	2	1,000	Prep Kitchen/Laundry	
Counseling Room	160	2	320	Adjacent Lounge	
Exam Room	120	2	240	Adjacent Control Station	
Entry Vestibule	100	2	200	Secure entry	
Kitchen/Laundry/ADL	750	1	750	Apartment sized facilities	
TOTAL NSF			7,554		32

NSF: NET SQUARE FEET



PRELIMINARY PROGRAM FOR DESIGN

AREA BREAKDOWN: WELLNESS/RENEWAL CENTER & WELCOME/FAMILY CENTER

Wellness/Renewal Center				
Space	NSF	Quantity	Total NSF	Notes
Meeting Room	400	4	1,600	For group sessions
Conference Room	200	2	400	Primarily for Staff use
Pre-Meeting Lounge	400	1	400	
Reception/Control Center	400	1	400	Visual Control of Entry/Mtg
Office	120	3	360	
Support	200	1	200	Staff Room
Storage	100	1	100	
Toilet Room	80	6	480	Residents
Toilet Room	80	2	160	Staff
Assessment Testing	120	2	240	
Vestibule	100	1	100	
Craft Room	400	4	1,600	2 Devoted to skills renewal.
Exercise Rooms	400	2	800	
Equipment Storage	200	1	200	
Entry Reception	100	1	100	
Meditation	200	2	400	
TOTAL NSF			7,540	

Welcome/Family Center				
Space	NSF	Quantity	Total NSF	Notes
Family Lobby/Waiting	400	1	400	
Reception/Control Center	200	1	200	Visual Control of Entry/Mtg
Library/Gallery	200	1	200	
Pre-Family Lounge	400	2	800	
Family Room	200	4	800	
Office	150	4	600	Counselors
Toilets Room	80	4	320	Public/Residents
Meditation	200	2	400	
TOTAL NSF			3,720	

NSF: NET SQUARE FEET



PRELIMINARY PROGRAM FOR DESIGN

AREA BREAKDOWN: BUILDING SUPPORT AND ADMINISTRATION

Building Support				
Space	NSF	Quantity	Total NSF	Notes
Materials Management	2000	1	2,000	
Dining Hall w/ Commercial Kitchen	3000	1	3,000	Includes Shared Dining Space
Storage	0	2	0	Part of Common Maintenance BLD
Custodial	0	1	0	Part of Common Maintenance BLD
Linen	750	1	750	
Security	500	1	500	
Records Storage	500	3	1,500	Secure file storage
Receiving	200	1	200	Building Dock
Offices	0	0	0	Part of Common Maintenance BLD
Lab	240	1	240	
Pharmacy	240	1	240	
Pantry	600	1	600	
Exam Rooms	120	3	360	
Dental Rooms	120	2	240	
Facility Maintenance	0	1	0	Building shops and storage
TOTAL NSF			9,630	

Administration				
Space	NSF	Quantity	Total NSF	Notes
Reception	120	1	120	
Admitting	120	3	360	
Waiting	200	1	200	
Ambulance Entry	200	1	200	Monitored by Admitting
Exec Office	200	1	200	
Offices	150	4	600	
Clerical	600	1	600	
Staff Breakout Area	750	1	750	Lockers/Toilets/Lounge
Record Storage	200	1	200	
Conference Room	200	3	600	
Toilets	80	1	80	
Housekeeping	120	1	120	Residents
Social Services	400	1	400	
Security Room	200	1	200	
TOTAL NSF			4,630	

NSF: NET SQUARE FEET

NOTE: OUTDOOR SPACE IS NOT INCLUDED IN ANY OF THE SQUARE FOOTAGES PROVIDED

RECOMMENDED OUTDOOR SPACE:

BASKETBALL COURT

PICKLE BALL

WALKING/RUNNING TRAIL

COMMUNITY GARDEN/FARM

OUTDOOR FITNESS

RECREATIONAL/REFLECTION AREAS

OUTDOOR AMPHITHEATER AREA





THANK YOU!



togetherforbetter