

2024 GENERAL EARLY VOTE COMMISSION G

2/29/2024

Clark County, Nevada

**ELECTION
DEPARTMENT**



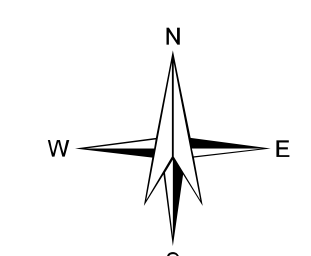
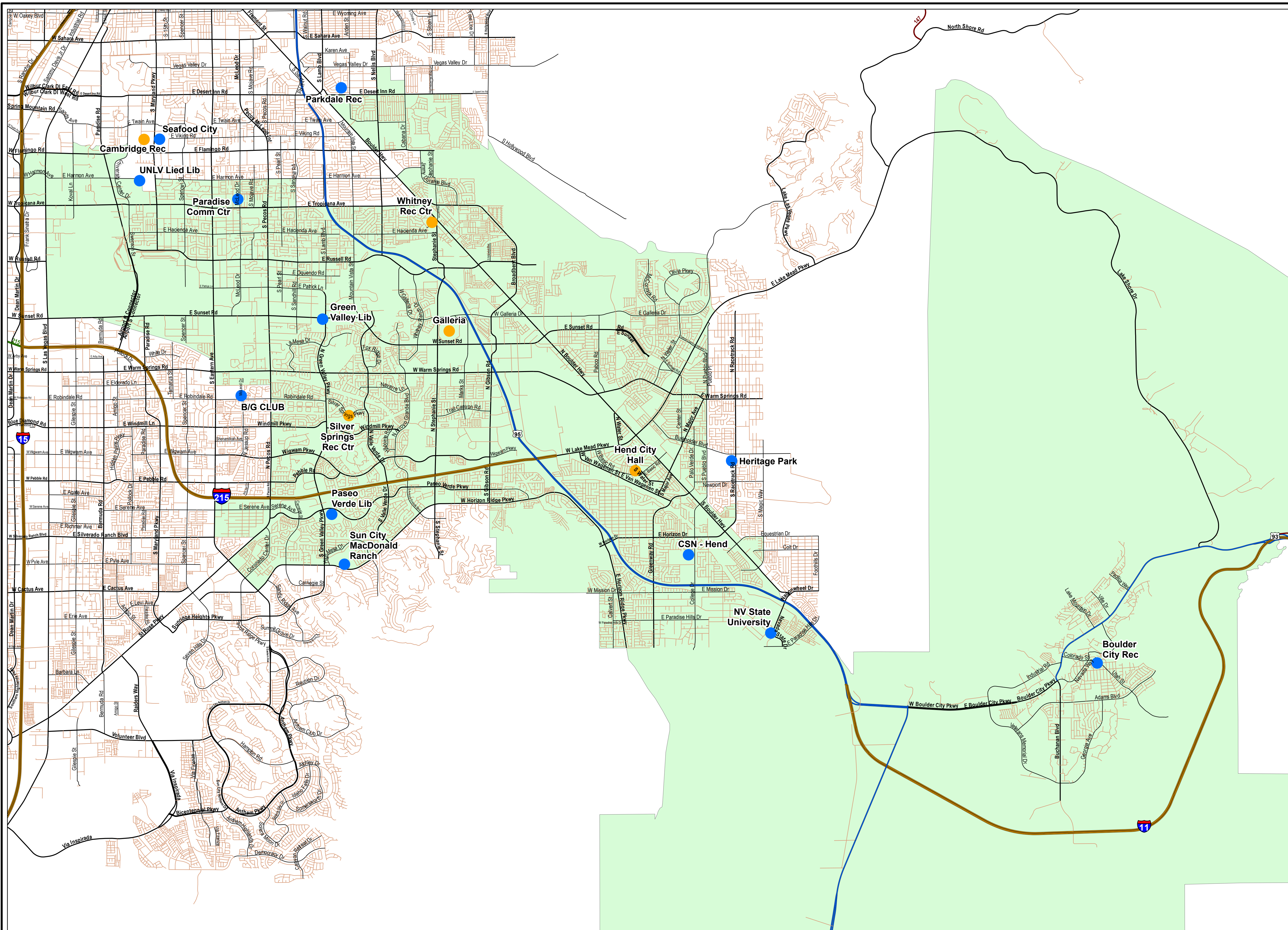
Legend

TEAM

- Long-term Early Voting Sites
- Mobile Early Voting Sites

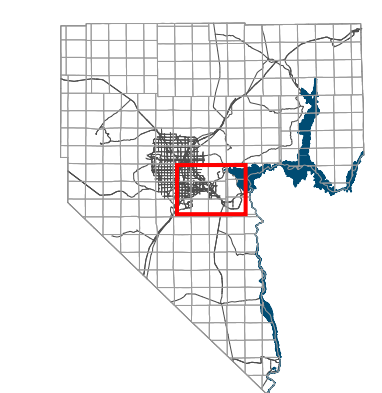
COMMISSION DISTRICTS

- G - Jim Gibson (212,020)



1 inch = 4,419 feet

Date: 3/9/2024



Clark County
Vicinity Map - No Scale

This information is for display purposes only. No liability is assumed as to the accuracy of the data delineated herein.