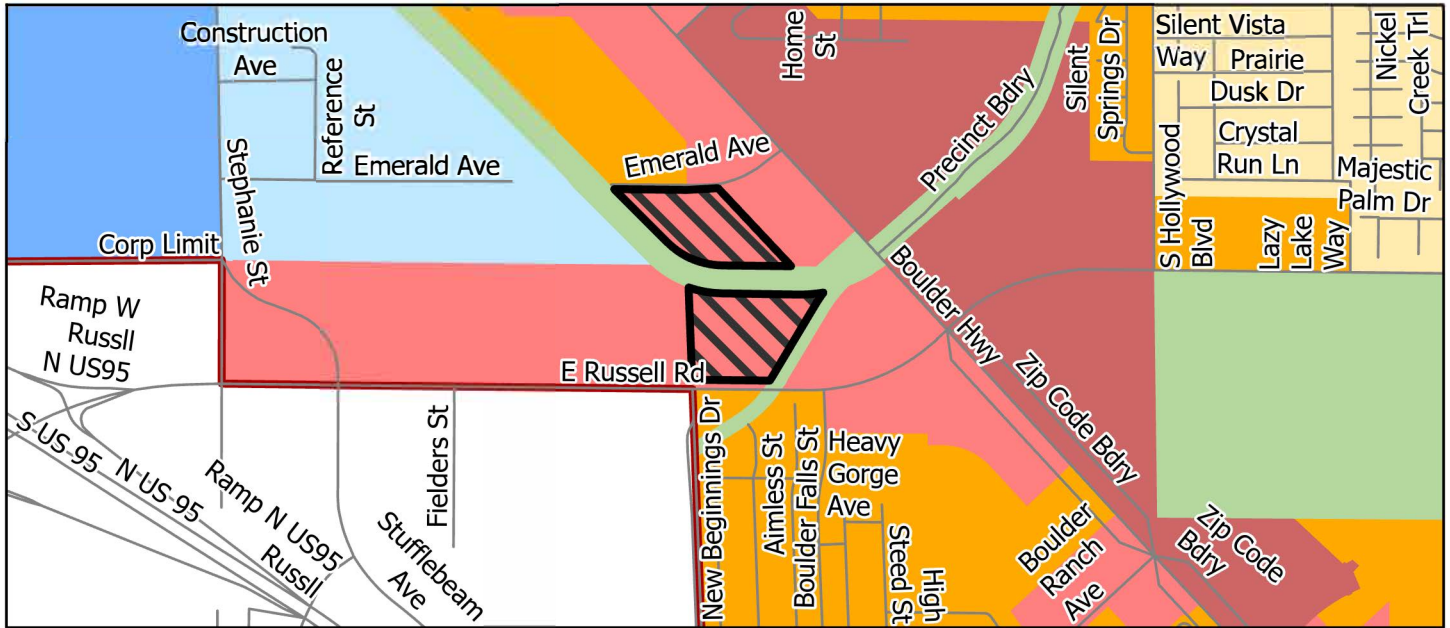
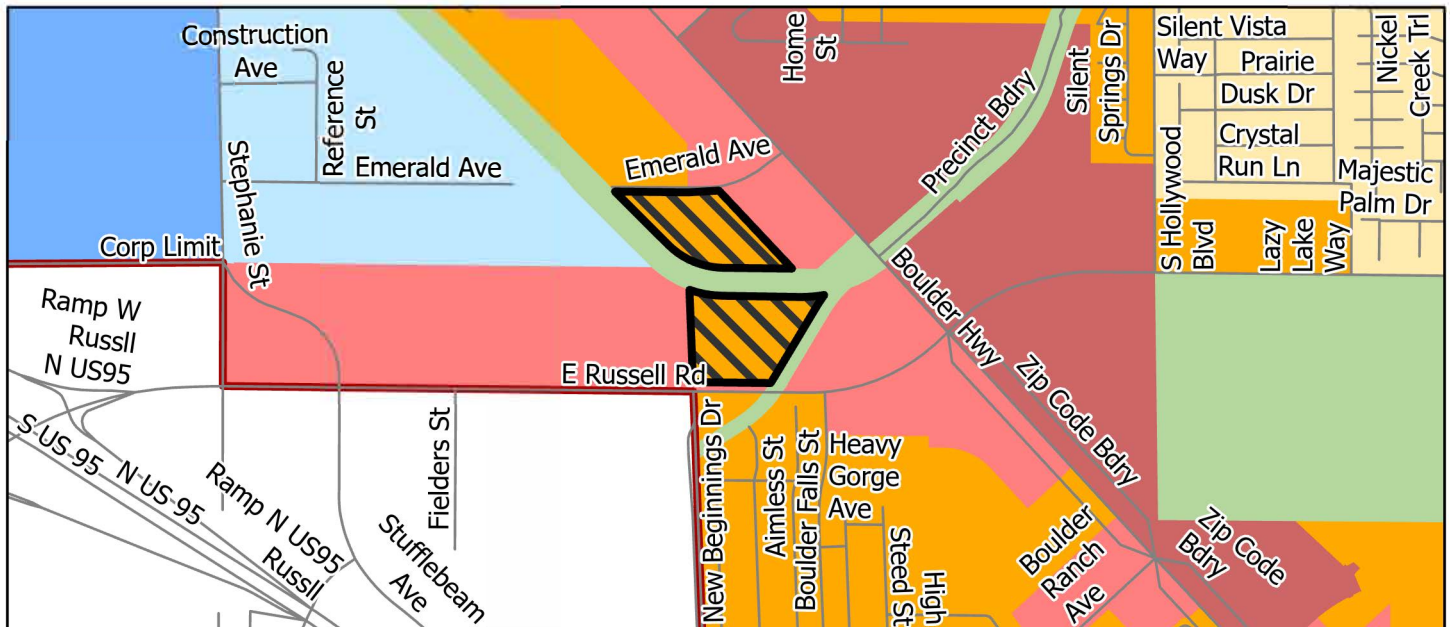


PAGE INTENTIONALLY LEFT BLANK

Planned Land Use Amendment PA-23-700005



Current



Requested

Neighborhoods

- Outlying Neighborhood (ON)
- Edge Neighborhood (EN)
- Ranch Estate Neighborhood (RN)
- Low-Intensity Suburban Neighborhood (LN)
- Mid-Intensity Suburban Neighborhood (MN)
- Compact Neighborhood (CN)
- Urban Neighborhood (UN)

Employment

- Business Employment (BE)
- Industrial Employment (IE)

Commercial and Mixed Use

- Neighborhood Commercial (NC)
- Corridor Mixed-Use (CM)
- Entertainment Mixed-Use (EM)

Other

- Agriculture (AG)
- Open Lands (OL)
- Public Use (PU)
- Major Projects (MP)

Requested Area To Change

Planning Areas

Whitney Clark County, Nevada

Note: Categories denoted in the legend may not apply to the presented area.

