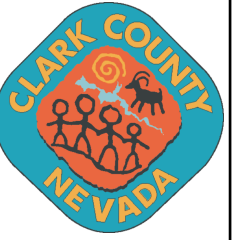


2024 PRIMARY ELECTION DAY COMMISSION B

2/26/2024

Clark County, Nevada

ELECTION DEPARTMENT

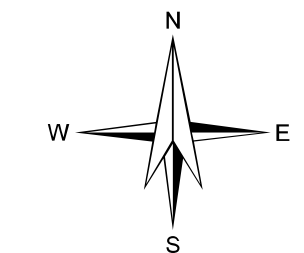


Legend

● Election Day Vote Centers

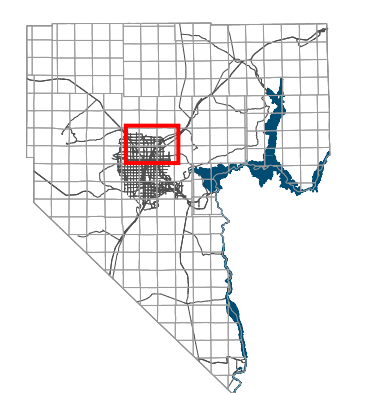
COMMISSION DISTRICTS

■ B Marilyn Kirkpatrick(209,757)



1 inch = 3,376 feet

Date: 3/10/2024



Clark County
Vicinity Map - No Scale

This information is for display purposes only. No liability is assumed as to the accuracy of the data delineated herein.

