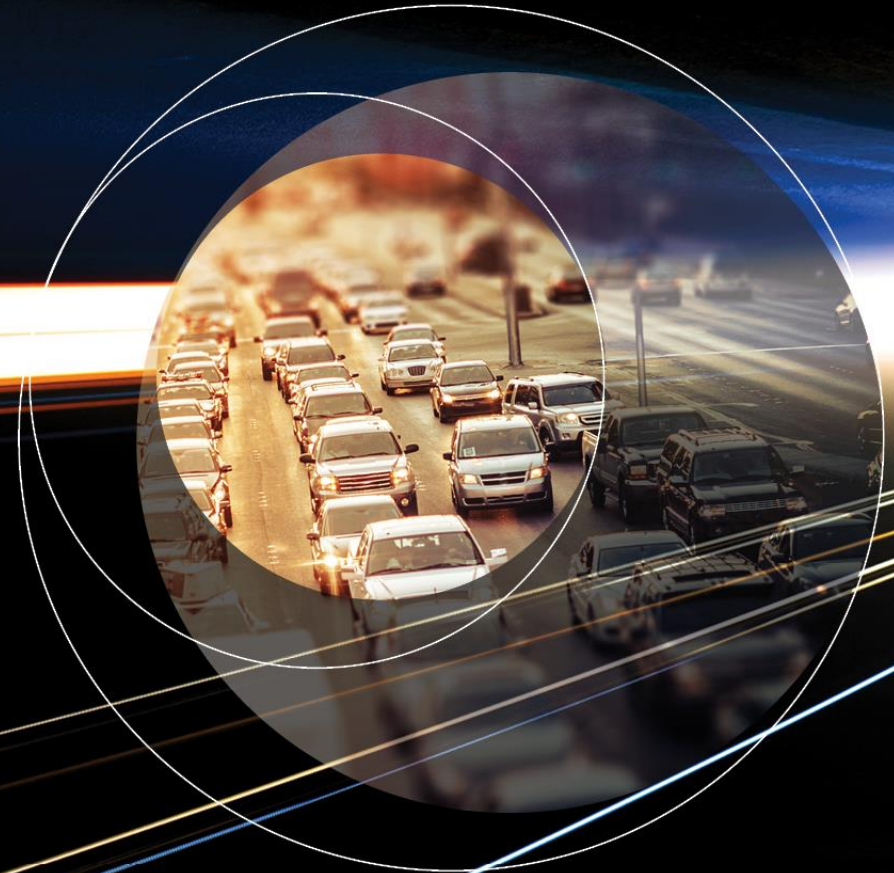


Tropicana & University Center Grade Separation


Board of County Commissioners Meeting | May 2, 2023

Presented by:

Department of Public Works



Purpose of this project:

- 
- Relieve congestion
 - Improve safety
 - Improve access for:
 - Airport traffic traveling to the Resort Corridor
 - Traffic traveling north via University Center Drive
 - Traffic traveling to airport via Paradise Road
 - Traffic traveling south via Paradise Road
 - Traffic traveling to/from Thomas & Mack and the University

Update

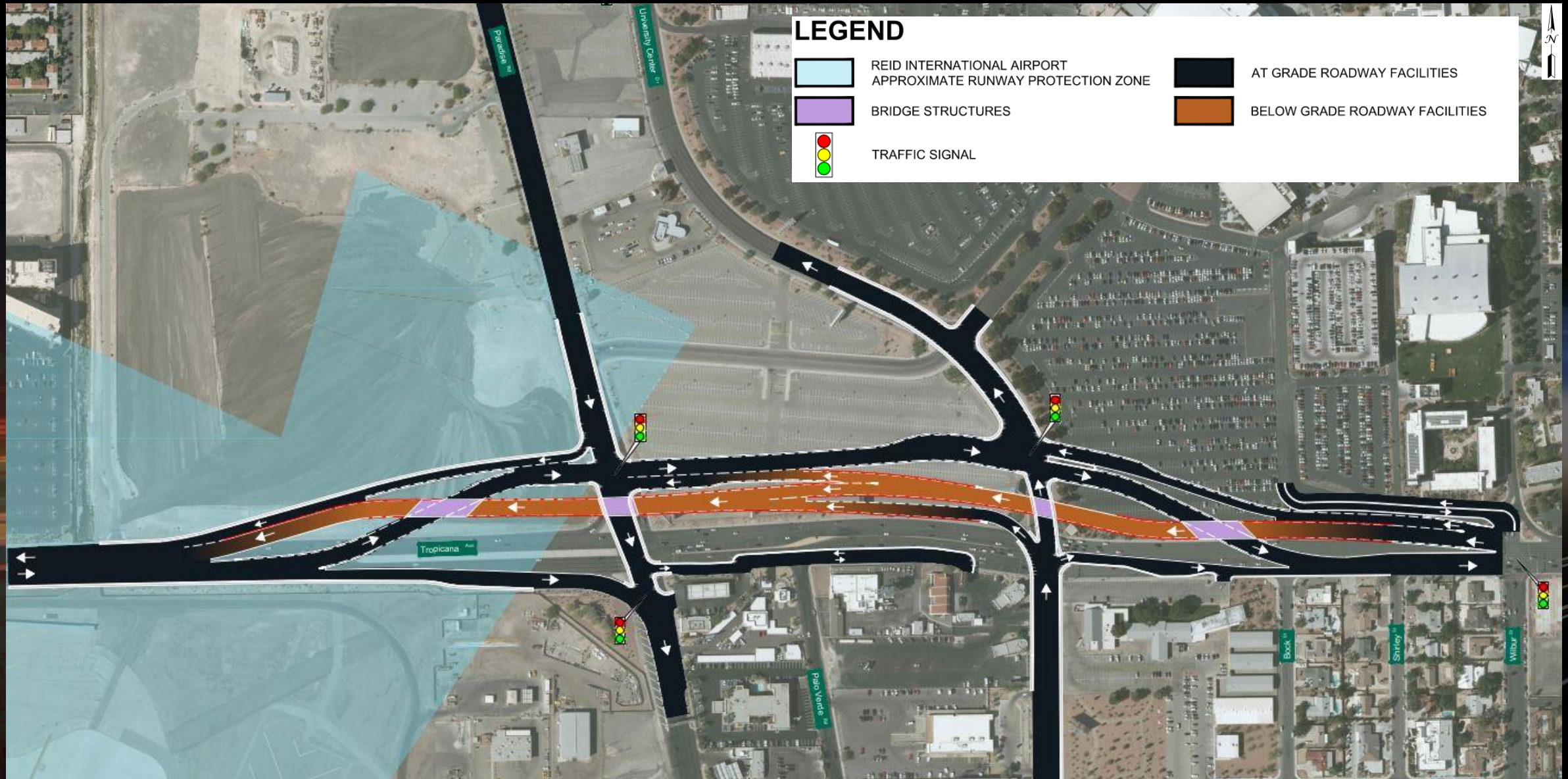


- July 7, 2020: Original Diverging Diamond Interchange (DDI) presented to the Board
- Jan 12, 2022: FAA approval of DDI Alternative
- Summer 2023: Phase 1 drainage construction to start
- Groundwater Permit submitted
- FAA Environmental Cat Ex being prepared in conjunction with DOA
- Ongoing coordination with UNLV, DOA, RTC & Utilities
- Recent construction cost escalations led us to create a revised alternative

LEGEND

- REID INTERNATIONAL AIRPORT APPROXIMATE RUNWAY PROTECTION ZONE
- BRIDGE STRUCTURES
- TRAFFIC SIGNAL
- AT GRADE ROADWAY FACILITIES
- BELOW GRADE ROADWAY FACILITIES

Revised DDI Alternative



Alternative Comparison

Alternatives	Estimated Cost
Original DDI Alternative	\$195,000,000
Revised DDI Alternative	\$115,000,000

Pros and Cons of the New Alternative

(in comparison with the Original DDI)

Pros	Cons
<ul style="list-style-type: none">• Lower cost	<ul style="list-style-type: none">• Less traffic operations benefits
<ul style="list-style-type: none">• Better transit access	<ul style="list-style-type: none">• Two additional traffic signals
<ul style="list-style-type: none">• Better pedestrian and bicycle accessibility	<ul style="list-style-type: none">• More points of conflict at intersections
<ul style="list-style-type: none">• Less construction impact in the airport RPZ	<ul style="list-style-type: none">• More at-grade roadway within the airport RPZ
<ul style="list-style-type: none">• Shorter construction duration	
<ul style="list-style-type: none">• Less below-grade roadway = less groundwater mitigation	